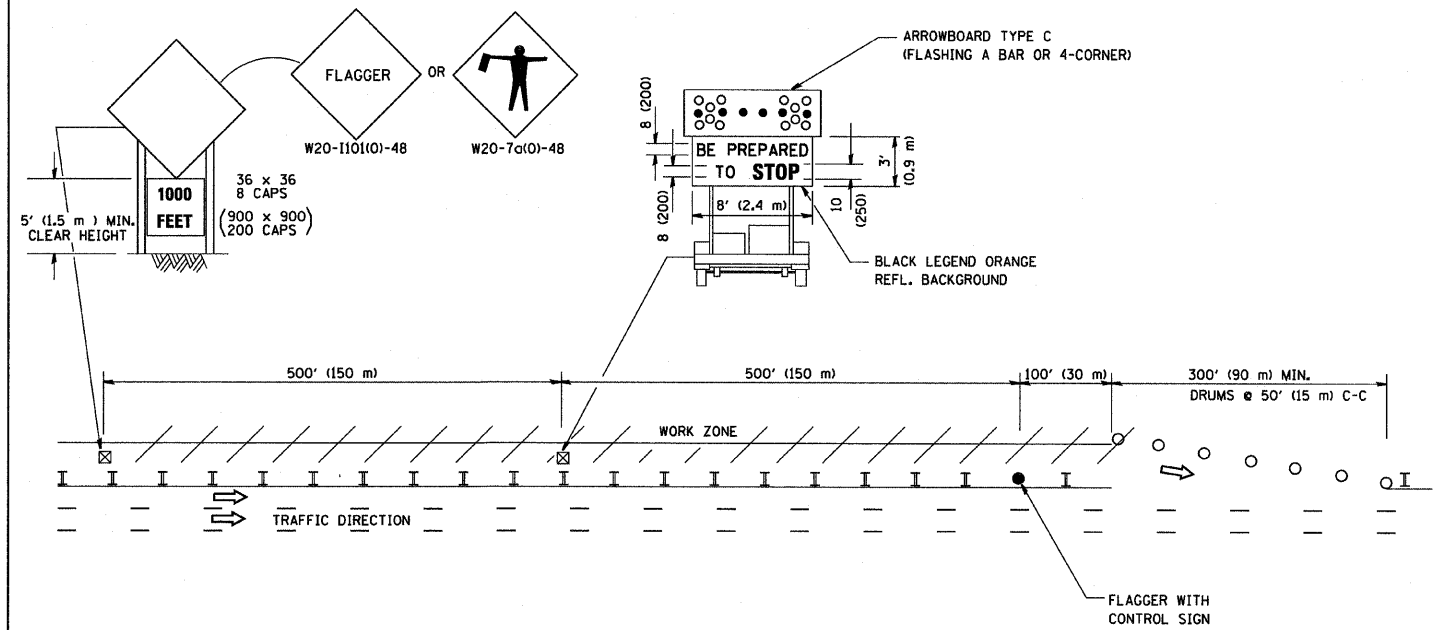
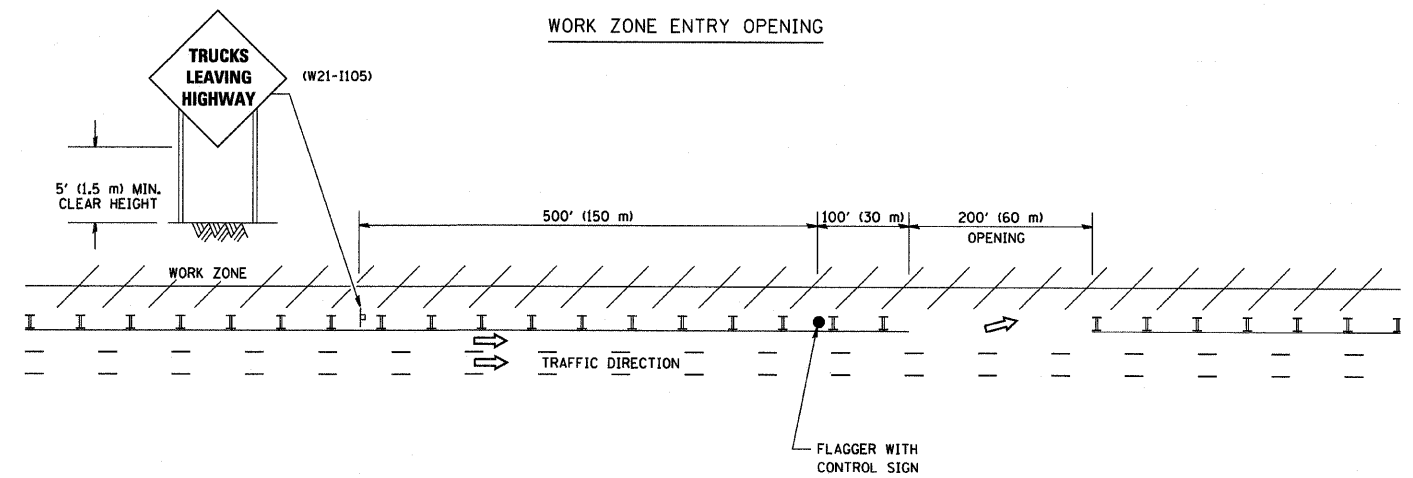


# SIGNING FOR FLAGGING OPERATIONS AT WORK ZONE OPENINGS

## WORK ZONE EXIT OPENING



## WORK ZONE ENTRY OPENING



### NOTES:

1. The Arrowboard, the Flagger Ahead trailer mounted sign, and the Trucks Leaving Highway sign shall be removed or turned away from traffic and the exit and entry openings shall be closed when the flagging operation ceases.
2. Work Zone Exit Openings should be a minimum of one half mile apart.
3. Exiting the work zone at any place other than at a Work Zone Exit Opening will be prohibited.
4. All vehicles shall enter the work zone at entry openings, using their turn signals to warn motorists

ALL DIMENSIONS ARE IN INCHES (MILLIMETERS) UNLESS OTHERWISE SHOWN

FILE NAME = M:\dststd\22x34\1e18.dgn	USER NAME = gaglienobt	DESIGNED -	REVISED - D.W.S. 08-98
		DRAWN -	REVISED - J.A.F. 04-03
	PLOT SCALE = 50.000 / IN.	CHECKED -	REVISED - J.A.F. 02-06
	PLOT DATE = 1/4/2008	DATE -	REVISED - S.P.B. 01-07

STATE OF ILLINOIS  
DEPARTMENT OF TRANSPORTATION

SIGNING FOR FLAGGING OPERATIONS  
AT WORK ZONE OPENINGS

F.A. RTE.	SECTION	COUNTY	TOTAL SHEETS	SHEET NO.
94	2005-036 I	COOK	45	49
TC-18			CONTRACT NO. 60A07	
FED. ROAD DIST. NO. 1 (ILLINOIS) FED. AID PROJECT				

SCALE: NONE SHEET NO. 1 OF 1 SHEETS STA. TO STA.