

F.A. RTE.	SECTION	COUNTY	TOTAL SHEETS	SHEET NO.
55	99 (1&2) I-11	WILL	176	1
			+ 1	
			177	

STATE OF ILLINOIS
DEPARTMENT OF TRANSPORTATION
DIVISION OF HIGHWAYS

**PROPOSED
HIGHWAY PLANS**

F.A.I. ROUTE 55 (INTERSTATE 55)
NOISE ABATEMENT WALLS
FROM BLACK ROAD TO U.S. ROUTE 30 (PLAINFIELD ROAD)

SECTION: 99 (1&2) I-11
PROJECT NO.: *IM - 055-6(234)253*

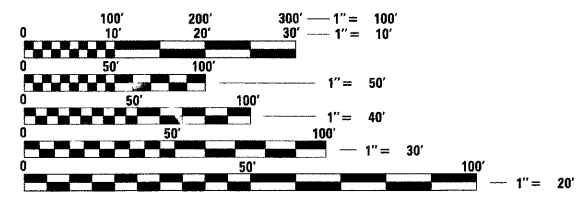
FOR INDEX OF SHEETS, SEE SHEET NO. 2

POSTED SPEED :

- FRONTAGE ROAD 3 (35 MPH)
- FRONTAGE ROAD 4 (NOT POSTED)
- FRONTAGE ROAD 5 (VARIES 30 TO 45 MPH)

MICROFILMED _____
REEL NUMBER _____
AWARDED _____
RESIDENT ENGINEER _____
AS BUILT CHANGES WERE MADE
ON THE FOLLOWING SHEETS _____

PROJECT LOCATED IN
THE CITY OF JOLIET AND
THE VILLAGE OF PLAINFIELD



FULL SIZE PLANS HAVE BEEN PREPARED USING STANDARD ENGINEERING SCALES. REDUCED SIZED PLANS WILL NOT CONFORM TO STANDARD SCALES. IN MAKING MEASUREMENTS ON REDUCED PLANS, THE ABOVE SCALES MAY BE USED.

J.U.L.I.E.
JOINT UTILITY LOCATION INFORMATION FOR EXCAVATION
1-800-892-0123

CONTRACT NO. 60B03

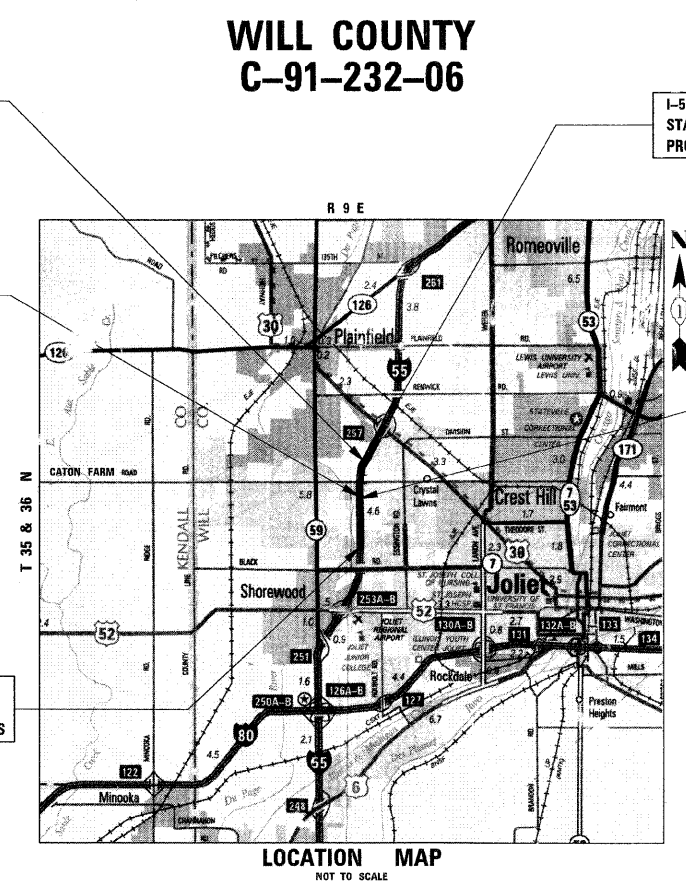
NOISE ABATEMENT WALL NO. 5
WEST FRONTAGE ROAD
CATON FARM ROAD TO US ROUTE 30
FRONTAGE ROAD 5: STA. 510 + 00.00 TO STA. 586 + 00.00
(I-55 MAINLINE: STA. 510 + 20.11 TO STA. 583 + 79.06)

NOISE ABATEMENT WALL NO. 4
WEST FRONTAGE ROAD
SUNNYLAND DRAIN TO CATON FARM ROAD
FRONTAGE ROAD 4: STA. 492 + 35.00 TO STA. 508 + 50.00
(I-55 MAINLINE: STA. 492 + 35.00 TO STA. 507 + 91.70)

I-55 MAINLINE
STA 583 + 79.06
PROJECT ENDS

NOISE ABATEMENT WALL NO. 3
EAST FRONTAGE ROAD
BLACK ROAD TO CATON FARM ROAD
FRONTAGE ROAD 3: STA. 324 + 70.00 TO STA. 408 + 00.00
(I-55 MAINLINE: STA. 424 + 70.00 TO STA. 507 + 68.61)

I-55 MAINLINE
STA 424 + 70.00
PROJECT BEGINS



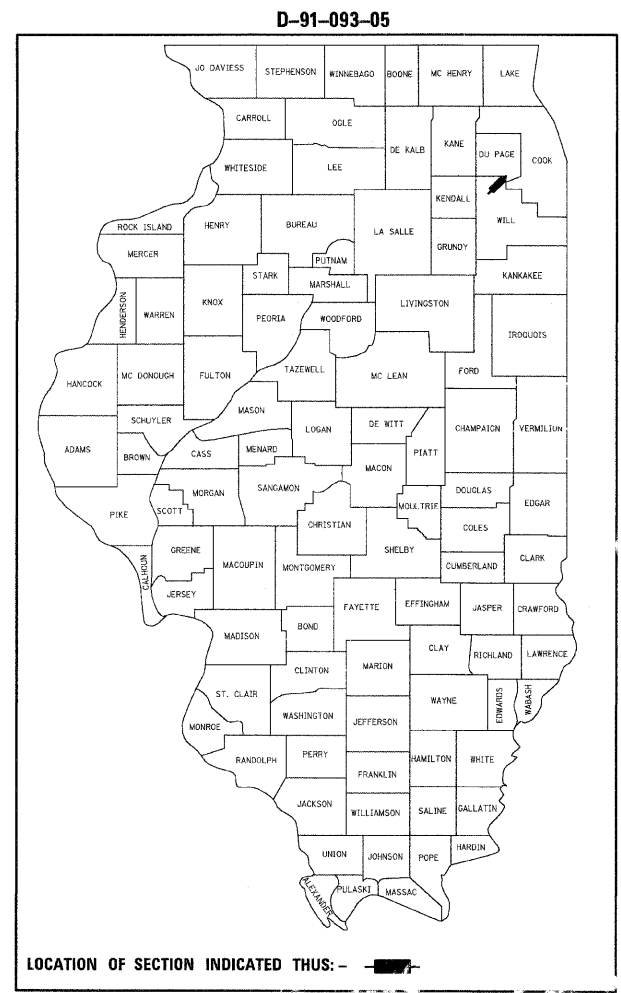
WILL COUNTY
C-91-232-06

I-55 GROSS LENGTH OF PROJECT = 15,909.06 feet (3.01 miles)
I-55 NET LENGTH OF PROJECT = 15,670.65 feet (2.97 miles)



DOUGLAS D. HANSEN, P.E.
IL. REG. NO. 062-045293
EXPIRES: 11/30/2009
DATE: 1/31/2009

TENG
TENG & ASSOCIATES, INC.
ENGINEERS/ARCHITECTS/PLANNERS
235 N. MICHIGAN AVE. CHICAGO, IL 60601



STATE OF ILLINOIS
DEPARTMENT OF TRANSPORTATION
DIVISION OF HIGHWAYS

SUBMITTED *FEBRUARY 2, 2009*

Diana M. O'Keefe
DEPUTY DIRECTOR OF HIGHWAYS, REGION 1 ENGINEER

March 27, 2009

Charles J. Ingersoll
ENGINEER OF DESIGN AND ENVIRONMENT

March 27, 2009

Christina M. Reed
DIRECTOR OF HIGHWAYS, CHIEF ENGINEER

PRINTED BY THE AUTHORITY
OF THE STATE OF ILLINOIS

DISTRICT 1 - DESIGN /CONSULTANT SERVICES
PROJECT MANAGER: RAJENDRA SHAH 847-705-4555