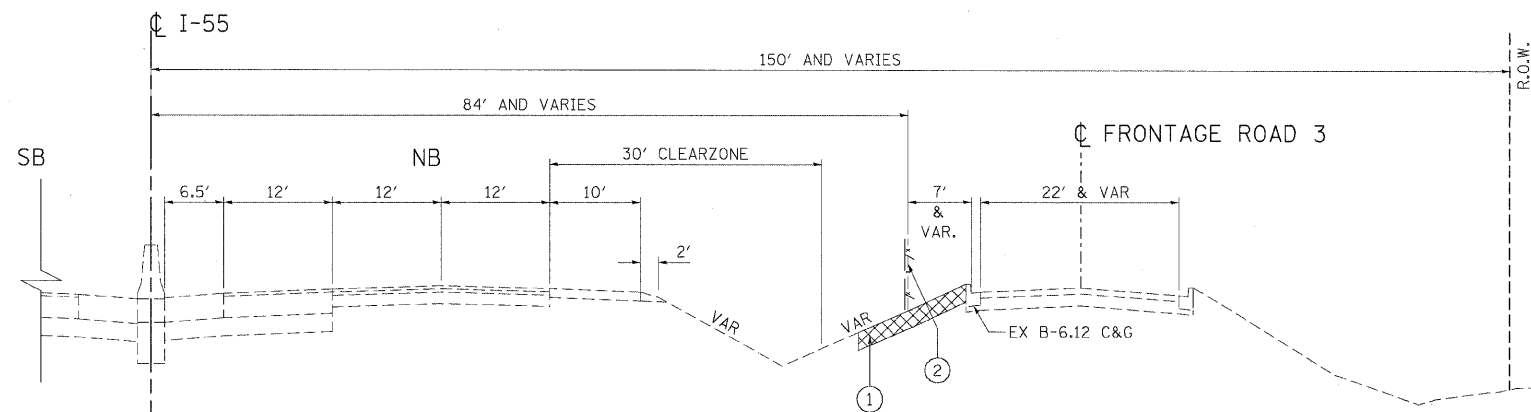
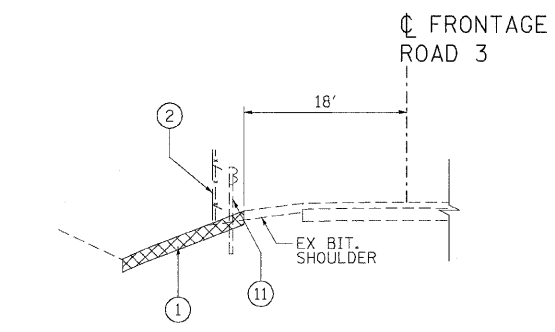


F.A.I. RTE.	SECTION	COUNTY	TOTAL SHEETS	SHEET NO.
55	99 (1&2) I-11	WILL	176	6
STA.		TO STA.		
FED. ROAD DIST. NO.		ILLINOIS FED. AID PROJECT		



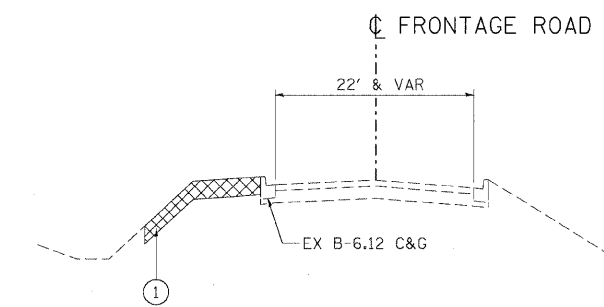
EXISTING ROADWAY TYPICAL SECTION

STA. 324+70.00 TO STA. 390+61.00  
STA. 393+27.41 TO STA. 406+00.00



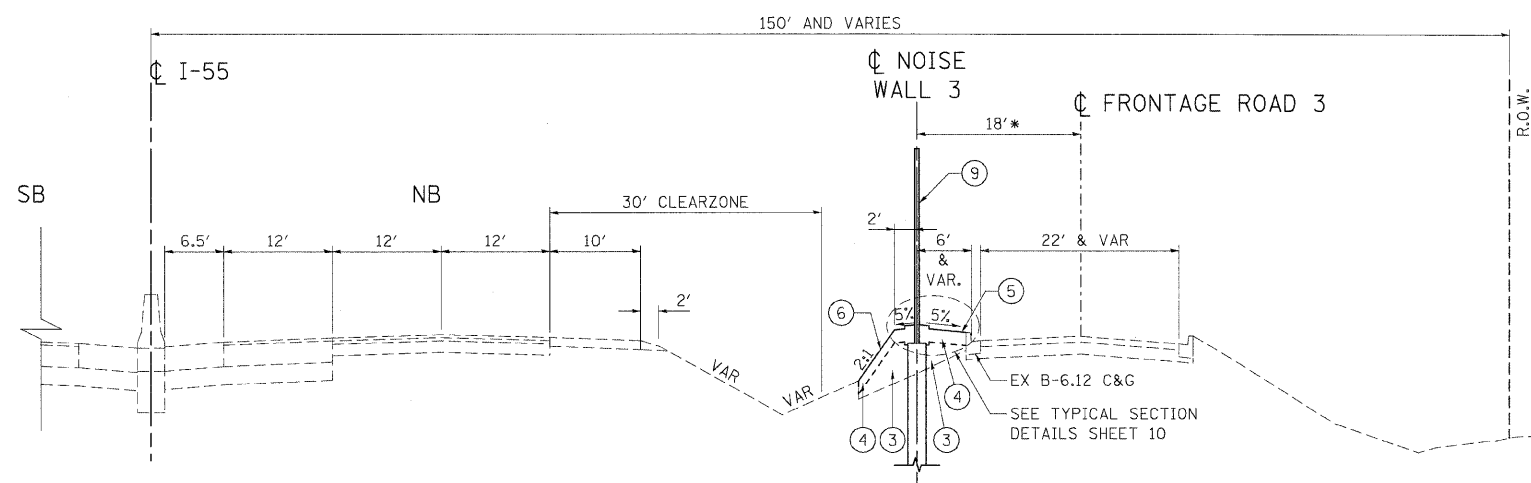
EXISTING ROADWAY TYPICAL SECTION

STA. 390+61.00 TO STA. 393+27.41



EXISTING ROADWAY TYPICAL SECTION

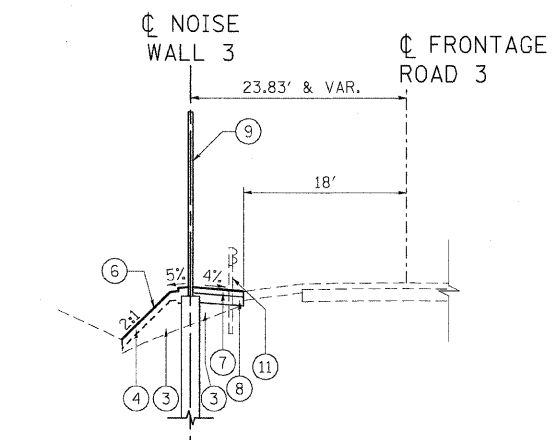
STA. 406+00.00 TO STA. 408+00.00



PROPOSED ROADWAY TYPICAL SECTION

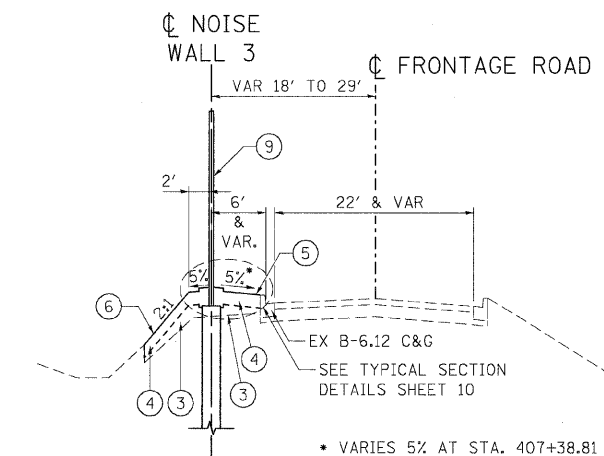
STA. 324+70.00 TO STA. 390+61.00  
STA. 393+27.41 TO STA. 406+00.00

- TRANSITIONS FROM 18' TO 23.83' FROM STA. 389+71.30 TO STA. 390+71.30
- TRANSITIONS FROM 23.83' TO 18' FROM STA. 393+08.58 TO STA. 394+08.58



PROPOSED ROADWAY TYPICAL SECTION

STA. 390+61.00 TO STA. 391+62.99  
STA. 392+16.49 TO STA. 393+27.41

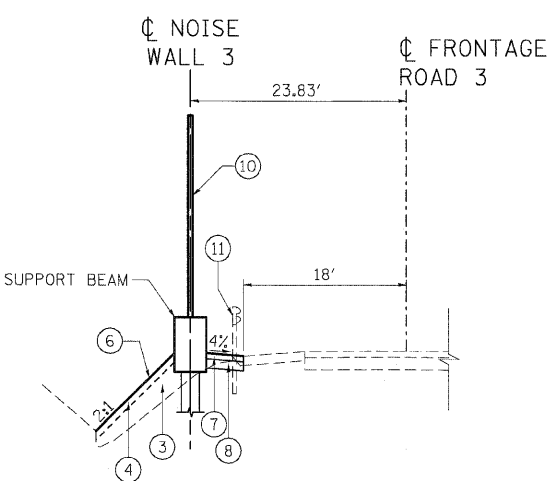


PROPOSED ROADWAY TYPICAL SECTION

STA. 406+00.00 TO STA. 408+00.00

NOTES:

- DIMENSIONS ON TYPICAL SECTIONS ARE SHOWN TO CENTERLINE OF NOISE ABATEMENT WALL.
- HMA SHOULDERS 3-3/4" SHALL CONSIST OF THE FOLLOWING:  
HMA SURFACE COURSE, MIX "C", N50 (1-1/2")  
HMA BINDER COURSE, IL-19.0, N50 (2-1/4")



PROPOSED ROADWAY TYPICAL SECTION

STA. 391+62.99 TO STA. 391+78.63  
STA. 392+00.93 TO STA. 392+16.49

- STA. 391+78.63 TO STA. 392+00.93 IS WITHIN THE BRIDGE OVER SUNNYLAND DRAIN - SEE STRUCTURAL SHEET >GP7PG FOR DETAILS

LEGEND

- |   |  |
|---|--|
| ① REMOVAL AND DISPOSAL OF UNSUITABLE MATERIAL   | ⑧ SUB-BASE GRANULAR MATERIAL, TYPE B 6"        |
| ② FENCE REMOVAL (SEE ROADWAY PLANS FOR TYPE)    | ⑨ NOISE ABATEMENT WALL, GROUND MOUNTED         |
| ③ FURNISHED EXCAVATION                          | ⑩ NOISE ABATEMENT WALL, STRUCTURE MOUNTED      |
| ④ TOPSOIL FURNISH AND PLACE, 6"                 | ⑪ REMOVE AND RE-ERECT TRAFFIC BARRIER TERMINAL |
| ⑤ SEEDING, CLASS 2A AND EROSION CONTROL BLANKET |  |
| ⑥ SEEDING, CLASS 4 AND EROSION CONTROL BLANKET  |  |
| ⑦ HOT-MIX ASPHALT SHOULDERS, 3-3/4"             |  |

REVISIONS	
NAME	DATE

ILLINOIS DEPARTMENT OF TRANSPORTATION  
FAI ROUTE 55 (BLACK ROAD TO U.S. ROUTE 30)  
NOISE ABATEMENT WALLS

**TYPICAL SECTIONS  
NOISE WALL 3 - EAST  
STA. 324+70.00 TO STA. 408+00.00**

SCALE: N.T.S. DRAWN BY SKJ  
DATE 02/06/09 CHECKED BY DDH

**TENG**  
TENG & ASSOCIATES, INC.  
ENGINEERS/ARCHITECTS/PLANNERS  
CHICAGO, ILLINOIS

PLOT DATE: 02/06/09  
 FILE NAME: I:\PROJECTS\60B03\DRAWINGS\NOISE WALL 3 - EAST\NOISE WALL 3 - EAST.TIF  
 USER: JG  
 DATE: 02/06/09  
 TIME: 12:24:24  
 USER: JG