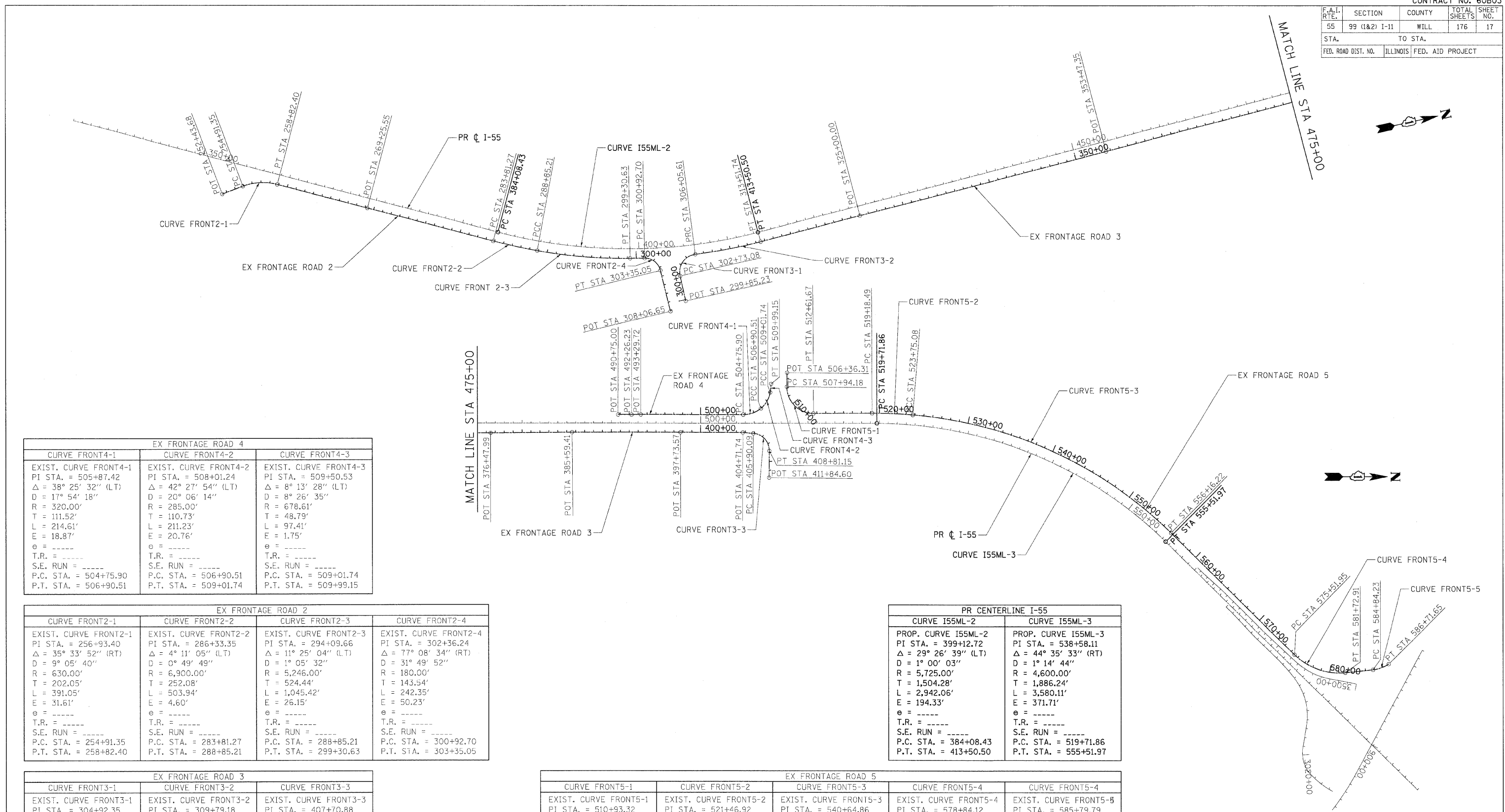


F.A.I. RTE.	SECTION	COUNTY	TOTAL SHEETS	SHEET NO.
55	99 (I&2) I-II	WILL	176	17
STA.		TO STA.		
FED. ROAD DIST. NO.		ILLINOIS FED. AID PROJECT		



EX FRONTAGE ROAD 4		
CURVE FRONT4-1	CURVE FRONT4-2	CURVE FRONT4-3
EXIST. CURVE FRONT4-1 PI STA. = 505+87.42 Δ = 38° 25' 32" (LT) D = 17° 54' 18" R = 320.00' T = 111.52' L = 214.61' E = 18.87' e = ----- T.R. = ----- S.E. RUN = ----- P.C. STA. = 504+75.90 P.T. STA. = 506+90.51	EXIST. CURVE FRONT4-2 PI STA. = 508+01.24 Δ = 42° 27' 54" (LT) D = 20° 06' 14" R = 285.00' T = 110.73' L = 211.23' E = 20.76' e = ----- T.R. = ----- S.E. RUN = ----- P.C. STA. = 506+90.51 P.T. STA. = 509+01.74	EXIST. CURVE FRONT4-3 PI STA. = 509+50.53 Δ = 8° 13' 28" (LT) D = 8° 26' 35" R = 678.61' T = 48.79' L = 97.41' E = 1.75' e = ----- T.R. = ----- S.E. RUN = ----- P.C. STA. = 509+01.74 P.T. STA. = 509+99.15

EX FRONTAGE ROAD 2			
CURVE FRONT2-1	CURVE FRONT2-2	CURVE FRONT2-3	CURVE FRONT2-4
EXIST. CURVE FRONT2-1 PI STA. = 256+93.40 Δ = 35° 33' 52" (RT) D = 9° 05' 40" R = 630.00' T = 202.05' L = 391.05' E = 31.61' e = ----- T.R. = ----- S.E. RUN = ----- P.C. STA. = 254+91.35 P.T. STA. = 258+82.40	EXIST. CURVE FRONT2-2 PI STA. = 286+33.35 Δ = 4° 11' 05" (LT) D = 0° 49' 49" R = 6,900.00' T = 252.08' L = 503.94' E = 4.60' e = ----- T.R. = ----- S.E. RUN = ----- P.C. STA. = 283+81.27 P.T. STA. = 288+85.21	EXIST. CURVE FRONT2-3 PI STA. = 294+09.66 Δ = 11° 25' 04" (LT) D = 1° 05' 32" R = 5,246.00' T = 524.44' L = 1,045.42' E = 26.15' e = ----- T.R. = ----- S.E. RUN = ----- P.C. STA. = 288+85.21 P.T. STA. = 299+30.63	EXIST. CURVE FRONT2-4 PI STA. = 302+36.24 Δ = 77° 08' 34" (RT) D = 31° 49' 52" R = 180.00' T = 143.54' L = 242.35' E = 50.23' e = ----- T.R. = ----- S.E. RUN = ----- P.C. STA. = 300+92.70 P.T. STA. = 303+35.05

EX FRONTAGE ROAD 3		
CURVE FRONT3-1	CURVE FRONT3-2	CURVE FRONT3-3
EXIST. CURVE FRONT3-1 PI STA. = 304+92.35 Δ = 95° 15' 45" (RT) D = 28° 38' 52" R = 200.00' T = 219.27' L = 332.53' E = 96.78' e = ----- T.R. = ----- S.E. RUN = ----- P.C. STA. = 302+73.08 P.T. STA. = 306+05.61	EXIST. CURVE FRONT3-2 PI STA. = 309+79.18 Δ = 7° 19' 35" (LT) D = 0° 58' 55" R = 5,835.00' T = 373.57' L = 746.12' E = 11.95' e = ----- T.R. = ----- S.E. RUN = ----- P.C. STA. = 306+05.61 P.T. STA. = 313+51.74	EXIST. CURVE FRONT3-3 PI STA. = 407+70.88 Δ = 85° 57' 50" (RT) D = 29° 32' 02" R = 194.00' T = 180.79' L = 291.07' E = 71.18' e = ----- T.R. = ----- S.E. RUN = ----- P.C. STA. = 405+90.09 P.T. STA. = 408+81.15

PR CENTERLINE I-55	
CURVE I55ML-2	CURVE I55ML-3
PROP. CURVE I55ML-2 PI STA. = 399+12.72 Δ = 29° 26' 39" (LT) D = 1° 00' 03" R = 5,725.00' T = 1,504.28' L = 2,942.06' E = 194.33' e = ----- T.R. = ----- S.E. RUN = ----- P.C. STA. = 384+08.43 P.T. STA. = 413+50.50	PROP. CURVE I55ML-3 PI STA. = 538+58.11 Δ = 44° 35' 33" (RT) D = 1° 14' 44" R = 4,600.00' T = 1,886.24' L = 3,580.11' E = 371.71' e = ----- T.R. = ----- S.E. RUN = ----- P.C. STA. = 519+71.86 P.T. STA. = 555+51.97

EX FRONTAGE ROAD 5				
CURVE FRONT5-1	CURVE FRONT5-2	CURVE FRONT5-3	CURVE FRONT5-4	CURVE FRONT5-5
EXIST. CURVE FRONT5-1 PI STA. = 510+93.32 Δ = 90° 47' 52" (LT) D = 19° 25' 20" R = 295.00' T = 299.14' L = 467.49' E = 125.13' e = ----- T.R. = ----- S.E. RUN = ----- P.C. STA. = 507+94.18 P.T. STA. = 512+61.67	EXIST. CURVE FRONT5-2 PI STA. = 521+46.92 Δ = 4° 52' 01" (RT) D = 1° 03' 57" R = 5,375.00' T = 228.43' L = 456.59' E = 4.85' e = ----- T.R. = ----- S.E. RUN = ----- P.C. STA. = 519+18.49 P.T. STA. = 523+75.08	EXIST. CURVE FRONT5-3 PI STA. = 540+64.86 Δ = 40° 00' 18" (RT) D = 1° 14' 03" R = 4,642.00' T = 1,689.79' L = 3,241.14' E = 297.99' e = ----- T.R. = ----- S.E. RUN = ----- P.C. STA. = 523+75.08 P.T. STA. = 556+16.22	EXIST. CURVE FRONT5-4 PI STA. = 578+84.12 Δ = 50° 23' 38" (LT) D = 8° 06' 56" R = 706.00' T = 332.17' L = 620.96' E = 74.24' e = ----- T.R. = ----- S.E. RUN = ----- P.C. STA. = 575+51.95 P.T. STA. = 581+72.91	EXIST. CURVE FRONT5-5 PI STA. = 585+79.79 Δ = 27° 32' 02" (LT) D = 14° 41' 28" R = 390.00' T = 95.55' L = 187.42' E = 11.54' e = ----- T.R. = ----- S.E. RUN = ----- P.C. STA. = 584+84.23 P.T. STA. = 586+71.65

REVISIONS	
NAME	DATE

ILLINOIS DEPARTMENT OF TRANSPORTATION
 FAI ROUTE 55 (BLACK ROAD TO U.S. ROUTE 30)
 NOISE ABATEMENT WALLS

ALIGNMENT, TIES AND BENCHMARKS
 I

SCALE: 1"=500'
 DATE 02/06/09
 DRAWN BY SKJ
 CHECKED BY DDH

TENG
 TENG & ASSOCIATES, INC.
 ENGINEERS/ARCHITECTS/PLANNERS
 CHICAGO, ILLINOIS

PLOT DATE = 02/06/09
 FILE NAME = 020609_01.DWG
 PLOT SCALE = 1"=500'
 USER NAME = JGIBSON