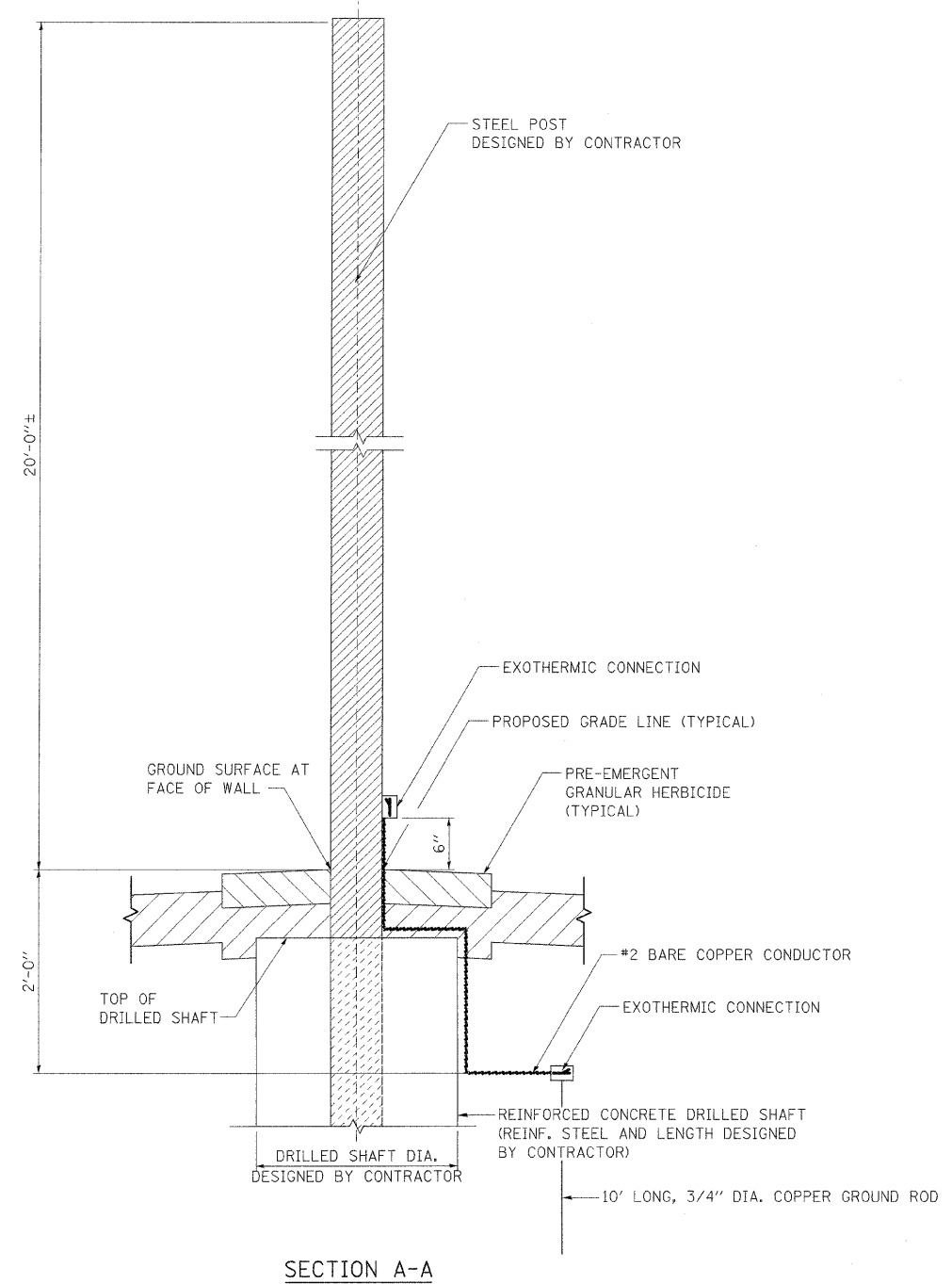
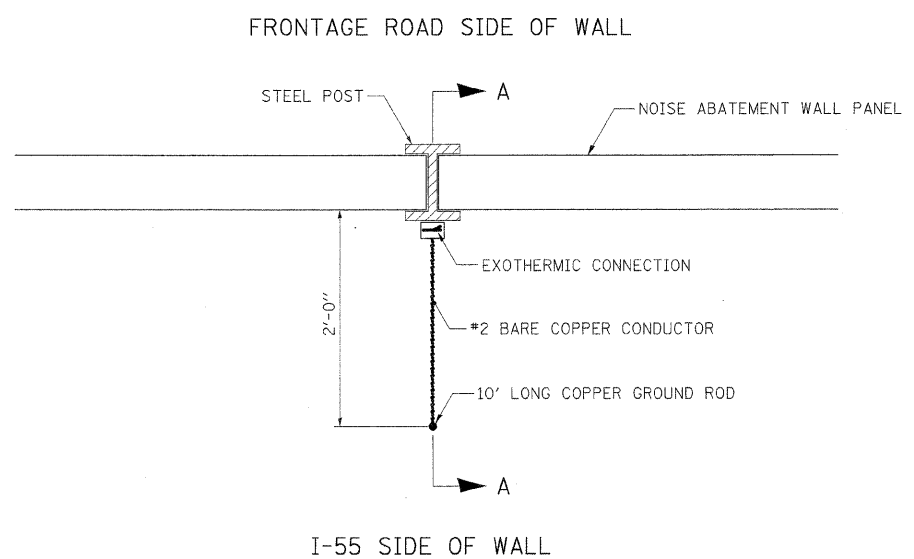


F.A.I. RTE.	SECTION	COUNTY	TOTAL SHEETS	SHEET NO.
55	99 (1&2) I-11	WILL	176	41A
STA.		TO STA.		
FED. ROAD DIST. NO.	ILLINOIS	FED. AID PROJECT		



SECTION A-A



PLAN SECTION AT SOUND WALL (LOOKING DOWN)

TYPICAL SOUND WALL GROUNDING
 PROVIDE AT EACH POST WITHIN COMED PROPERTY
 OR WITHIN 30' OF OVERHEAD TRANSMISSION WIRES

REVISIONS	
NAME	DATE

ILLINOIS DEPARTMENT OF TRANSPORTATION
 FAI ROUTE 55 (BLACK ROAD TO U.S. ROUTE 30)
 NOISE ABATEMENT WALLS

**NOISE ABATEMENT WALL,
 GROUND MOUNTED
 GROUNDING DETAILS FOR STEEL POSTS**

SCALE: N.T.S. DRAWN BY: JFS
 DATE: 06/11/09 CHECKED BY: DDH

TENG
 TENG & ASSOCIATES, INC.
 ENGINEERS/ARCHITECTS/PLANNERS
 CHICAGO, ILLINOIS

PLOT DATE = #DATE#
 FILE NAME = #FILE#
 PLOT SCALE = #SCALE#
 USER NAME = #USER#
 S:\DOCUMENT\60261521\CIVIL\CON\LD1214601.SHT
 6-11-2009, 11:27:45
 14955000