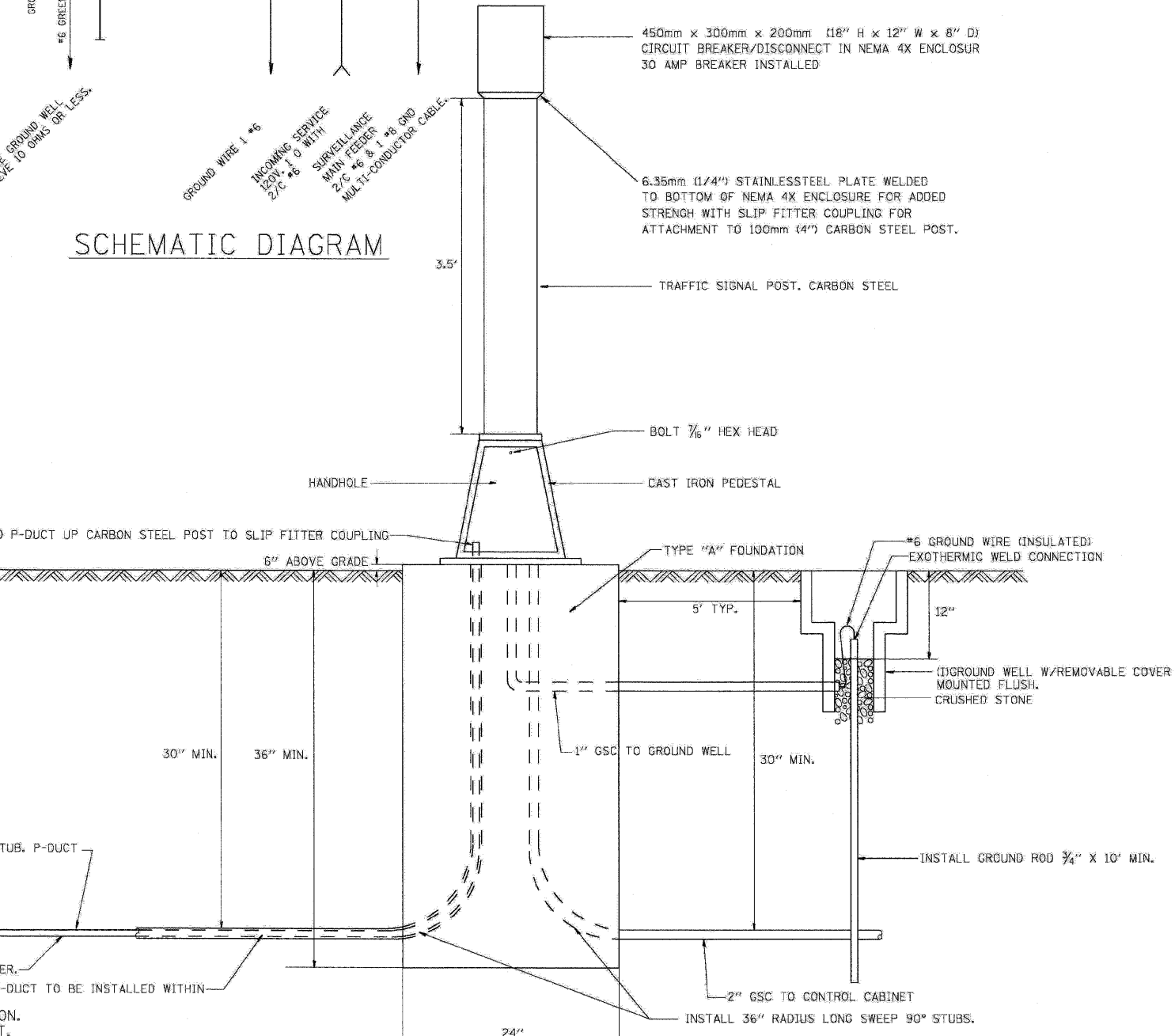
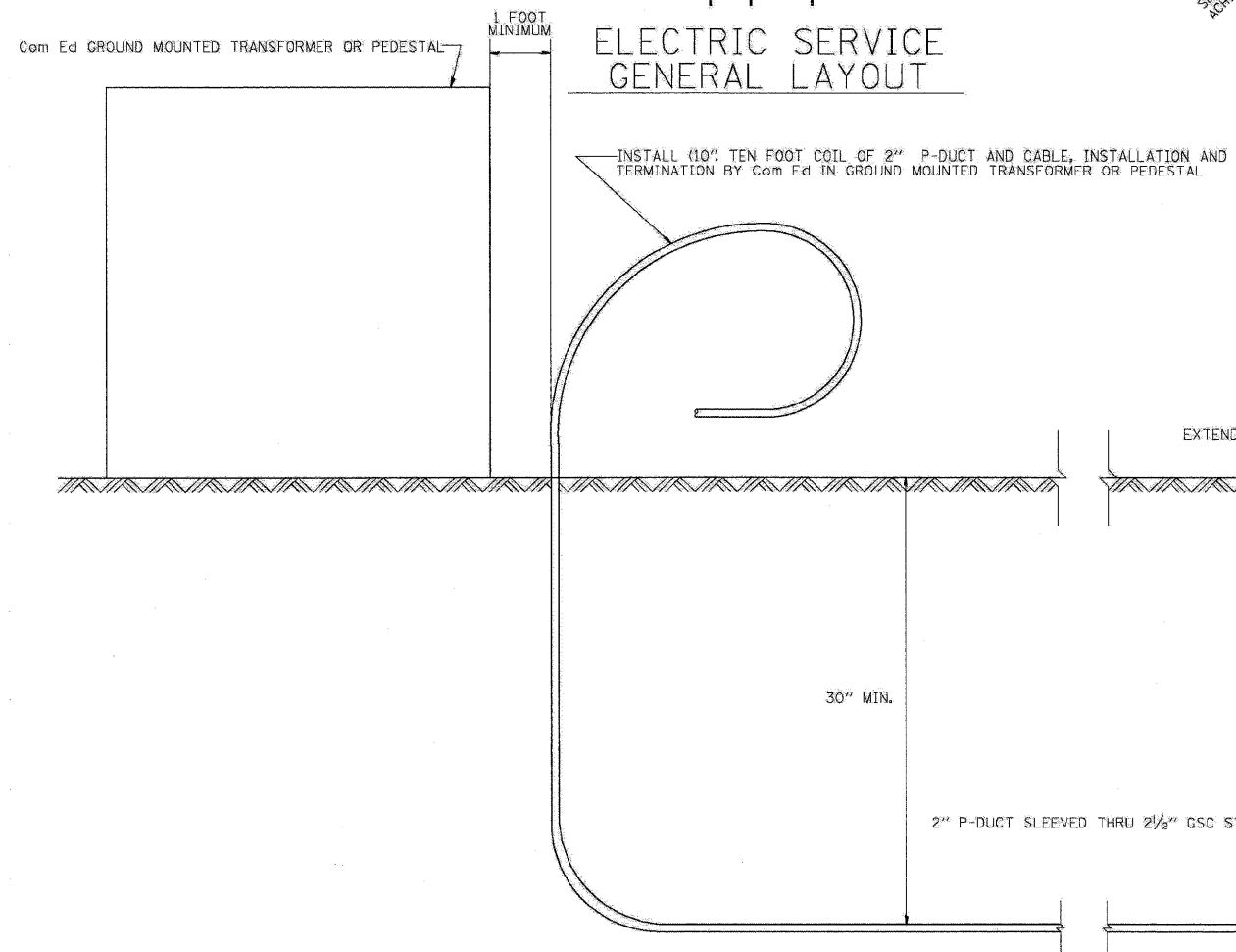
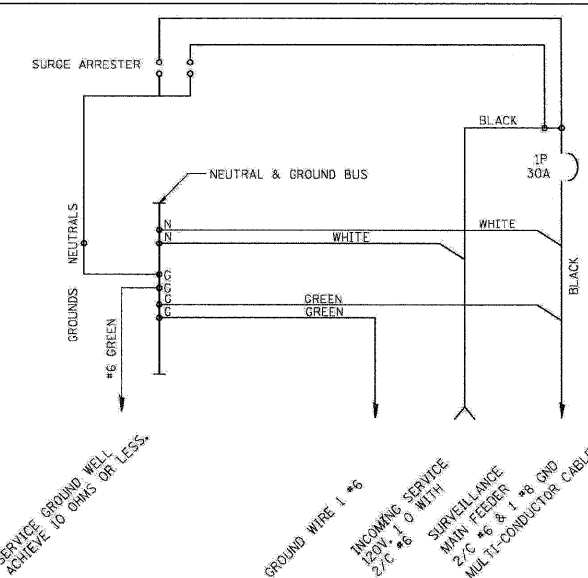
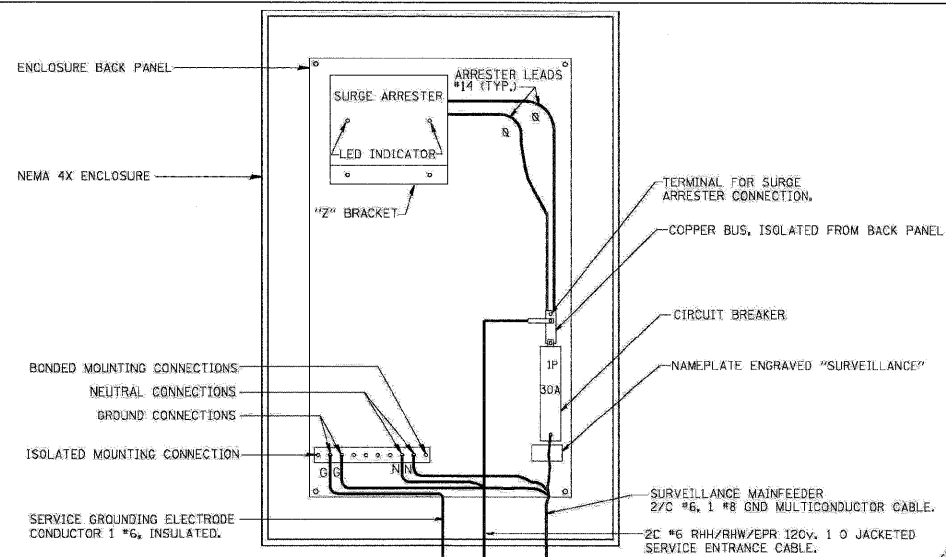


F.A.I. R.T.E.	SECTION	COUNTY	TOTAL SHEETS	SHEET NO.
55	99 (1&2) I-11	WILL	176	90
STA.		TO STA.		
FED. ROAD DIST. NO.		ILLINOIS FED. AID PROJECT		



NOTES:

- BOND ALL GSC CONDUIT STUBS.
- ANCHOR BOLTS, GROUND RODS & GSC STUBS SHALL BE CONSIDERED INCIDENTAL TO COST OF TYPE "A" FOUNDATION.
- THE ELECTRIC SERVICE EQUIPMENT ASSEMBLY SHALL BE UL LABELLED, SUITABLE FOR USE AS SERVICE EQUIPMENT.
- CIRCUIT BREAKERS SHALL BE THERMAL MAGNETIC BOLT-ON TYPE WITH A MINIMUM INTERRUPTING CAPACITY OF 25,000 SYMMETRICAL AMPERES AT 240 VOLTS. THEY SHALL BE LOCKABLE IN THE "OFF" POSITION FOR COMPLIANCE WITH OSHA LOCK-OUT/TAG-OUT REQUIREMENTS. HANDLES SHALL BE TRIP FREE.
- THE SURGE PROTECTOR SHALL BE SUITABLE FOR 240/120 VOLT SINGLE PHASE 60HZ AC ELECTRICAL SERVICE, WITH A SURGE ENERGY CAPABILITY OF 2160 JOULES OR BETTER AT 8/20 MICROSECONDS, RATED -40 TO 65 DEGREES C., WITH LED OPERATING INDICATORS, AND SHALL BE UL LISTED PER UL 1449, JOSLYN SURGETRON III MODEL 126521 OR APPROVED EQUAL. FOLLOW MANUFACTURERS RECOMMENDED WIRING INSTALLATION INSTRUCTIONS.
- BUS BARS, CONNECTORS AND LUGS SHALL BE COPPER, INSULATED AND ISOLATED AND CONFIGURED TO PREVENT SHORTED CONDITIONS FROM TIGHTENING TERMINATIONS, ETC. THE OVERALL BUS SECTION SHALL BE CONFIGURED BEHIND AN INSULATING BARRIER SHIELD WHICH IS REMOVABLE FOR ACCESS TO CONNECTIONS.
- THE COMBINATION GROUND AND NEUTRAL BAR SHALL BE CONFIGURED WITH SEPARATE GROUND AND NEUTRAL SECTIONS AND SPARE TERMINALS AS INDICATED. THE HEADS OF GROUND SCREWS SHALL BE PAINTED GREEN, THE HEADS OF NEUTRAL SCREWS SHALL BE PAINTED WHITE.
- A PLASTIC LAMINATED LAYOUT AND CIRCUIT DIAGRAM SHALL BE AFFIXED TO THE INTERIOR SIDE OF THE ENCLOSURE DOOR.
- A 2-COLOR ENGRAVED PLASTIC NAMEPLATE, ATTACHED WITH SCREWS, AND ENGRAVED AS INDICATED, SHALL BE PROVIDED FOR EACH MAIN BREAKER.
- PROVIDE ON LAYOUT AND CIRCUIT DIAGRAM A BILL OF MATERIALS USED WITH CATALOG NUMBERS.

REVISIONS	
NAME	DATE

ILLINOIS DEPARTMENT OF TRANSPORTATION
 FAI ROUTE 55 (BLACK ROAD TO U.S. ROUTE 30)
 NOISE ABATEMENT WALLS

TYPICAL E-SERVICE INSTALLATION

SCALE: NTS
 DATE: 02/06/09

DRAWN BY
 CHECKED BY

TENG
 TENG & ASSOCIATES, INC.
 ENGINEERS/ARCHITECTS/PLANNERS
 CHICAGO, ILLINOIS

PLOT DATE = 02/06/09
 FILE NAME = #FILE#
 PLOT SCALE = #SCALE#
 USER NAME = #USER#
 \\S01PPIA01\BUDEN
 2-03-2009\1755402
 GARCIARAZ
 S:\DOCUMENT\022361581\CTVIL\CON\ID12\A001.SHT