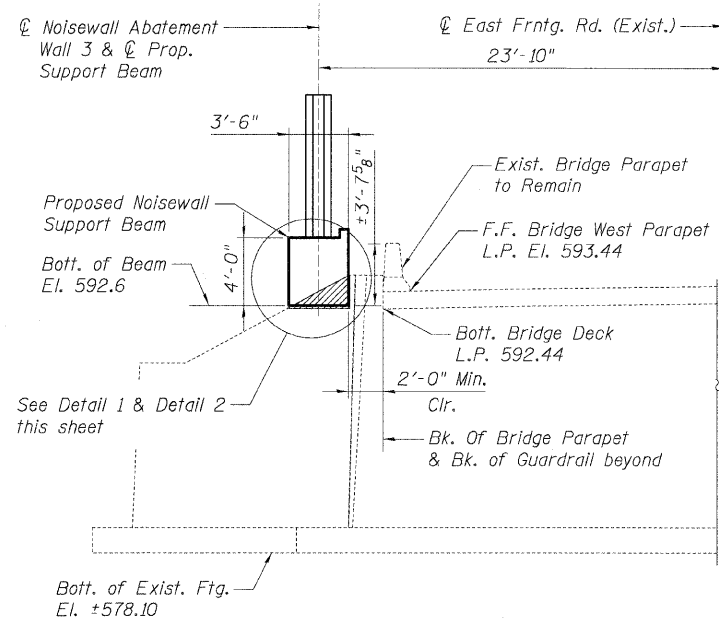


F.A.I. RTE.	SECTION	COUNTY	TOTAL SHEETS	SHEET NO.
55	99 (I&2) I-11	WILL	176	96
STA.		TO STA.		
FED. ROAD DIST. NO.		ILLINOIS FED. AID PROJECT		

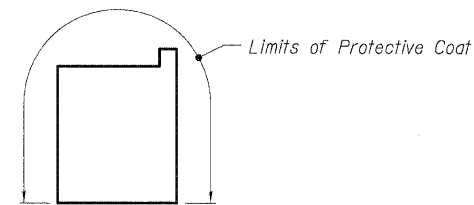
**TOTAL BILL OF MATERIAL**

Item	Unit	Superstructure	Substructure	Total
Concrete Structures	Cu. Yd.	0	28.2	28.2
Protective Coat	Sq. Yd.	0	77.5	77.5
Reinforcement Bars	Pound	0	3,720	3,720
Reinforcement Bars, Epoxy Coated	Pound	0	5,250	5,250
Drilled Shafts in Soil	Cu. Yd.	0	14.4	14.4
Drilled Shafts in Rock	Cu. Yd.	0	2.9	2.9
Permanent Casing	Foot	0	54.8	54.8



**TYPICAL SECTION AT WINGWALL**

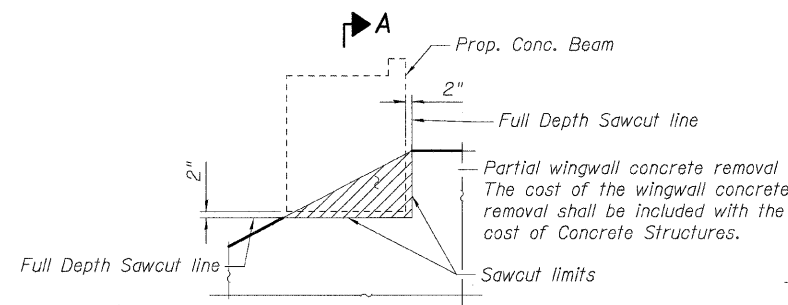
Looking North @ North Abutment  
(South Abutment Similar)



**PROTECTIVE COAT PAY LIMITS**

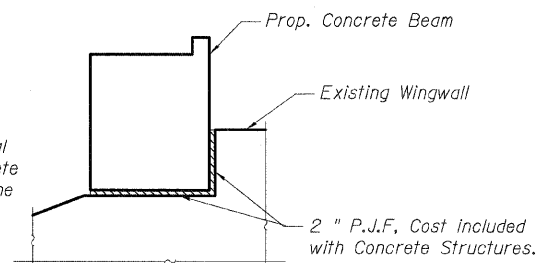
**GENERAL NOTES:**

1. Reinforcement bars shall conform to the requirements of ASTM A 706 Gr 60. See Special Provisions.
2. Reinforcement bars designated (E) shall be epoxy coated.
3. Plan dimensions and details relative to existing structure have been taken from existing plans and are subject to nominal construction variations. It shall be the Contractor's responsibility to verify such dimensions and details in the field and make necessary approved adjustments prior to construction or ordering of materials. Such variations shall not be cause for additional compensation for a change in the scope of the work; however, the Contractor will be paid for the quantity actually furnished at the unit price for the work.
4. Concrete Sealer shall be applied to the designated areas of the existing wingwalls.
5. The Contractor shall make allowance for the deflection of forms, shrinkage and settlement of falsework, in addition to allowance for dead load deflection. Forms for the concrete beam shall be removed prior to placement of the noisewall posts.
6. The cost of full depth sawcuts, grinding, epoxy, concrete removal, concrete sealer and 2 inch preformed expansion joint filler at existing wingwalls and vertical face of the noisewall at the ends of the concrete beam shall be included with Concrete Structures.



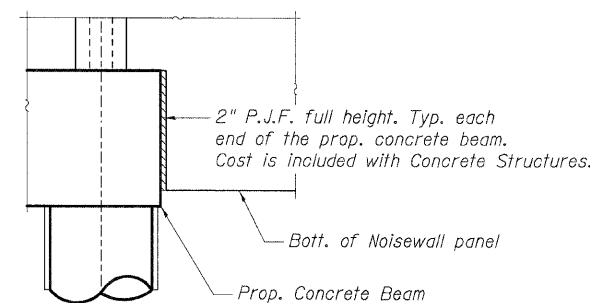
**DETAIL 1**

Showing Concrete Removal

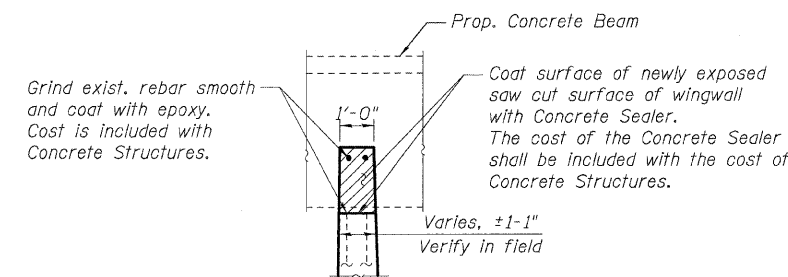


**DETAIL 2**

Showing Final Condition

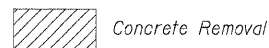


**DETAIL 3**



**SECTION A-A**

**LEGEND:**



**INDEX OF SHEETS**

- S-1 GENERAL PLAN & ELEVATION
- S-2 GENERAL DATA & REMOVAL DETAILS
- S-3 BEAM ELEVATION, SECTIONS & DETAILS
- S-4 DRILLED SHAFT FOUNDATION DETAILS
- S-5 SOIL BORING LOGS I
- S-6 SOIL BORING LOGS II

**SHT. S-2 OF S-6**

REVISIONS	
NAME	DATE

ILLINOIS DEPARTMENT OF TRANSPORTATION  
FAI ROUTE 55 (BLACK ROAD TO U.S. ROUTE 30)  
NOISE ABATEMENT WALLS  
NOISE WALL OVER SUNNYLAND DRAIN AT EAST FRONTAGE ROAD  
S.N. 099-0032, STA. 391+89.74, SECTION 99 (I&2) I-11  
WILL COUNTY

**GENERAL DATA & REMOVAL DETAILS**

SCALE: \_\_\_\_\_ DRAWN BY CB  
DATE 02/06/09 CHECKED BY BGK

**TENG** TENG & ASSOCIATES, INC.  
ENGINEERS/ARCHITECTS/PLANNERS  
CHICAGO, ILLINOIS

PLOT DATE = #DATE#  
 FILE NAME = #FILE#  
 PLOT SCALE = #SCALE#  
 USER NAME = #USER#  
 \\MS121433.DGN, \\ARB114881.DGN, \\MS121433.DGN, \\ARB1494902.DGN  
 2-05-2009, 17:56:50 GARCIAAZ SR, \\DOCUMENT\02561591\STRUCT\UDEN\MS121433.DGN