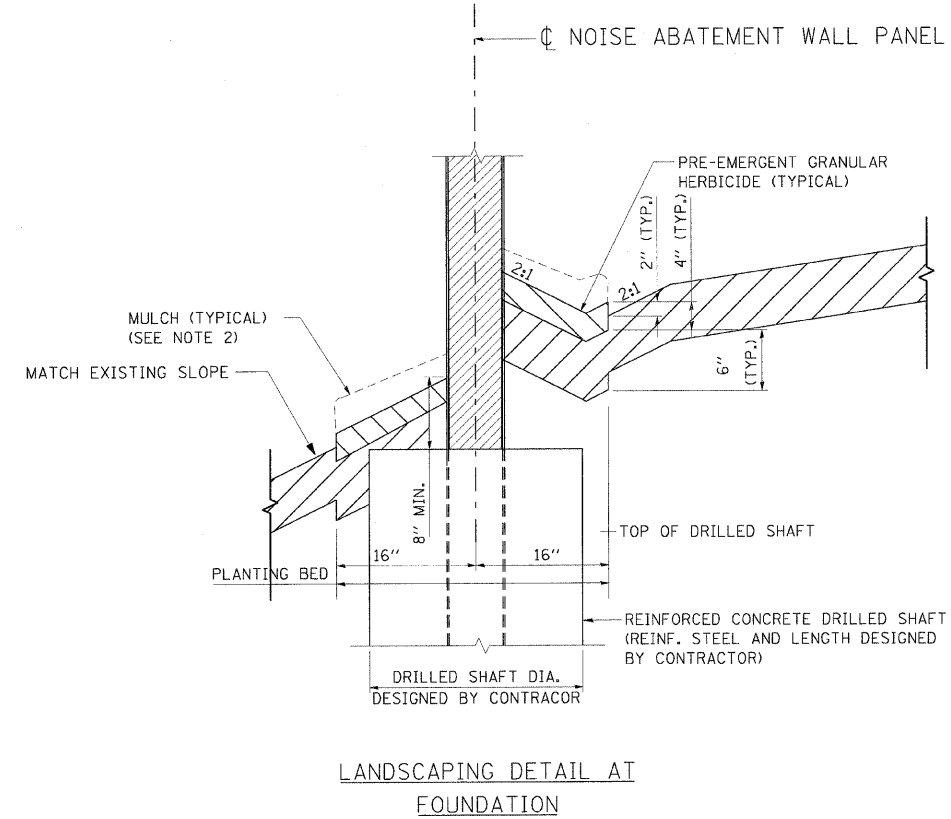
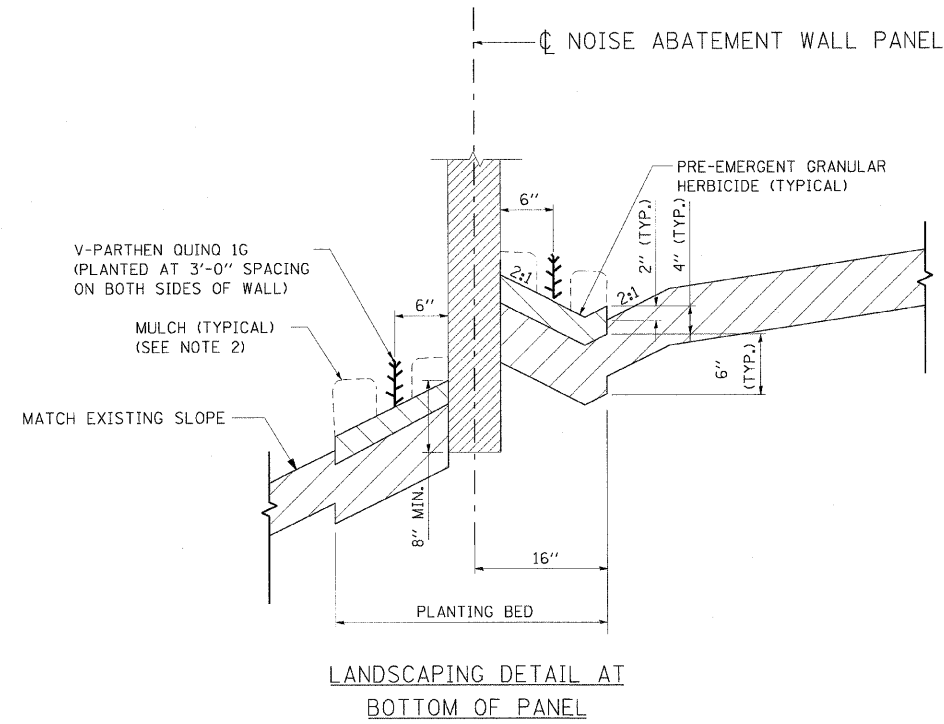


F.A.I. RTE.	SECTION	COUNTY	TOTAL SHEETS	SHEET NO.
55	99 (1&2) 1-12	WILL	147	12
STA.		TO STA.		
FED. ROAD DIST. NO.		ILLINOIS FED. AID PROJECT		
		TYP 06 OF 06		



NOTES

1. COMPOST SHOWN PRIOR TO INCORPORATION INTO TOPSOIL BY TILLING.
2. MULCH SHALL BE PLACED TO COVER THE ENTIRE PLANTING BED EXCEPT AT VINE LOCATIONS.

LEGEND

- TOPSOIL FURNISH AND PLACE, 6"
- COMPOST FURNISH AND PLACE, 4" (SEE NOTE 1)

REVISIONS	
NAME	DATE

ILLINOIS DEPARTMENT OF TRANSPORTATION
 FAI ROUTE 55
 US 30 (PLAINFIELD ROAD) TO WEBER ROAD
 TYPICAL SECTIONS
 LANDSCAPING DETAILS

SCALE: NTS
 DATE: 2-06-09
 DRAWN BY: MMS
 CHECKED BY: DM

