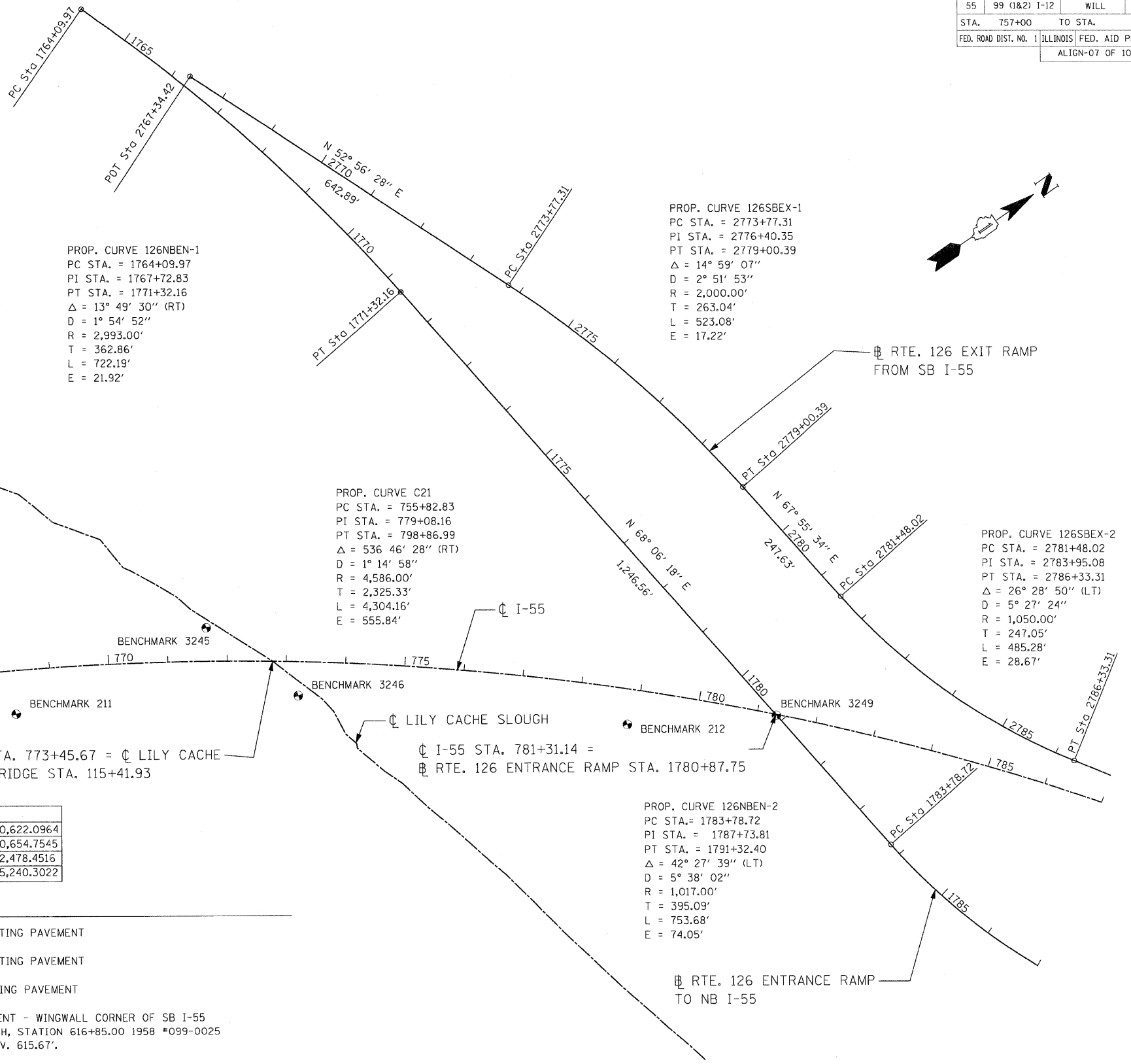
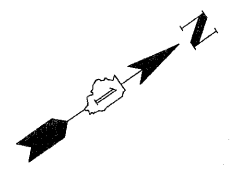


F.A.I. RTE.	SECTION	COUNTY	TOTAL SHEETS	SHEET NO.
55	99 (1&2) I-12	WILL	147	22
STA.	757+00	TO STA.	787+00	
FED. ROAD DIST. NO. 1		ILLINOIS		FED. AID PROJECT
ALIGN-07 OF 10				



PROP. CURVE 126NBEN-1
 PC STA. = 1764+09.97
 PI STA. = 1767+72.83
 PT STA. = 1771+32.16
 $\Delta = 13^\circ 49' 30''$ (RT)
 D = $1^\circ 54' 52''$
 R = 2,993.00'
 T = 362.86'
 L = 722.19'
 E = 21.92'

PROP. CURVE 126SBEX-1
 PC STA. = 2773+77.31
 PI STA. = 2776+40.35
 PT STA. = 2779+00.39
 $\Delta = 14^\circ 59' 07''$
 D = $2^\circ 51' 53''$
 R = 2,000.00'
 T = 263.04'
 L = 523.08'
 E = 17.22'

PROP. CURVE C21
 PC STA. = 755+82.83
 PI STA. = 779+08.16
 PT STA. = 798+86.99
 $\Delta = 536' 46'' 28''$ (RT)
 D = $1^\circ 14' 58''$
 R = 4,586.00'
 T = 2,325.33'
 L = 4,304.16'
 E = 555.84'

PROP. CURVE 126SBEX-2
 PC STA. = 2781+48.02
 PI STA. = 2783+95.08
 PT STA. = 2786+33.31
 $\Delta = 26^\circ 28' 50''$ (LT)
 D = $5^\circ 27' 24''$
 R = 1,050.00'
 T = 247.05'
 L = 485.28'
 E = 28.67'

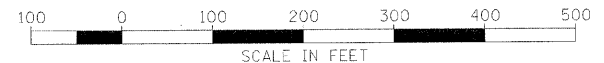
PROP. CURVE 126NBEN-2
 PC STA. = 1783+78.72
 PI STA. = 1787+73.81
 PT STA. = 1791+32.40
 $\Delta = 42^\circ 27' 39''$ (LT)
 D = $5^\circ 38' 02''$
 R = 1,017.00'
 T = 395.09'
 L = 753.68'
 E = 74.05'

PROJECT ENDS:
 STA. 767+00.00

MATCHLINE STA. 751+00.00

CURVE C21				
PI STA.	779+08.16	N 1,809,643.8028	E 1,030,622.0964	
PC STA.	755+82.83	N 1,807,318.7012	E 1,030,654.7545	
PT STA.	798+86.99	N 1,811,044.1989	E 1,032,478.4516	
CC		N 1,807,383.1093	E 1,035,240.3022	

BENCHMARK DESCRIPTION	
BENCHMARK 210	SET REBAR +/- 25' SE OF EXISTING PAVEMENT
BENCHMARK 211	SET REBAR +/- 25' SE OF EXISTING PAVEMENT
BENCHMARK 212	SET REBAR +/- 5' SE OF EXISTING PAVEMENT
BENCHMARK 3245	SQUARE CUT ON TOP SW ABUTMENT - WINGWALL CORNER OF SB I-55 BRIDGE OVER LILY CACHE SLOUGH, STATION 616+85.00 1958 #099-0025 N 1808892.16 E 1030849.27, ELEV. 615.67'.
BENCHMARK 3246	FD SQUARE CUT ON TOP OF SE CORNER OF ABUTMENT - WINGWALL OF NB I-55 BRIDGE OVER LILY CACHE SLOUGH STATION 616+85.00 1956 #099-0024 N 1809000.07 E 1031009.38, ELEV. 615.57'.
BENCHMARK 3249	SQUARE CUT ON E EDGE AND S END OF MIDDLE PIER OF RTE. 126 BRIDGE OVER I-55. N 1809747.63 E 1031312.57, ELEV. 625.30'.



REVISIONS	
NAME	DATE

ILLINOIS DEPARTMENT OF TRANSPORTATION
 FAI ROUTE 55
 US 30 (PLAINFIELD ROAD) TO WEBER ROAD

ALIGNMENT, TIES AND BENCHMARKS

SCALE: 1"=100'
 DATE: 2-06-09

DRAWN BY: MMS
 CHECKED BY: DM