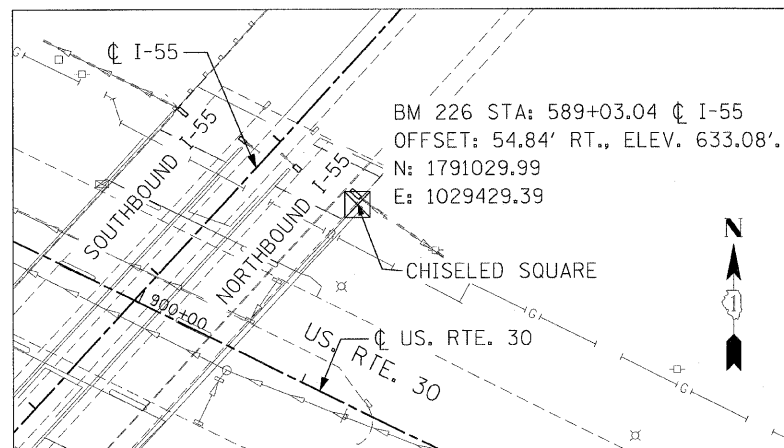
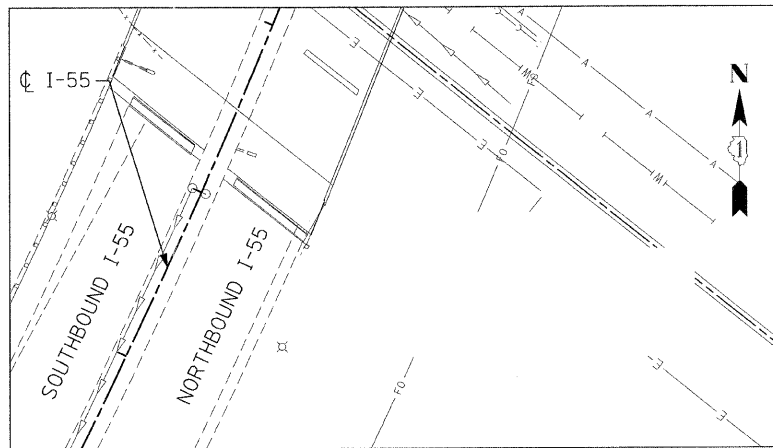


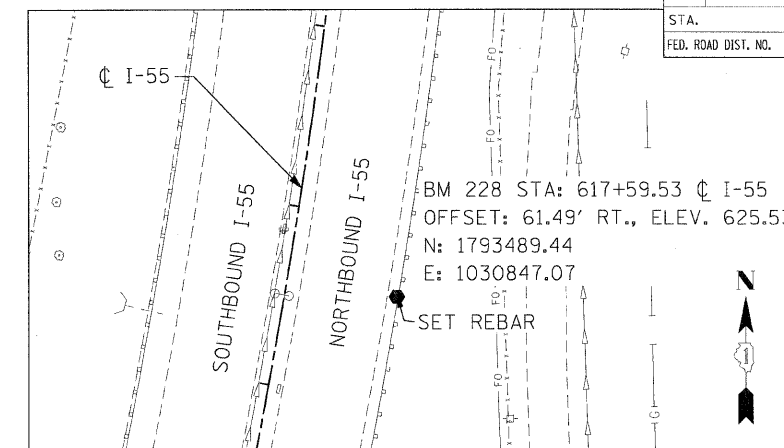
F.A.I. RTE.	SECTION	COUNTY	TOTAL SHEETS	SHEET NO.
55	99 (1&2) I-12	WILL	147	23
STA.	TO STA.			
FED. ROAD DIST. NO.	ILLINOIS	FED. AID PROJECT	ALIGN-8 OF 10	



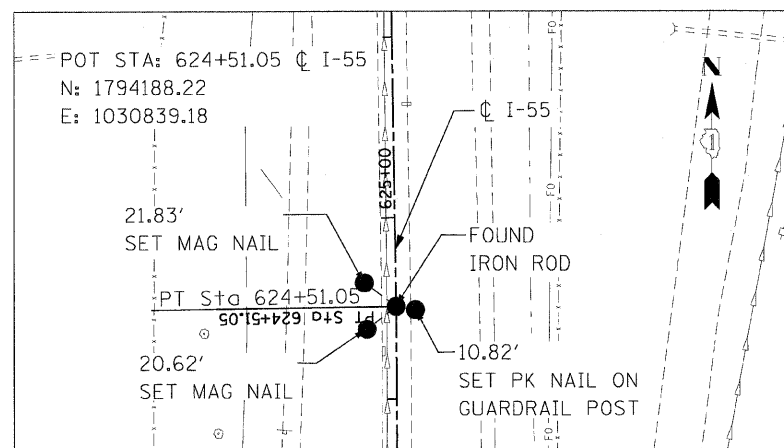
BENCHMARK 226



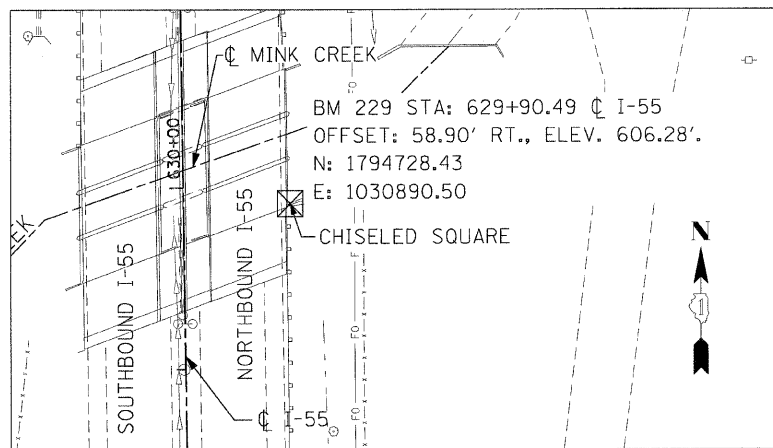
BENCHMARK 227



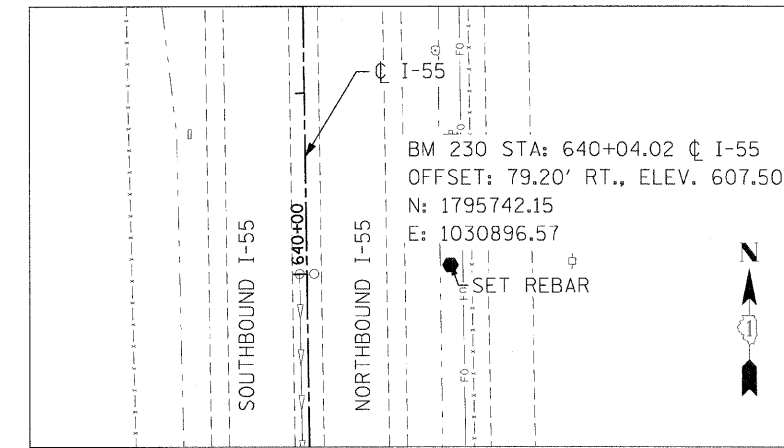
BENCHMARK 228



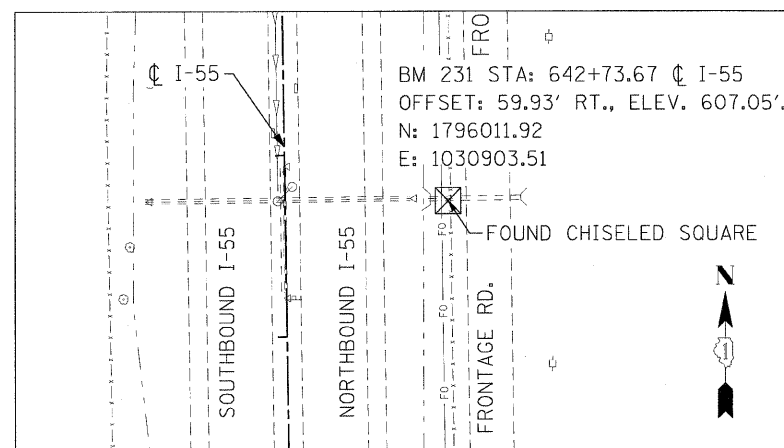
POT STA: 624+51.05



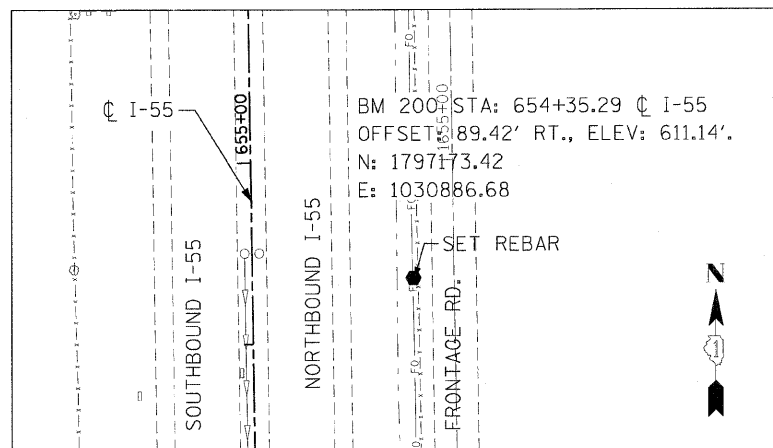
BENCHMARK 229



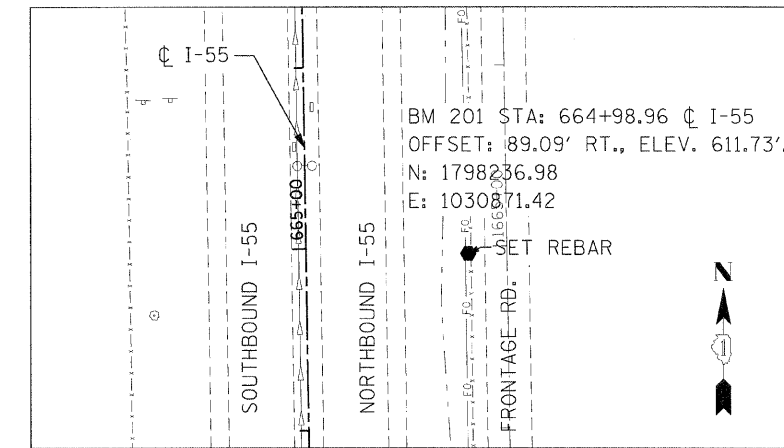
BENCHMARK 230



BENCHMARK 231



BENCHMARK 200



BENCHMARK 201

REVISIONS	
NAME	DATE

ILLINOIS DEPARTMENT OF TRANSPORTATION
FAI ROUTE 55
US 30 (PLAINFIELD ROAD) TO WEBER ROAD

ALIGNMENT, TIES AND
BENCHMARKS

SCALE: NONE
DATE: 2-06-09

DRAWN BY: MMS
CHECKED BY: DM



FINAL