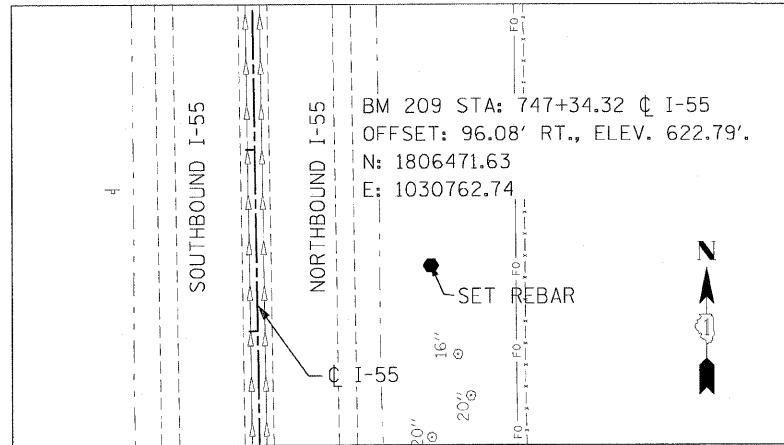
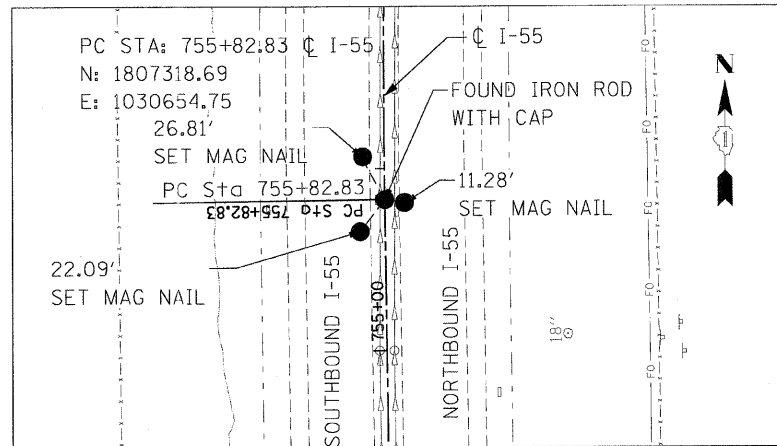


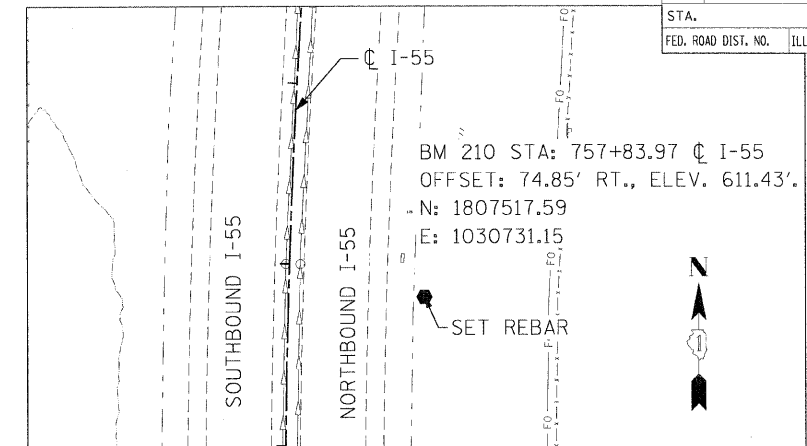
F.A.I. RTE.	SECTION	COUNTY	TOTAL SHEETS	SHEET NO.
55	99 (1&2) I-12	WILL	147	25
STA.		TO STA.		
FED. ROAD DIST. NO.		ILLINOIS FED. AID PROJECT		
ALIGN-10 OF 10				



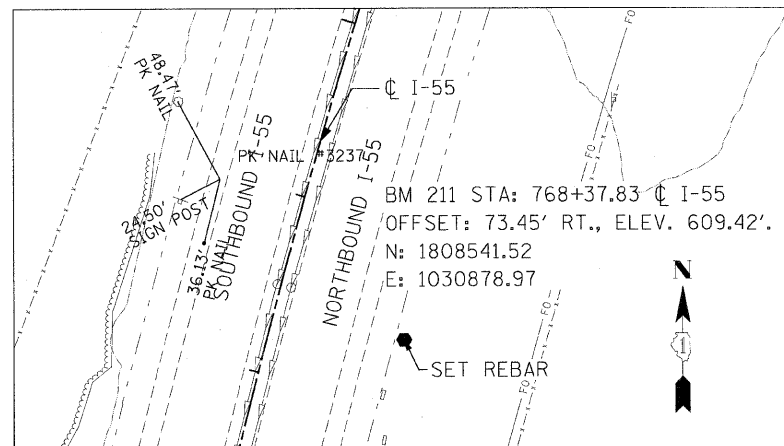
BENCHMARK 209



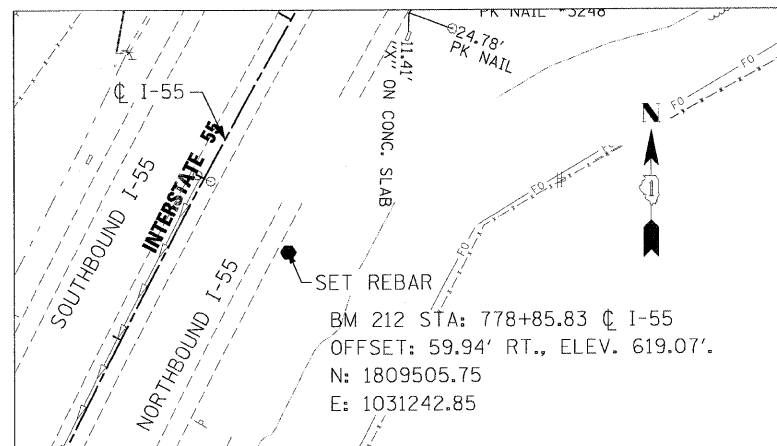
PC STA. 755+82.83



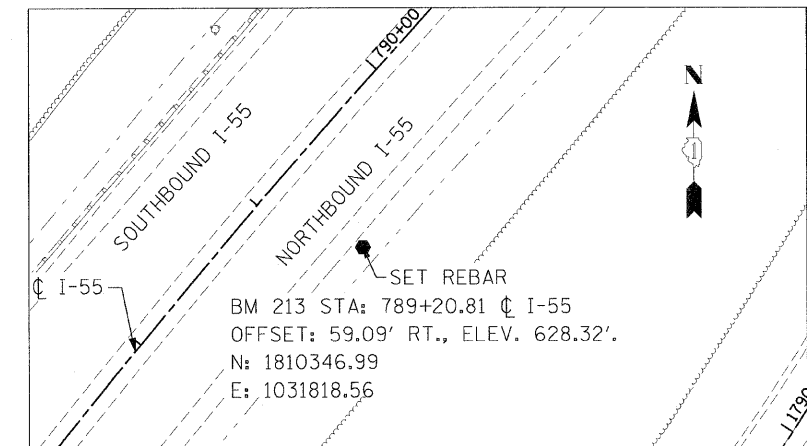
BENCHMARK 210



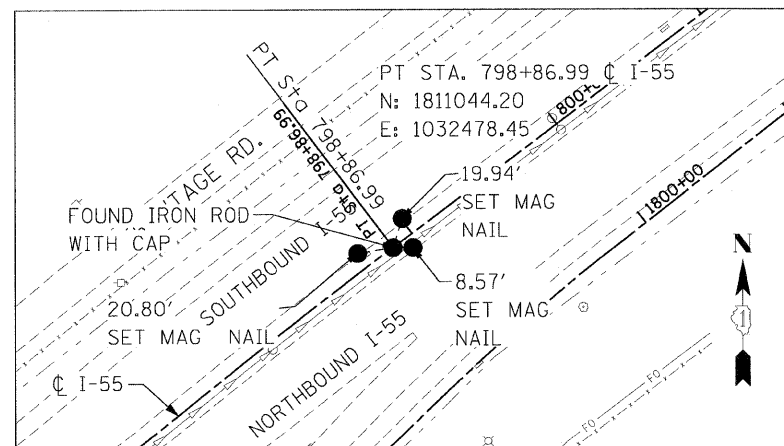
BENCHMARK 211



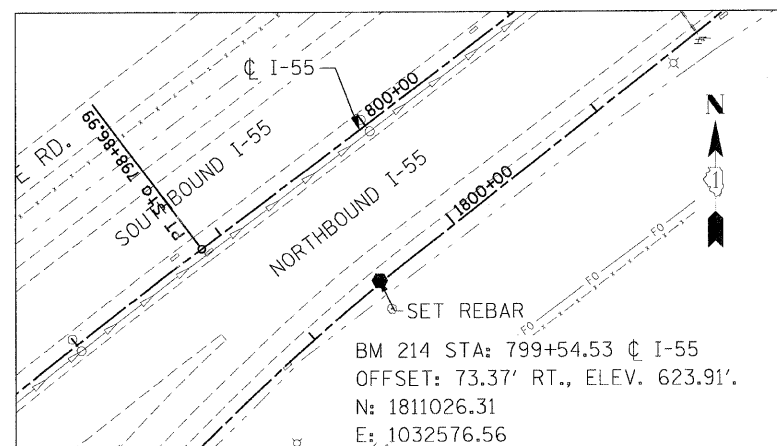
BENCHMARK 212



BENCHMARK 213



PT STA. 798+86.99



BENCHMARK 214

REVISIONS	
NAME	DATE

ILLINOIS DEPARTMENT OF TRANSPORTATION  
 FAI ROUTE 55  
 US 30 (PLAINFIELD ROAD) TO WEBER ROAD  
 ALIGNMENT, TIES AND  
 BENCHMARKS

SCALE: NONE  
 DATE: 2-06-09

DRAWN BY: MMS  
 CHECKED BY: DM

