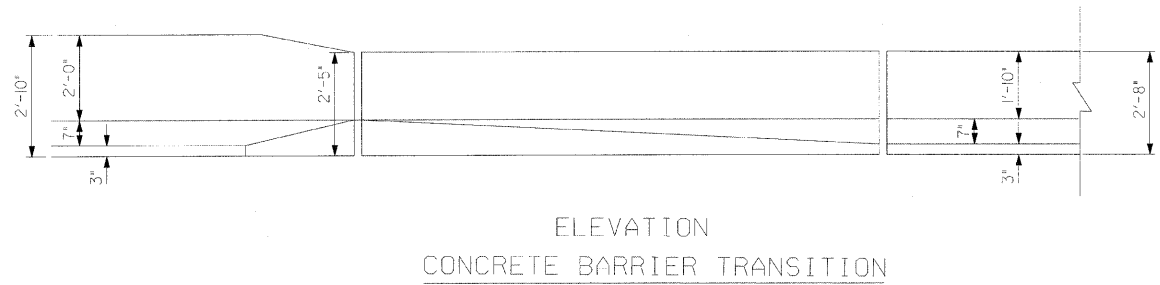
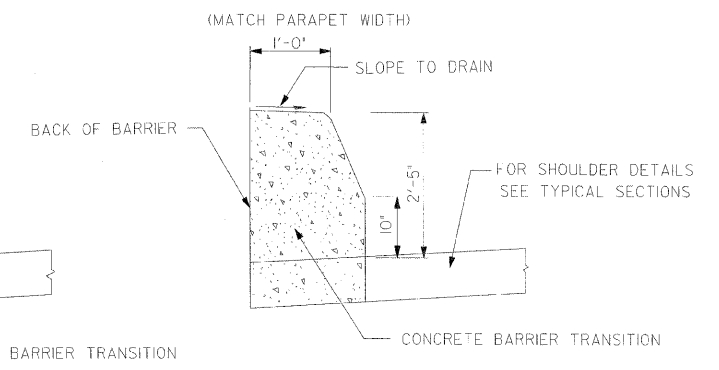
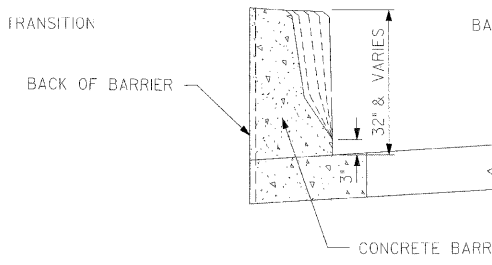
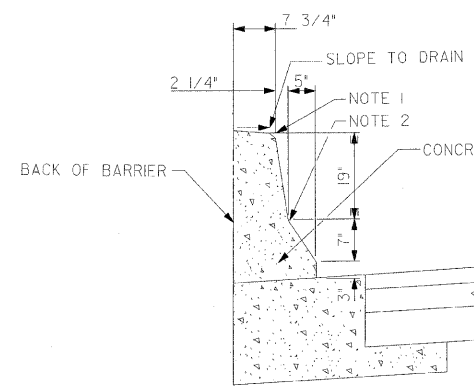
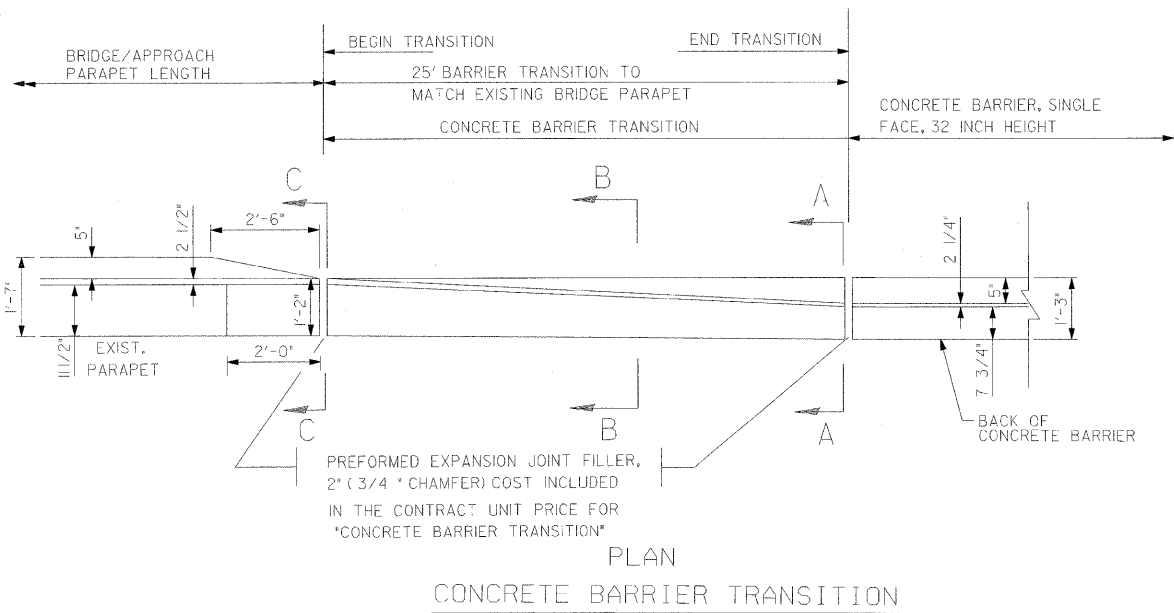
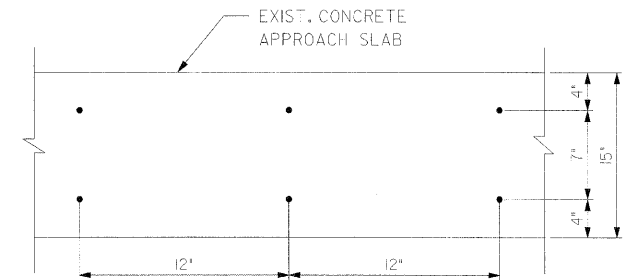
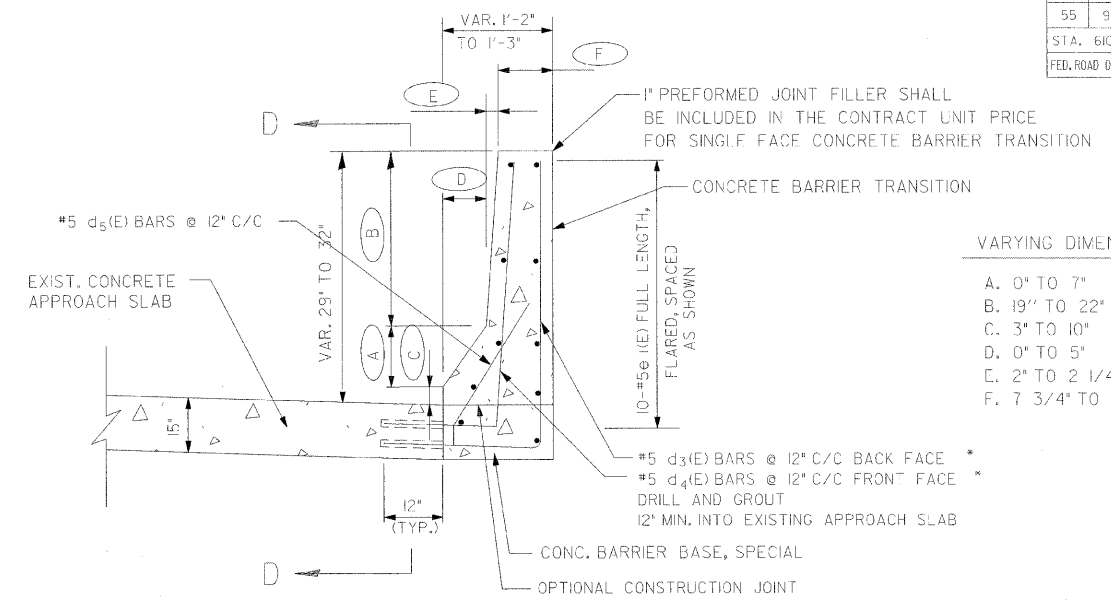
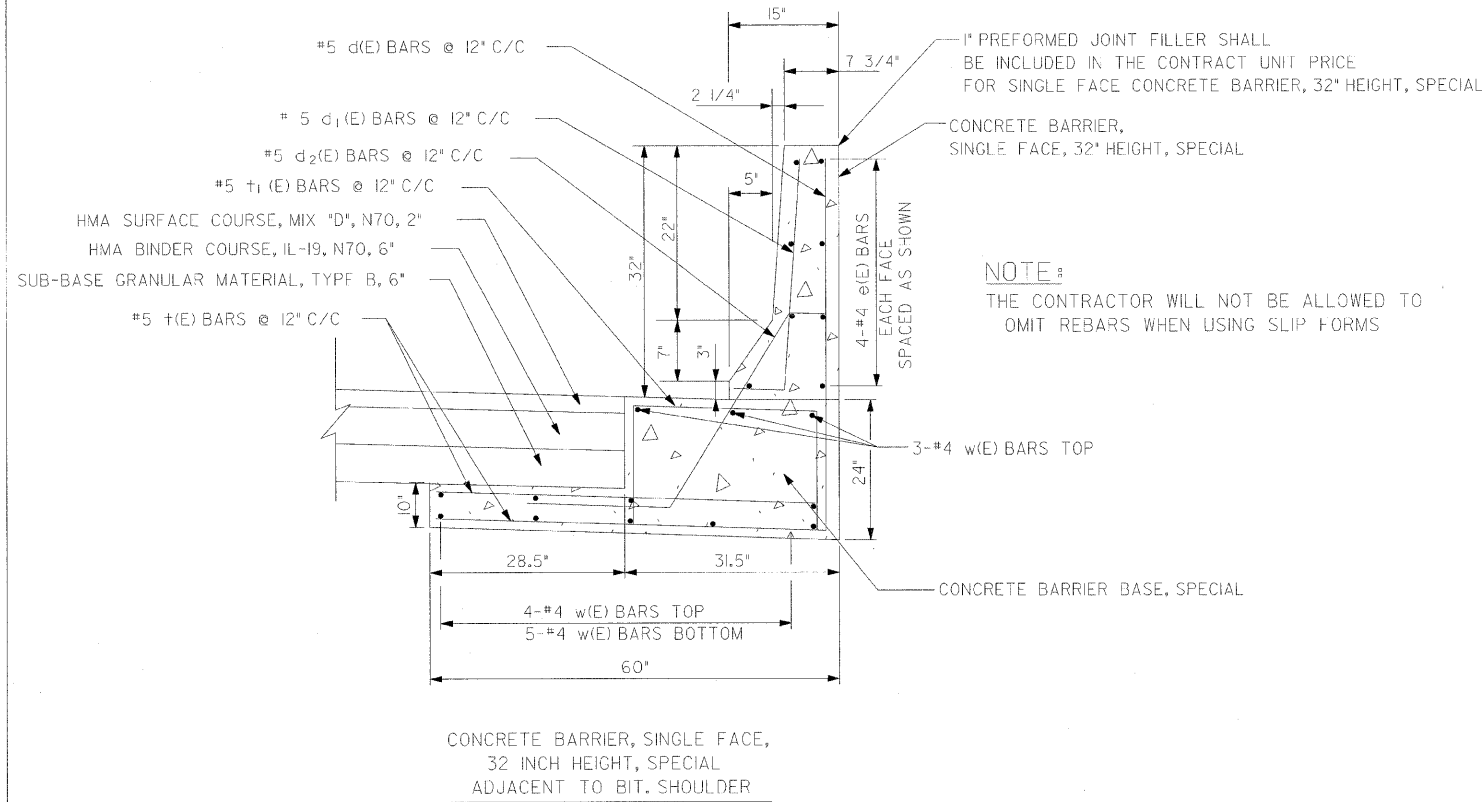


F.A. RTE.	SECTION	COUNTY	TOTAL SHEETS	SHEET NO.
55	99 (1&2) 1-12	WILL	147	74
STA. 610+25.64		TO STA. 767+00.00		
FED. ROAD DIST. NO.		ILLINOIS	FED. AID PROJECT	



NOTE 1 - 1/2" CHAMFER OR 1" RADIUS (OPTIONAL)
 NOTE 2 - 10" RADIUS (OPTIONAL)

GENERAL NOTES - PREFORMED JOINT FILLER SHALL BE INCLUDED IN THE CONTRACT UNIT PRICE FOR CONCRETE BARRIER TRANSITION.

REVISIONS	
NAME	DATE

ILLINOIS DEPARTMENT OF TRANSPORTATION
 FAIRCUTE 55
 US 30 (PLAINFIELD ROAD) TO WEBER ROAD
 CONCRETE BARRIER TRANSITION AND BARRIER DETAILS

SCALE: 1" = 12"
 DATE: 6-2-09
 DRAWN BY: MWS
 CHECKED BY: DM



FINAL