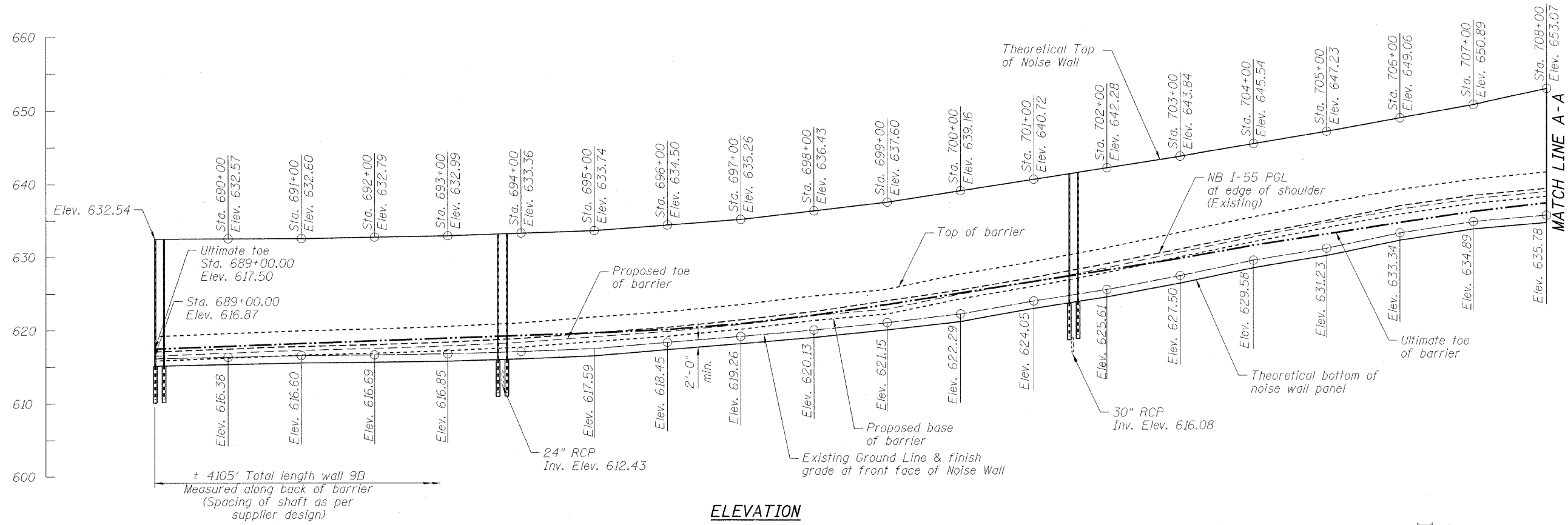
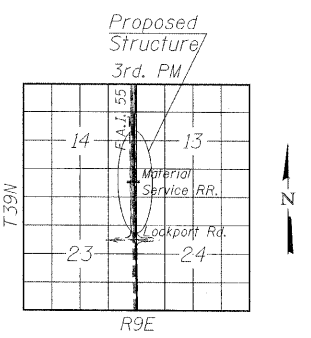
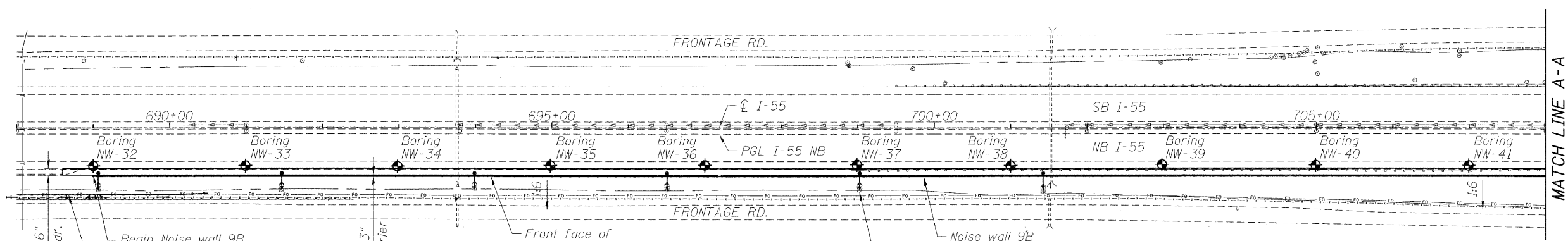


Bench Mark: No. 3206
 Cut on top SE wingwall of bridge over Mink Creek and 200' South of Renwick Rd. Elev. 606.27.
 Existing Structure: None
 Staging: See roadway MOT plans.
 Salvage: None

STATE OF ILLINOIS
 DEPARTMENT OF TRANSPORTATION



Notes:
 See sheet 2 of 14 for match line A-A.
 See sheet 3 of 14 for typical section.
 See roadway plans for drainage invert elevation.



ELEVATION

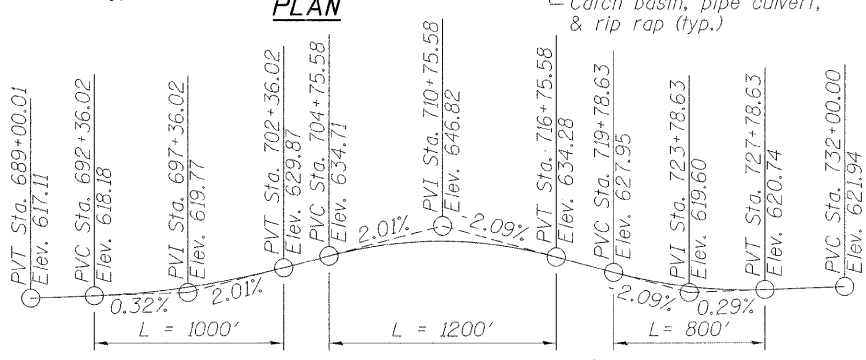
PLAN

LOCATION SKETCH

LOADING
 Wind Load on noise wall = 35 psf

DESIGN SPECIFICATIONS
 AASHTO 2002 Standard Specifications for Highway Bridges
 AASHTO 1989 Guide Specifications for Structural Design of Sound Barriers and 1992 & 2002 Interims

DESIGN STRESSES
 FIELD UNITS
 $f_c = 3,500$ psi
 $f_y = 60,000$ psi (reinforcement)
 $f_y = 50,000$ psi (M270 Grade 50)



EXISTING PROFILE GRADE
 (Along NB I-55 Proposed edge of shoulder)
 See roadway plan & profile plans for existing elevation



APPROVED
 FOR STRUCTURAL ADEQUACY ONLY
 Ralph E. Andersen (P.E.)
 ENGINEER OF BRIDGES AND STRUCTURES

Signed *Jamal Grainawi*
 Jamal I. Grainawi, S.E. IL Lic. No. 081-005161
 Expires 11-30-2010
 Date 6/12/2009

GENERAL PLAN & ELEVATION
 F.A.I. RT. I-55 SEC. 99 (1&2) I-12
 WILL COUNTY
 STA. 689+00.00 TO 730+05.00
 STRUCTURE NO. 099-W025

DESIGNED	P. LOPEZ
CHECKED	J. GRAINAWI
DRAWN	D. C. PATEL
CHECKED	J. GRAINAWI

SHEET NO. 1 14 SHEETS	F.A.I. RTE.	SECTION	COUNTY	TOTAL SHEETS	SHEET NO.
	55	99 (1&2) I-12	WILL	147	90
CONTRACT NO. 60B04					
FED. ROAD DIST. NO. 7 ILLINOIS FED. AID PROJECT					



T:\16817A\Struct\Cadd\Pre-Final\Noise wall\Wall 9b\099W025-60B04-001.dgn 12-JUN-2009 16:19