

STATE OF ILLINOIS
DEPARTMENT OF TRANSPORTATION

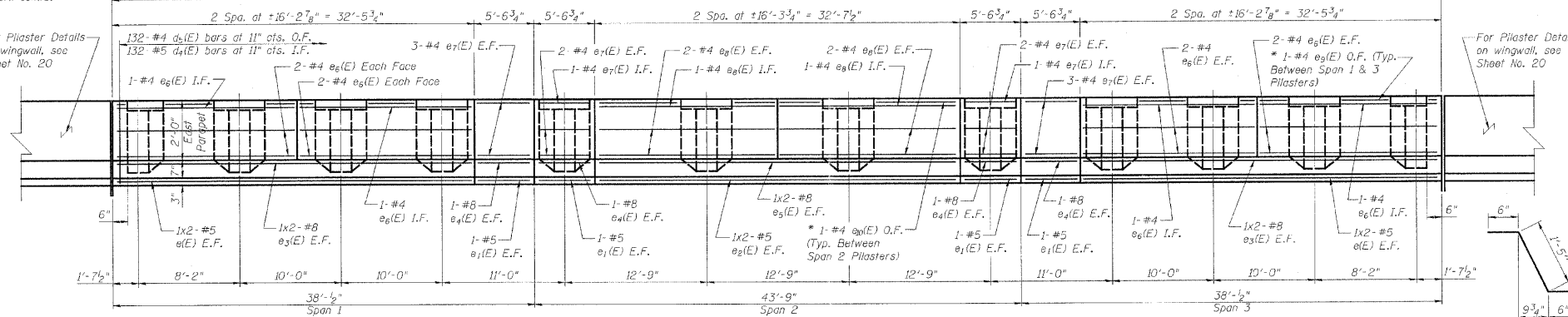
STATE OF ILLINOIS
DEPARTMENT OF TRANSPORTATION

ROUTE NO.	SECTION	COUNTY	SHEETS	POST	SHEET NO. 10
FAI-55	##	WILL	505	351	32 SHEETS
FED. ROAD DIST. NO. 7	ILLINOIS	FED. AID PROJECT-			
** SECTION 2006-032 BY CONTRACT NO. 60B85					

Note:

* $e_3(E)$ & $e_4(E)$ bars shall be cut in field to clear $\frac{1}{2}$ " Preformed Self Expanding Cork Joints.

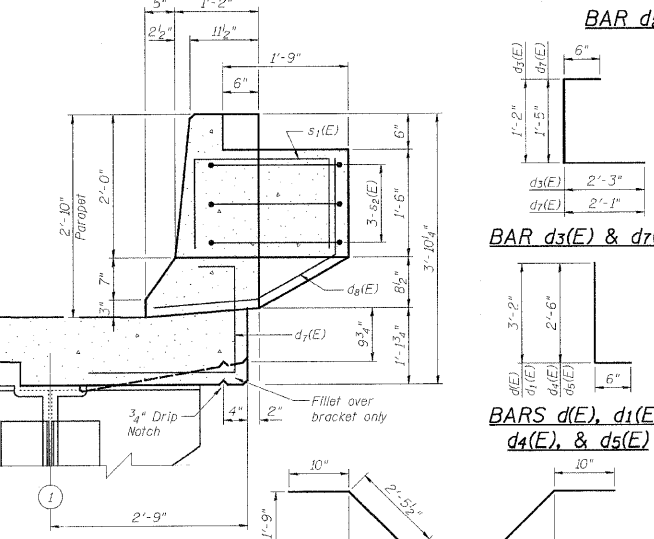
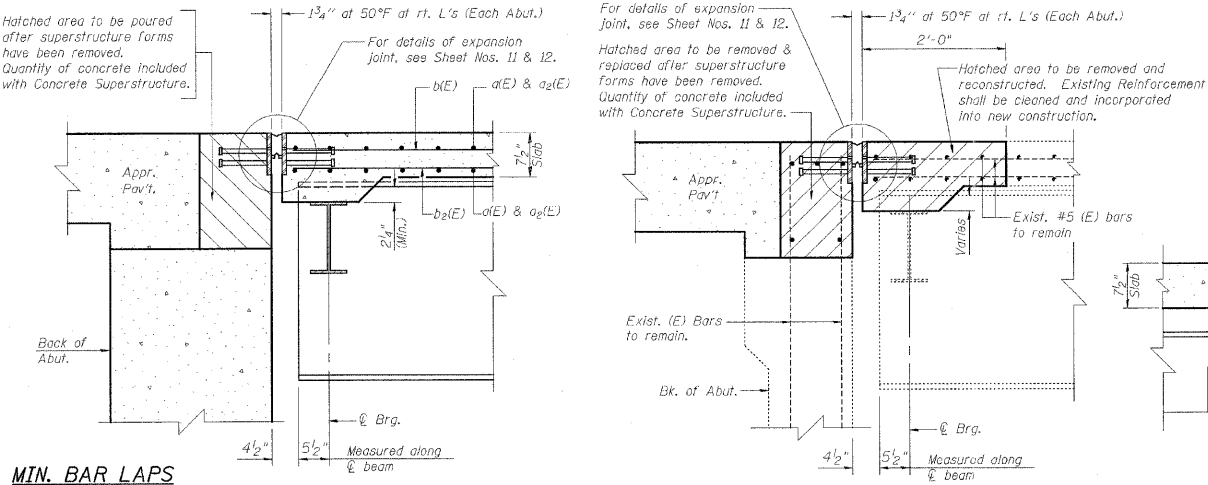
For Plaster Details on wingwall, see Sheet No. 20



BILL OF MATERIAL
NB & SB SUPERSTRUCTURE

Bar	No.	Size	Length	Shape	
$a_1(E)$	676	#6	21'-1"		
$a_2(E)$	288	#6	4'-0"		
$a_3(E)$	338	#5	6'-2"		
$a_4(E)$	36	#5	1'-6"		
$b_1(E)$	216	#5	31'-7"		
$b_2(E)$	96	#6	14'-0"		
$b_3(E)$	226	#5	25'-9"		
$c_1(E)$	264	#5	3'-8"		
$c_2(E)$	264	#4	3'-8"		
$c_3(E)$	402	#5	2'-5"		
$c_4(E)$	264	#4	3'-11"		
$d_1(E)$	138	#5	3'-0"		
$d_2(E)$	138	#4	3'-0"		
$d_3(E)$	114	#4	3'-9"		
$d_4(E)$	24	#4	4'-0"		
$d_5(E)$	36	#5	4'-0"		
$d_6(E)$	24	#5	17'-4"		
$d_7(E)$	24	#5	5'-4"		
$d_8(E)$	12	#8	18'-6"		
$d_9(E)$	24	#8	5'-4"		
$d_{10}(E)$	12	#8	18'-7"		
$d_{11}(E)$	84	#4	16'-0"		
$d_{12}(E)$	86	#4	5'-4"		
$d_{13}(E)$	42	#4	16'-1"		
$d_{14}(E)$	6	#4	5'-0"		
$d_{15}(E)$	3	#4	7'-9"		
$d_{16}(E)$	60	#4	2'-7"		
$d_{17}(E)$	36	#5	4'-4"		
$d_{18}(E)$	30	#5	8'-10"		
$d_{19}(E)$	6	#5	1'-11"		
Reinforcement Bars, Epoxy Coated				Pound	50,300
Concrete Superstructure				Cu. Yds.	214.0
Bridge Deck Grooving				Sq. Yds.	579
Protective Coat *				Sq. Yds.	1,631
Floor Drains				Each	10
Preformed Joint Seal, 2 1/2"				Foot	120
Conduit Embedded in Structure, 2" Dia., Galvanized Steel				Foot	240

INSIDE ELEVATION OF NB EAST PARAPET



MTN. BAR LAPS

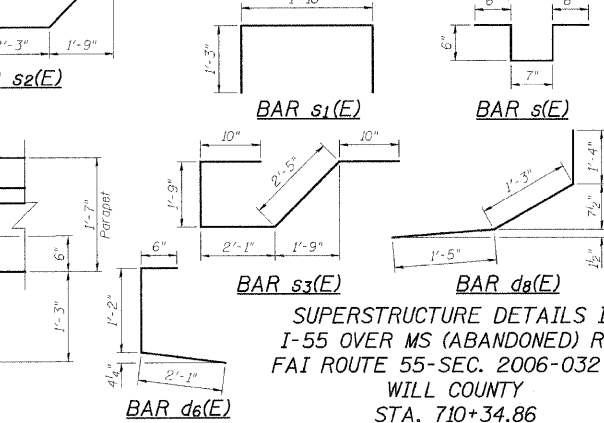
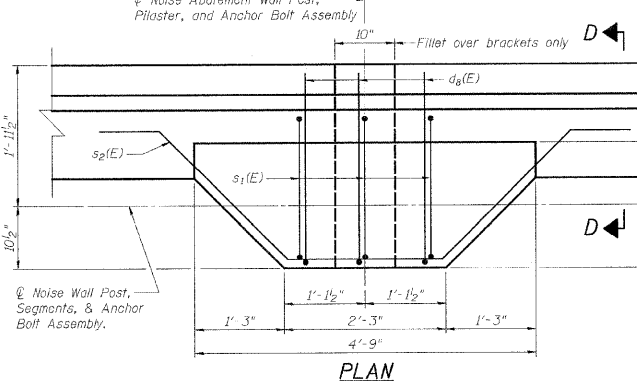
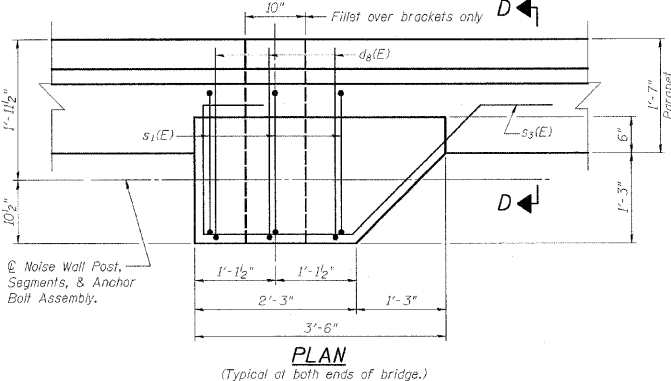
#4	1'-8"
#5	2'-2"
#8	4'-6"

Notes:

1. Reinforcement bars designated (E) shall be epoxy coated.
2. Bars indicated thus 1 x 2-#5 etc, indicates 1 line of bars with 2 lengths per line.
3. Cut longitudinal reinforcement to clear Drainage Scuppers & Floor Drains.
4. Work this sheet with Sheet Nos. 7, 8, & 9.

DESIGNED	S.CHELBIAN
CHECKED	J.GRAINAWI
DRAWN	S.CHELBIAN
CHECKED	J.GRAINAWI

Date: 6/30/2006



SUPERSTRUCTURE DETAILS II
I-55 OVER MS (ABANDONED) R.R.
FAI ROUTE 55-SEC. 2006-032 BY
WILL COUNTY
STA. 710+34.86
STRUCTURE NO. 099-0022 (NB)
STRUCTURE NO. 099-0023 (SB)



NB BRIDGE BARRIER DETAILS
STRUCTURE NO. 099-W025

SHEET NO. 4	F.A.I. RTE.	SECTION	COUNTY	TOTAL SHEETS	SHEET NO.
	55	99 (1&2) I-12	WILL	147	92a
14 SHEETS	CONTRACT NO. 60B04			ILLINOIS FED. AID PROJECT	
	FED. ROAD DIST. NO. 7				

FOR INFORMATION ONLY



T:\16617A Struct\Cadd\Pre-Final\Noise wall\Wall_BD099\W025-60B04-004.dgn
05-FEB-2009 19:03

6/30/2006 4:18:25 PM G:\16617A Struct\Cadd\Pre-Final\MS RRF\Final Bridge Contract\2006-032\60B04-004.dgn