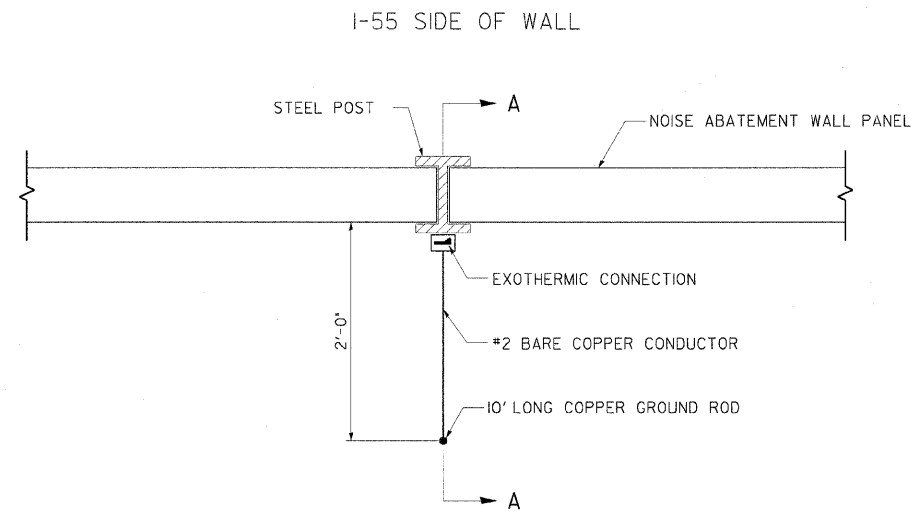
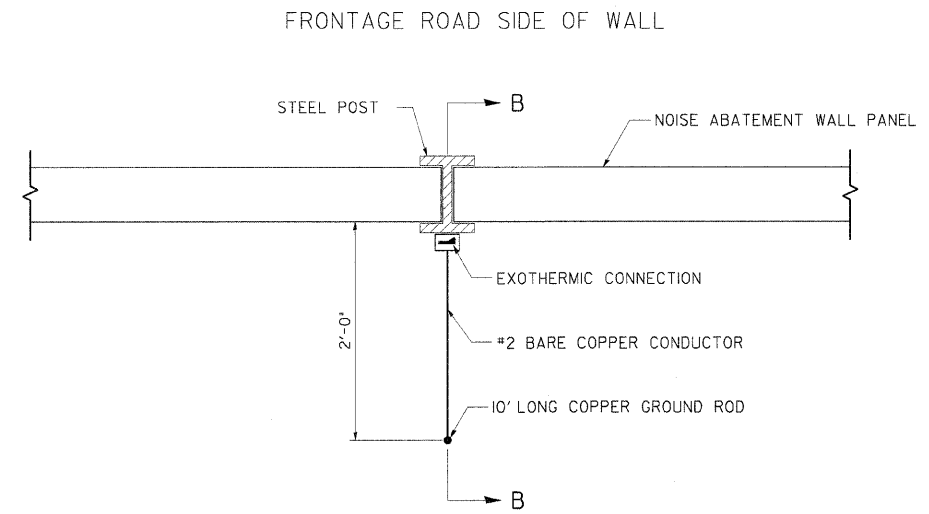


F.A.L. RTE.	SECTION	COUNTY	TOTAL SHEETS	SHEET NO.
55	99 (I&2) I-12	WILL	147	100A
STA.		TO STA.		
FED. ROAD DIST. NO.	ILLINOIS	FED. AID PROJECT		

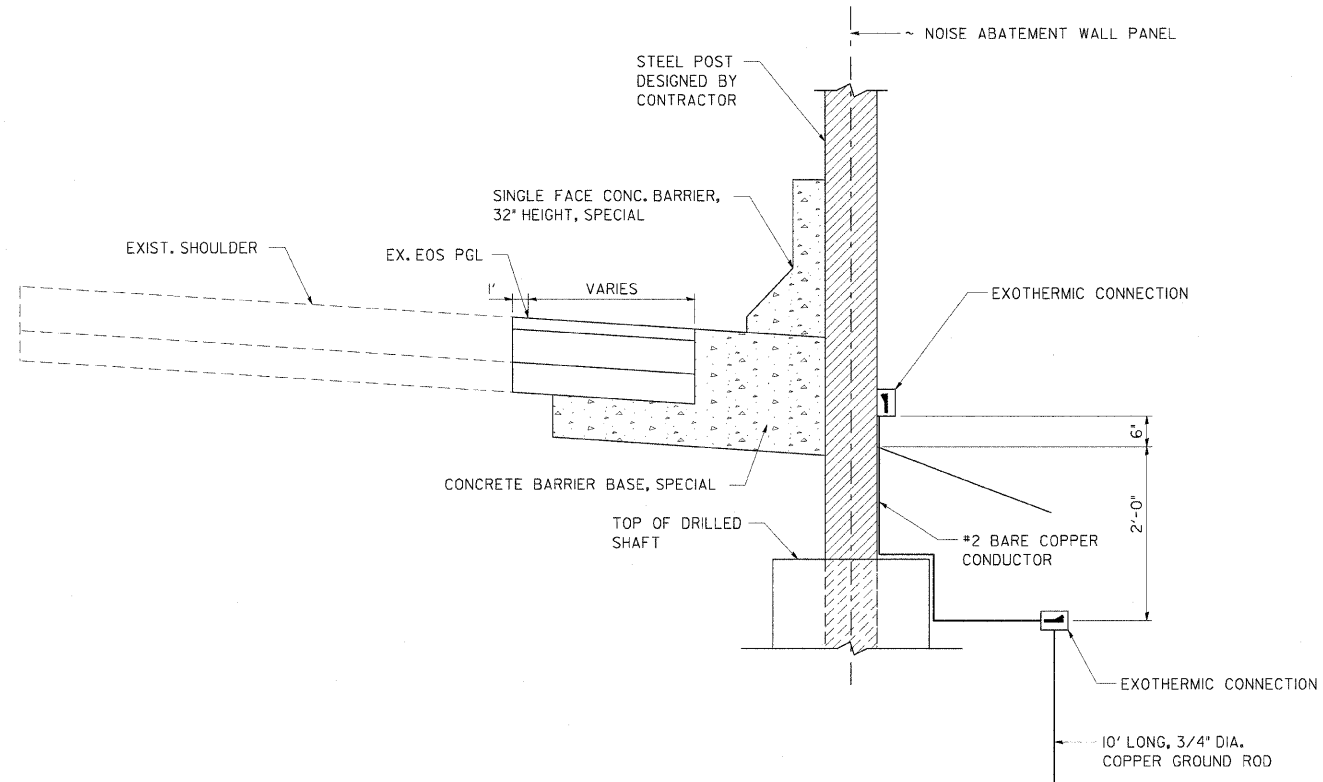


I-55 SIDE OF WALL
FRONTAGE ROAD SIDE OF WALL
PLAN SECTION AT WALLS 7 & 9B

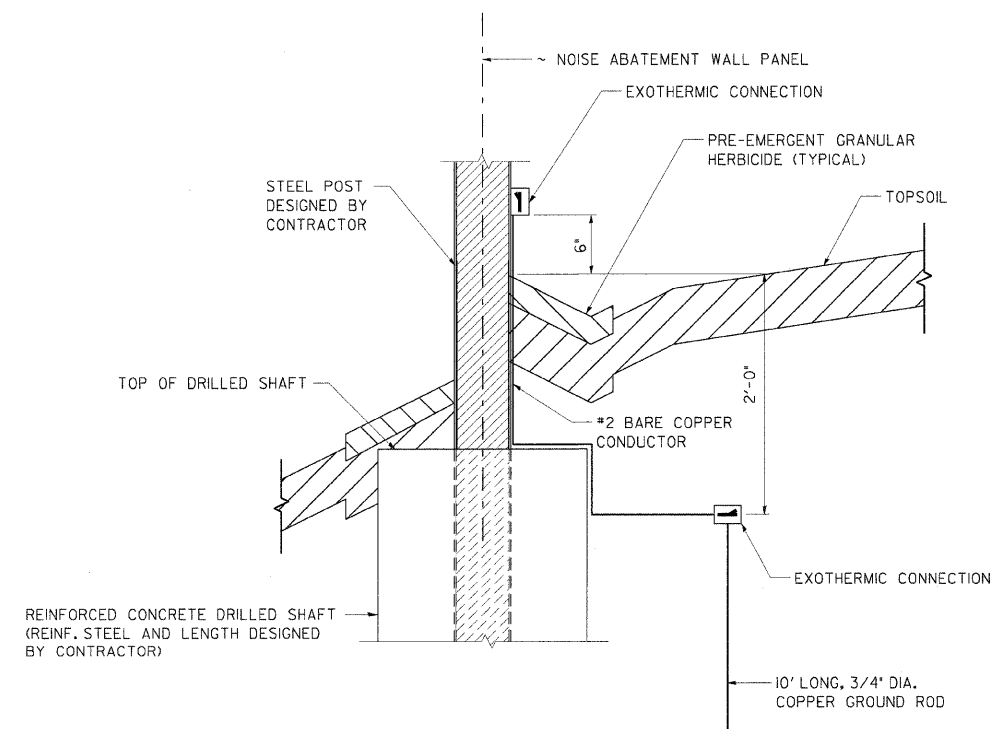


FRONTAGE ROAD SIDE OF WALL
I-55 SIDE OF WALL
PLAN SECTION AT GROUND MOUNTED WALL

TYPICAL SOUND WALL GROUNDING
PROVIDE AT EACH POST WITHIN COMED PROPERTY OR WITHIN 30' OF OVERHEAD TRANSMISSION WIRES



SECTION A-A
(AT WALLS 7 & 9B)



SECTION B-B
(AT GROUND MOUNTED NOISE ABATMENT WALL)

REVISIONS	
NAME	DATE

ILLINOIS DEPARTMENT OF TRANSPORTATION
FAI ROUTE 55
US 30 (PLAINFIELD ROAD) TO WEBER ROAD
GROUNDING DETAILS FOR STEEL POSTS
SCALE: 1 NTS
DATE: 6-12-09
DRAWN BY: HA
CHECKED BY: PL

