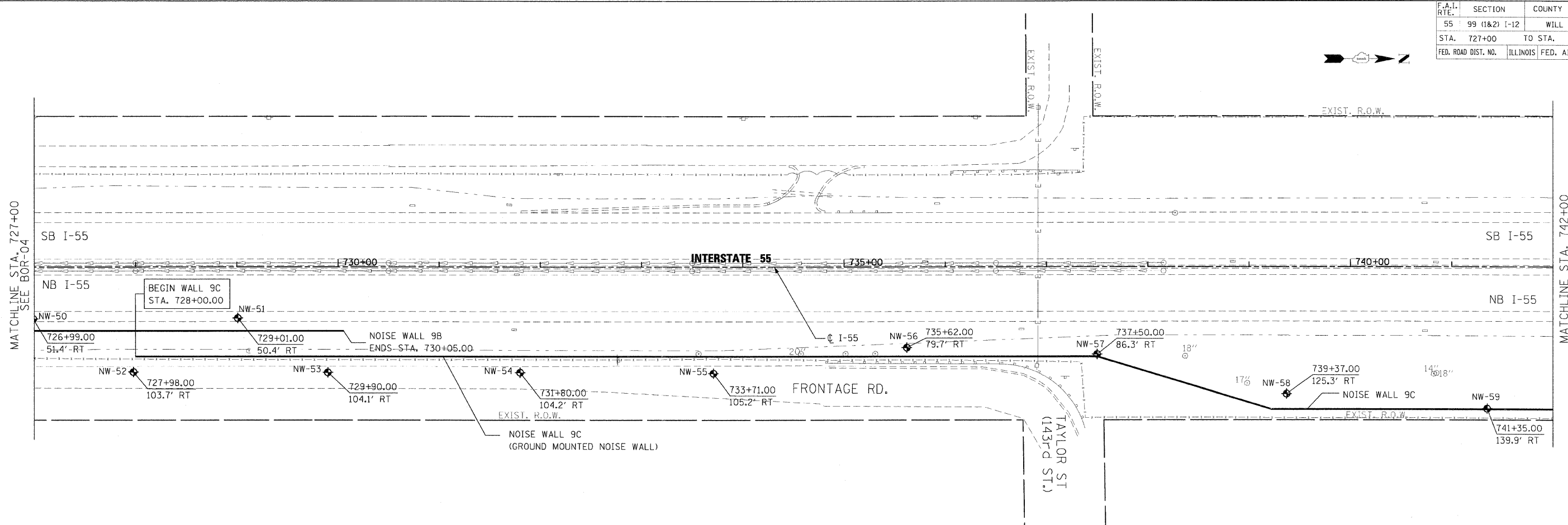


| F.A.I. RTE. | SECTION | COUNTY | TOTAL SHEETS | SHEET NO. |
|---------------------|---------------|---------------------------|--------------|-----------|
| 55 | 99 (I&2) I-12 | WILL | 147 | 105 |
| STA. 727+00 | | TO STA. 757+00 | | |
| FED. ROAD DIST. NO. | | ILLINOIS FED. AID PROJECT | | |



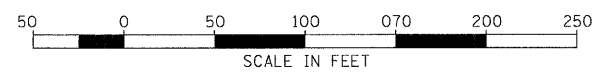
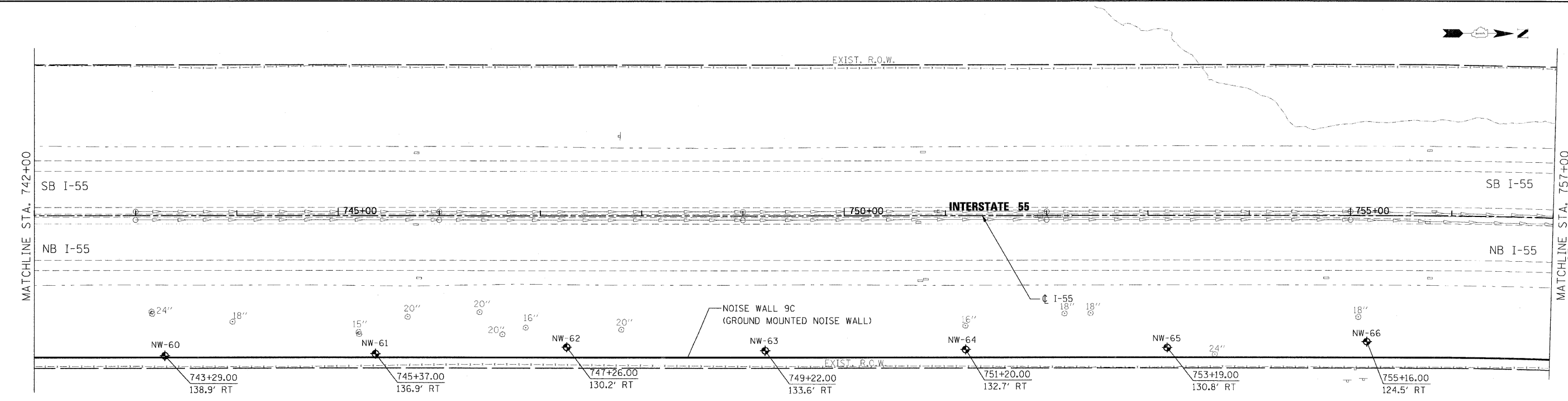
MATCHLINE STA. 727+00
SEE BOR-04

MATCHLINE STA. 742+00



MATCHLINE STA. 742+00

MATCHLINE STA. 757+00
SEE BOR-06



| REVISIONS | |
|-----------|------|
| NAME | DATE |
| | |
| | |
| | |
| | |
| | |
| | |
| | |
| | |
| | |

ILLINOIS DEPARTMENT OF TRANSPORTATION
 FAI ROUTE 55
 US 30 (PLAINFIELD ROAD) TO WEBER ROAD
 NOISE WALL PLAN & BORING
 LOCATIONS
 NOISE WALL 9C

SCALE: 1" = 50'
 DATE: 6-12-09

DRAWN BY: MMS
 CHECKED BY: DM



FINAL