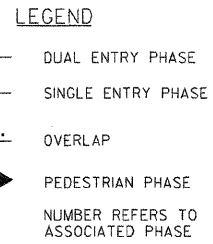
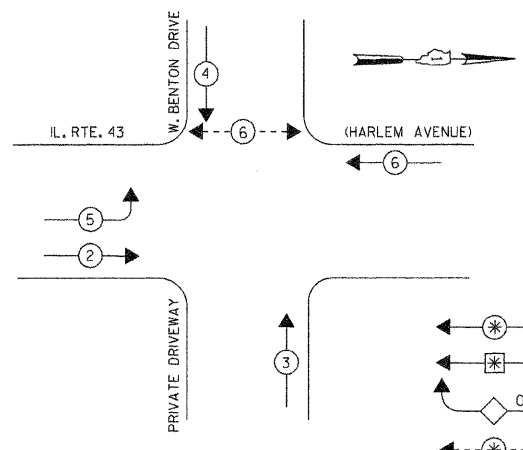
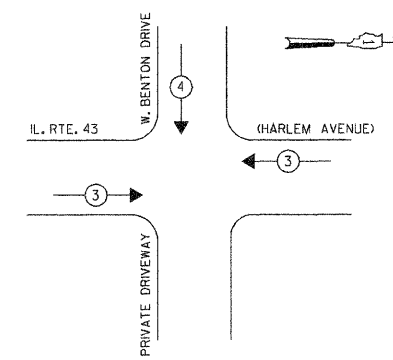


PHASE DESIGNATION DIAGRAM



CONTROLLER SEQUENCE

EMERGENCY VEHICLE PREEMPTION SEQUENCE



PROPOSED EMERGENCY VEHICLE PREEMPTORS		
EMERGENCY VEHICLE PREEMPTOR	3	4
MOVEMENT	←	↓

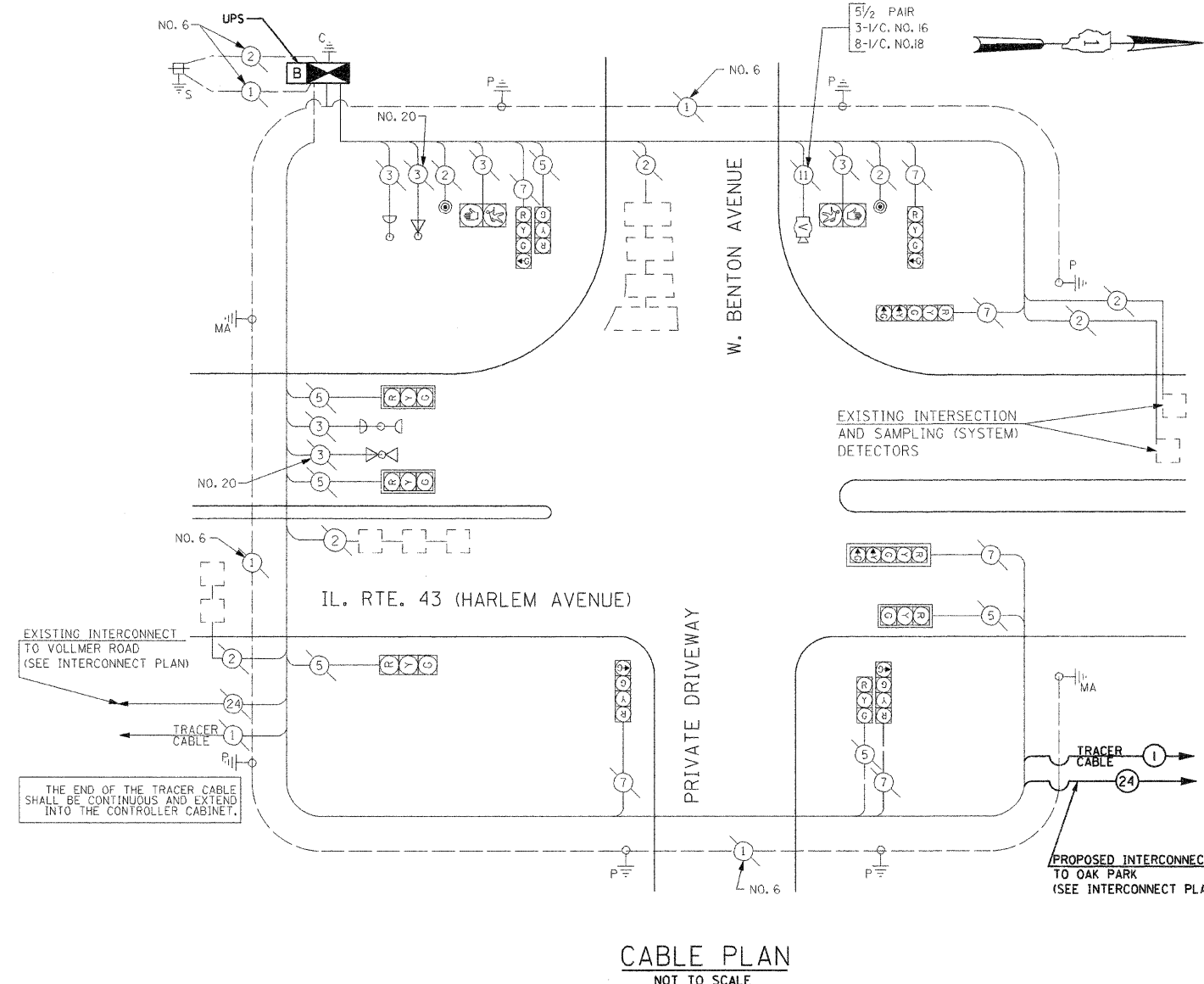
THE TRAFFIC SIGNAL CONTROL EQUIPMENT FOR THIS PROJECT SHALL BE "ECONOLITE" TO MATCH THE EXISTING ADJACENT SYSTEM.

FOUNDATION (DEPTH)	FT. (m)	CABLE SLACK	FT. (m)	VERTICAL	FT. (m)
TYPE A-POST	4 (1.2)	HANDHOLE	6.5 (2.0)	ALL FOUNDATIONS	3.5 (1.0)
D-CONTROLLER	4 (1.2)	DOUBLE HANDHOLE	13 (4.0)	MAST ARM (L) POLE	20'±L-2'±
E-MAST ARM POLE		SIGNAL POST	2 (0.6)		(6m±L-0.6m)±
24" (600mm)	10 (3.0)	CONTROLLER CAB.	1 (0.3)	BRACKET MOUNTED	13 (4.0)
30" (750mm)	15 (4.6)	FIBER OPTIC	13 (4.0)	PED. PUSHBUTTON	4 (1.2)
		ELECTRIC SERVICE	1 (0.3)	ELECTRIC SERVICE	13.5 (4.1)
		GROUND CABLE	1 (0.3)	SERVICE TO GROUND	13.5 (4.1)
				POST MOUNTED	6 (1.8)

I.D.O.T. TRAFFIC SIGNAL INSTALLATION ELECTRICAL SERVICE REQUIREMENTS

TYPE	NO LAMPS	WATTAGE	% OPERATION	TOTAL WATTAGE
SIGNAL (RED)	12	135	0.50	102.0
	12	135	0.25	75.0
	12	135	0.25	45.0
ARROW	8	135	0.10	9.6
PED. SIGNAL	2	90	1.00	50.0
CONTROLLER	1	100	1.00	100.0
ILLUM. SIGN			0.05	
FLASHER			0.50	
TOTAL =				381.6

ENERGY COSTS TO:
ILLINOIS DEPARTMENT OF TRANSPORTATION
201 WEST CENTER COURT
SCHAUMBURG, ILLINOIS 60196-1096
ENERGY SUPPLY CONTACT: Ms. DOLORES KREMNITZER
PHONE: (815) 724-5241
COMPANY: COMED-EDISON



CABLE PLAN
NOT TO SCALE

CABLE PLAN LEGEND

- | EXISTING | PROPOSED | |
|----------|----------|---|
| ⊙ | ⊙ | 8" (200mm) TRAFFIC SIGNAL SECTION |
| ⊙ | ⊙ | 12" (300mm) TRAFFIC SIGNAL SECTION |
| ⊙ | ⊙ | 12" (300mm) PEDESTRIAN SIGNAL SECTION |
| ⊙ | ⊙ | 12" (300mm) PEDESTRIAN SIGNAL SECTION |
| ⊙ | ⊙ | CONTROLLER CABINET |
| ⊙ | ⊙ | SERVICE INSTALLATION |
| ⊙ | ⊙ | TELEPHONE INSTALLATION |
| ⊙ | ⊙ | VEHICLE DETECTOR, INDUCTION LOOP |
| ⊙ | ⊙ | MAGNETIC DETECTOR |
| ⊙ | ⊙ | EMERGENCY VEHICLE LIGHT DETECTOR |
| ⊙ | ⊙ | CONFIRMATION BEACON |
| ⊙ | ⊙ | PUSH-BUTTON DETECTOR |
| ⊙ | ⊙ | ⊙ DENOTES NUMBER OF CONDUCTORS, ALL CABLE NO. 14 EXCEPT AS INDICATED. ALL LOOP DETECTOR CABLE TO BE SHIELDED. |
| ⊙ | ⊙ | ⊙ GROUND CABLE IN CONDUIT NO. 6 SOLID COPPER (GREEN) |
| ⊙ | ⊙ | ⊙ FIBER OPTIC CABLE IN CONDUIT NO. 62.5/125 2-MMI2F & SMI2F |
| ⊙ | ⊙ | ⊙ SIGNAL FACE WITH BACKPLATE. "P" INDICATES PROGRAMMED HEAD. |
| ⊙ | ⊙ | ⊙ RAILROAD CONTROL CABINET |
| ⊙ | ⊙ | ⊙ ILLUMINATED SIGN, FIBER OPTIC "NO LEFT TURN" |
| ⊙ | ⊙ | ⊙ ILLUMINATED SIGN, FIBER OPTIC "NO RIGHT TURN" |
| H/C | H/C | GROUND ROD AT HANDHOLE, DOUBLE HANDHOLE, OR CONTROLLER |
| P | P | GROUND ROD AT POST OR MAST ARM POLE |
| S | S | GROUND ROD AT ELECTRIC SERVICE INSTALLATION |
| ⊙ | ⊙ | ⊙ VIDEO DETECTION CAMERA (SINGLE) |
| ⊙ | ⊙ | ⊙ UPS - BATTERY BACK-UP SYSTEM |

SCHEDULE OF QUANTITIES

QTY	UNIT	ITEM DESCRIPTION
1	EACH	MAINTENANCE OF EXISTING TRAFFIC SIGNAL INSTALLATION
1	EACH	FULL-ACTUATED CONTROLLER AND TYPE IV CABINET, SPECIAL
1	EACH	UNINTERRUPTABLE POWER SUPPLY
1	EACH	TRANSCIVER-FIBER OPTIC
1	EACH	REMOVE EXISTING TRAFFIC SIGNAL EQUIPMENT
1	EACH	RE-OPTIMIZE TRAFFIC SIGNAL SYSTEM LEVEL 2
5	EACH	INDUCTIVE LOOP DETECTOR
1	EACH	DRILL EXISTING HANDHOLE