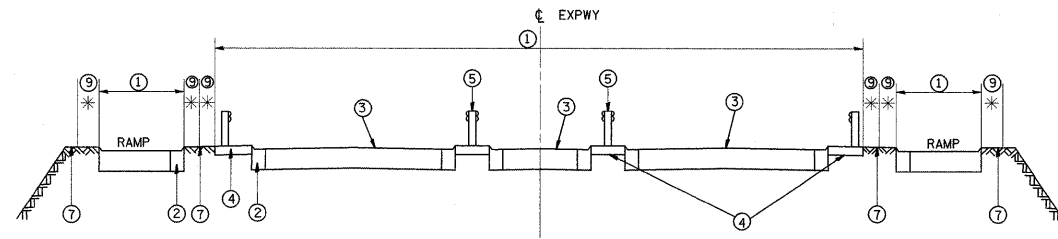
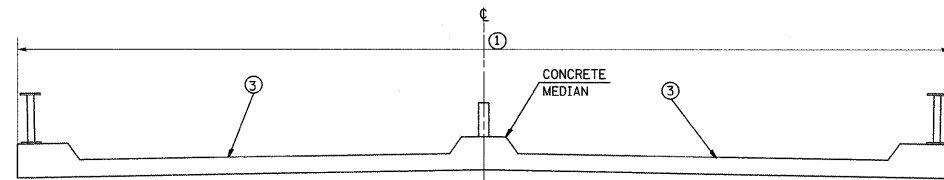


F.A. RTE.	SECTION	COUNTY	TOTAL SHEETS	SHEET NO.
VAR.	2009-041 I	*	26	4
STA.	TO STA.			
FED. ROAD DIST. NO.	ILLINOIS	FED. AID PROJECT		

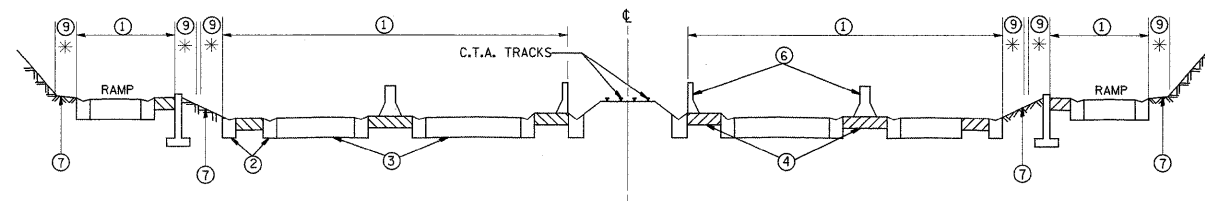
*COOK, DU PAGE, KANE, LAKE, MC HENRY AND WILL



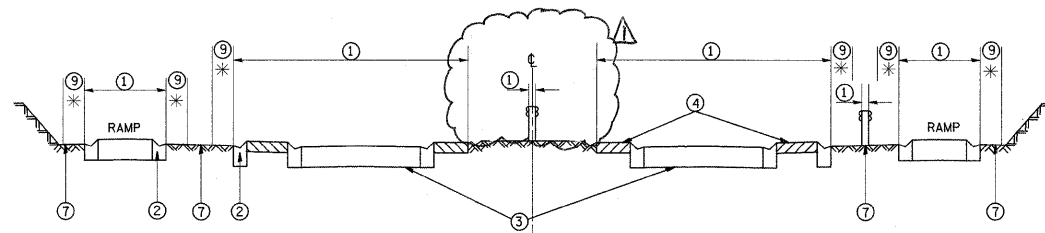
TYPICAL EXPRESSWAY CROSS-SECTION NO. 1



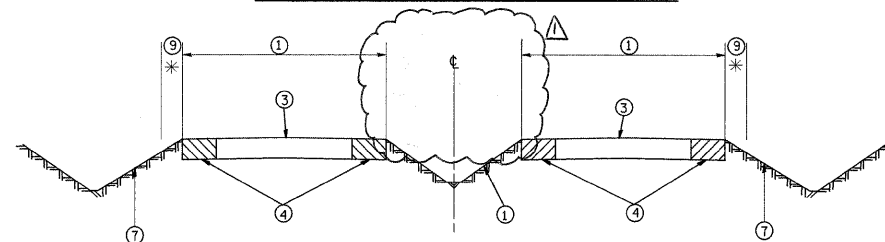
TYPICAL CROSS-SECTION OF ELEVATED ROADWAY
TYPICAL EXPRESSWAY CROSS-SECTION NO. 2



TYPICAL EXPRESSWAY CROSS-SECTION NO. 3



TYPICAL EXPRESSWAY CROSS-SECTION NO. 4



TYPICAL EXPRESSWAY CROSS-SECTION NO. 5

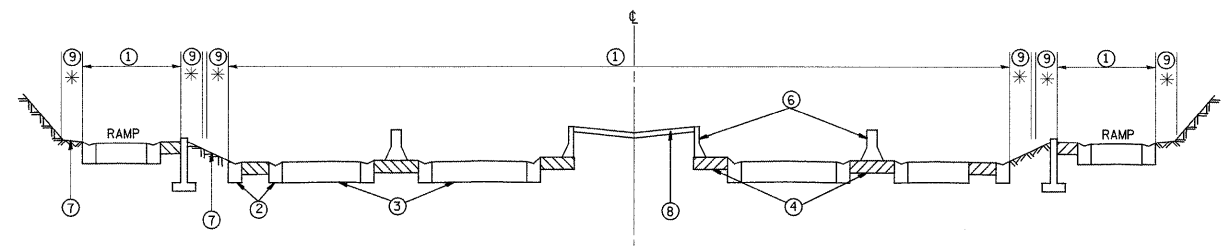
LEGEND

- ① AREA OF ROADWAY CLEANING AND RUBBISH REMOVAL
- ② CURB AND GUTTER
- ③ TRAVELED ROADWAY
- ④ STABILIZED SHOULDER OR MEDIAN
- ⑤ STEEL PLATE GUARD RAIL
- ⑥ CONCRETE BARRIER
- ⑦ NON STABILIZED SURFACE
- ⑧ RAISED CONCRETE MEDIAN
- ⑨ LITTER PICKING

NOTE: SLOPE WALLS UNDER BRIDGES ARE NOT INCLUDED IN AREAS TO BE CLEANED. DEBRIS SHALL BE REMOVED FROM ALL STABILIZED AREAS AND UNDER ALL GUARDRAIL.

LEGEND

*: 10' (TYP.)



TYPICAL EXPRESSWAY CROSS-SECTION NO. 6

REVISIONS	
NAME	DATE

ILLINOIS DEPARTMENT OF TRANSPORTATION

TYPICAL EXPRESSWAY CROSS-SECTIONS

SCALE: VERT. DATE
HORIZ.

DRAWN BY
CHECKED BY

Rev. 7-21-09