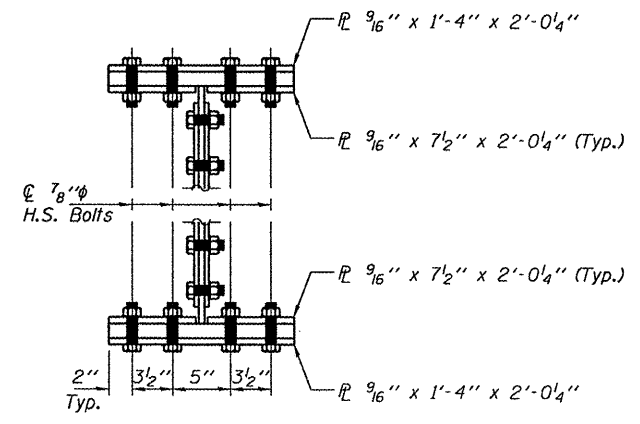
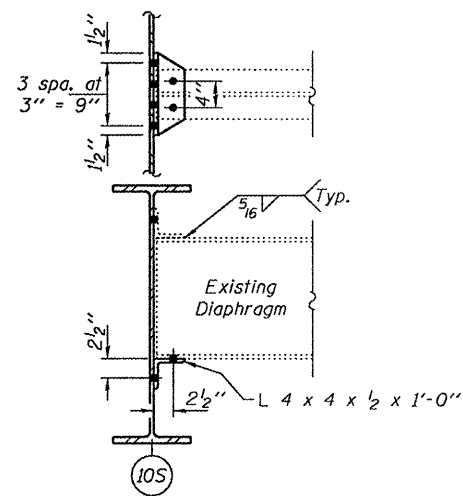
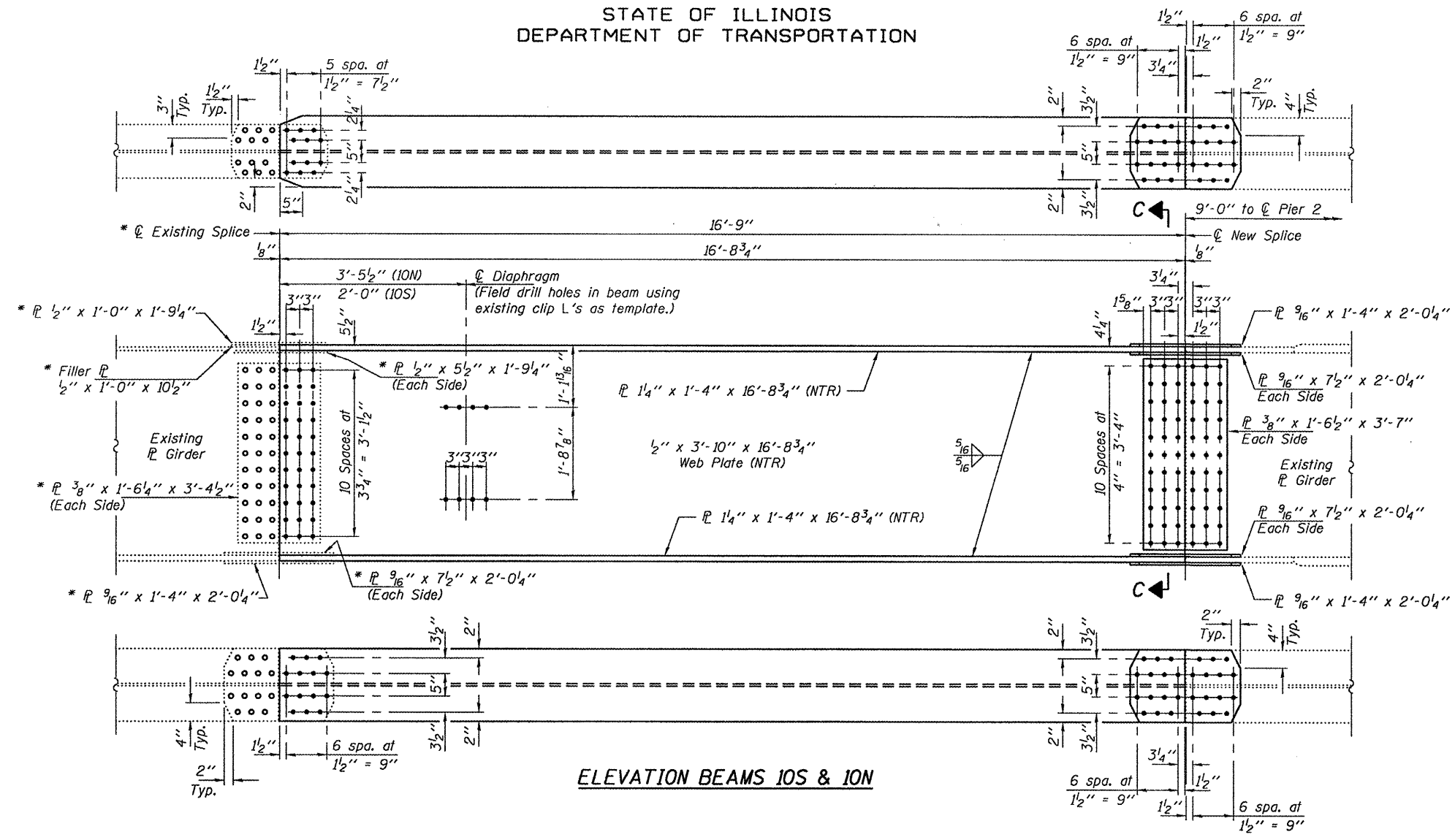


STATE OF ILLINOIS  
DEPARTMENT OF TRANSPORTATION

\* Use new flange and web splice L's at Beam 10S. Use existing flange and web splice L's at Beam 10N and use existing L's as template to field drill holes into new beam.



DESIGNED	AJB
CHECKED	ATH
DRAWN	Kyle M. Steffen
CHECKED	AJB ATH

JUNE 18, 2009  
EXAMINED *Carl Krueger*  
ENGINEER OF STRUCTURAL SERVICES  
PASSED *Ralph E. Anderson*  
ENGINEER OF BRIDGES AND STRUCTURES

**BEAM REPLACEMENT DETAILS**  
SN 022-0096 & 0097

SHEET NO. 2 2 SHEETS	F.A.I. RTE.	SECTION	COUNTY	TOTAL SHEETS	SHEET NO.
	290	22-2HB-1-F	DuPAGE	4	4
FED. ROAD DIST. NO.			ILLINOIS FED. AID PROJECT		
CONTRACT NO. 60H71					