

STATE OF ILLINOIS  
 DEPARTMENT OF TRANSPORTATION  
 DIVISION OF HIGHWAYS

**PROPOSED HIGHWAY PLANS**

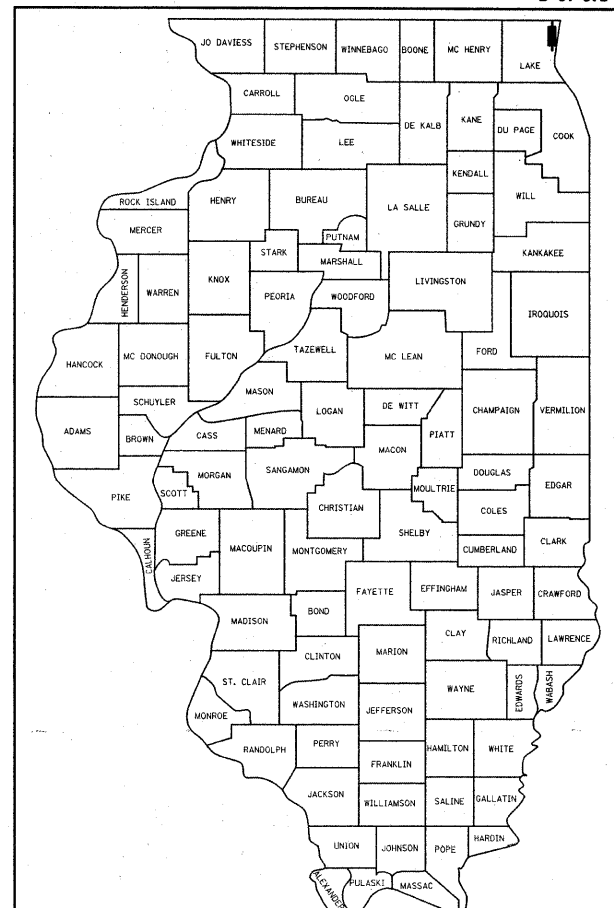
F.A.P. ROUTE 352: ILL RTE. 137  
 SECTION: (E.M.D) RS-4  
 BLANCHARD RD. TO RUSSELL RD.  
 RESURFACING  
 LAKE COUNTY  
 C-91-372-02

F.A.P. RTE.	SECTION	COUNTY	TOTAL SHEETS	SHEET NO.
352	(E.M.D) RS-4	LAKE	1/1	1
FED. ROAD DIST. NO.	ILLINOIS	CONTRACT NO. 62545		

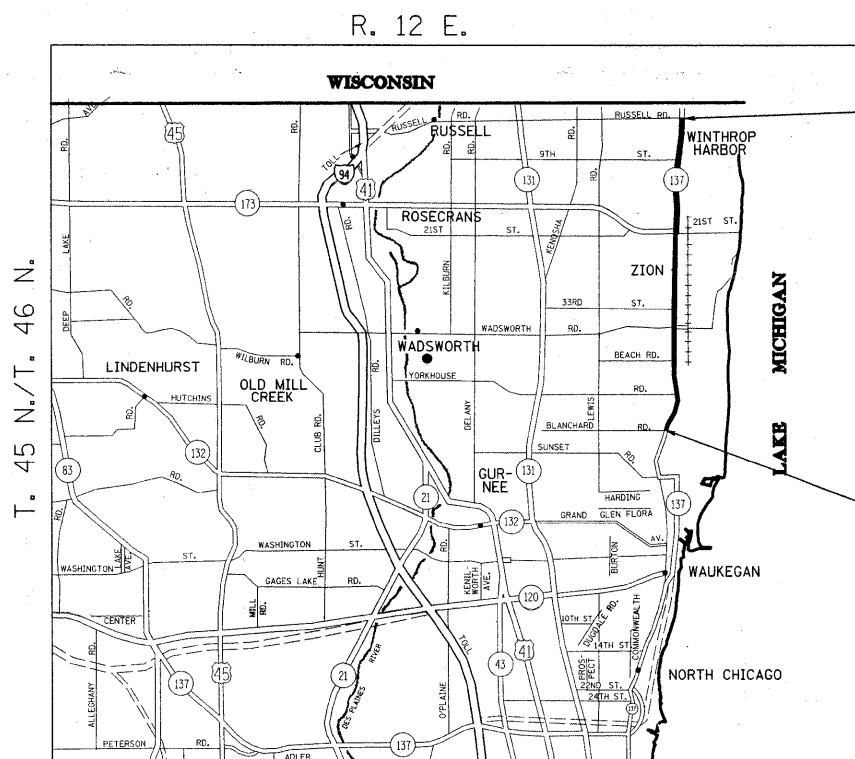
FOR INDEX OF SHEETS, SEE SHEET NO. 2

THE IMPROVEMENT IS LOCATED IN THE CITY OF ZION AND IN THE VILLAGES OF WINTHROP HARBOR AND BEACH PARK

D-91-372-02



LOCATION OF SECTION INDICATED THIS: - [black bar] -



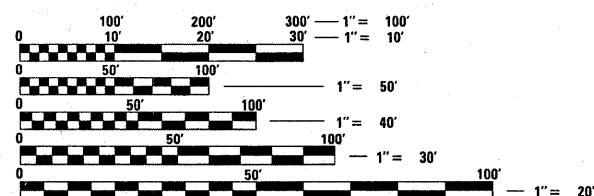
IMPROVEMENT ENDS  
 STA. 499 + 88

IMPROVEMENT BEGINS  
 STA. 155 + 72

TRAFFIC DATA  
 2006 ADT = 18,800  
 SPEED LIMIT = 40 MPH

BENTON-ZION & WAUKEGAN TOWNSHIPS

GROSS & LENGTH OF IMPROVEMENT = 34,416 LIN. FT. = 6.52 MILES



FULL SIZE PLANS HAVE BEEN PREPARED USING STANDARD ENGINEERING SCALES. REDUCED SIZED PLANS WILL NOT CONFORM TO STANDARD SCALES. IN MAKING MEASUREMENTS ON REDUCED PLANS, THE ABOVE SCALES MAY BE USED.

J.U.L.I.E.  
 JOINT UTILITY LOCATION INFORMATION FOR EXCAVATION  
 1-800-892-0123  
 OR 811

PROJECT ENGINEER - DAN WILGREEN (847) 705-4240  
 PROJECT MANAGER - KEN ENG (847) 705-4247

CONTRACT NO. 62545

STATE OF ILLINOIS  
 DEPARTMENT OF TRANSPORTATION  
 DIVISION OF HIGHWAYS

SUBMITTED APRIL 20, 2009  
Diane M. O'Keefe 95  
 DEPUTY DIRECTOR OF HIGHWAYS, REGION ENGINEER

May 1, 2009  
Charles J. Ingersoll RD  
 ENGINEER OF DESIGN AND ENVIRONMENT

May 1, 2009  
Christina M. Reed RD  
 DIRECTOR OF HIGHWAYS, CHIEF ENGINEER

PRINTED BY THE AUTHORITY  
 OF THE STATE OF ILLINOIS