

INDEX OF SHEETS

FOR INDEX OF SHEETS, SEE SHEET NO. 2

DAN RYAN EXPRESSWAY:	ADT (2010)	DESIGN SPEED	POSTED SPEED
NB I-94 (DAN RYAN)	151,800	60 MPH	55 MPH
NB I-57	57,300	60 MPH	55 MPH
NB 95TH STREET ENTRANCE RAMP	10,500	45 MPH	40 MPH

MAJOR CROSS STREETS AND FRONTAGE ROADS:

	ADT	POSTED SPEED
95TH STREET	23,800	30 MPH
S. STATE STREET	15,100	30 MPH

DESCRIPTION OF PROJECT

CONSTRUCTION OF FLUTED KNEE WALLS, FLUTED PARAPET ON EXISTING RETAINING WALL LOCATED WITHIN THE PROJECT LIMITS.

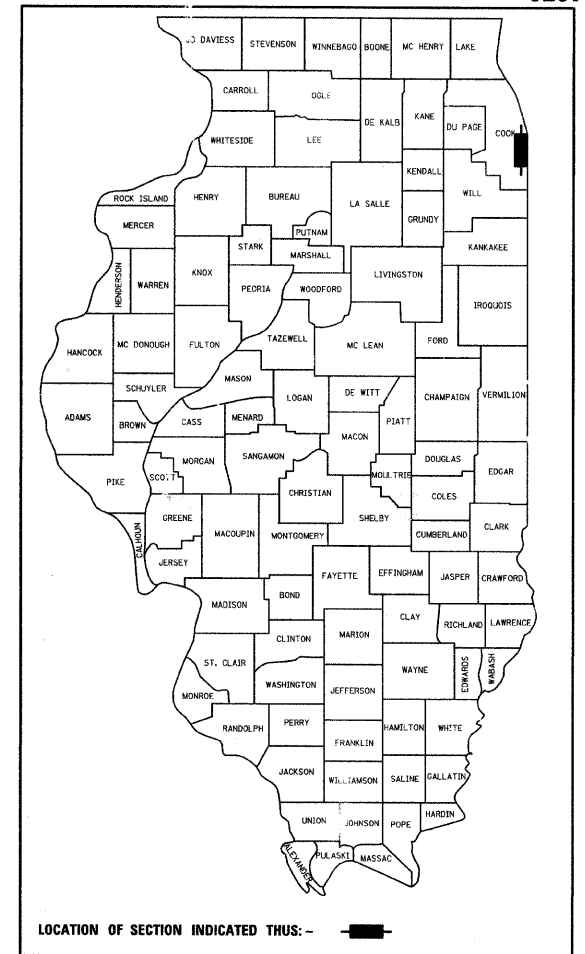
**STATE OF ILLINOIS
DEPARTMENT OF TRANSPORTATION
DIVISION OF HIGHWAYS**

PROPOSED HIGHWAY PLANS

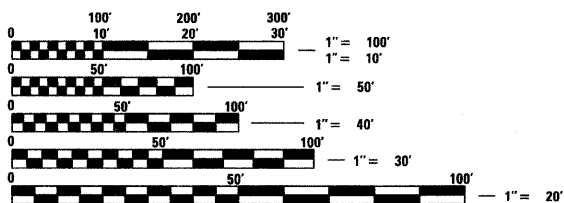
**F.A.I. ROUTE 94 (DAN RYAN EXPRESSWAY)
SECTION 1516.1 I-7
FLUTED KNEE WALL CONSTRUCTION
ALONG STATE STREET FROM 95TH STREET TO 89TH STREET
COOK COUNTY
C-91-229-05**

F.A.I. RTE.	SECTION	COUNTY	TOTAL SHEETS	SHEET NO.
94	1516.1 I-7	COOK	58	1

FED. ROAD DIST. NO. ILLINOIS FED. AID PROJECT D-91-229-05 62971



PROJECT LOCATED IN THE CITY OF CHICAGO

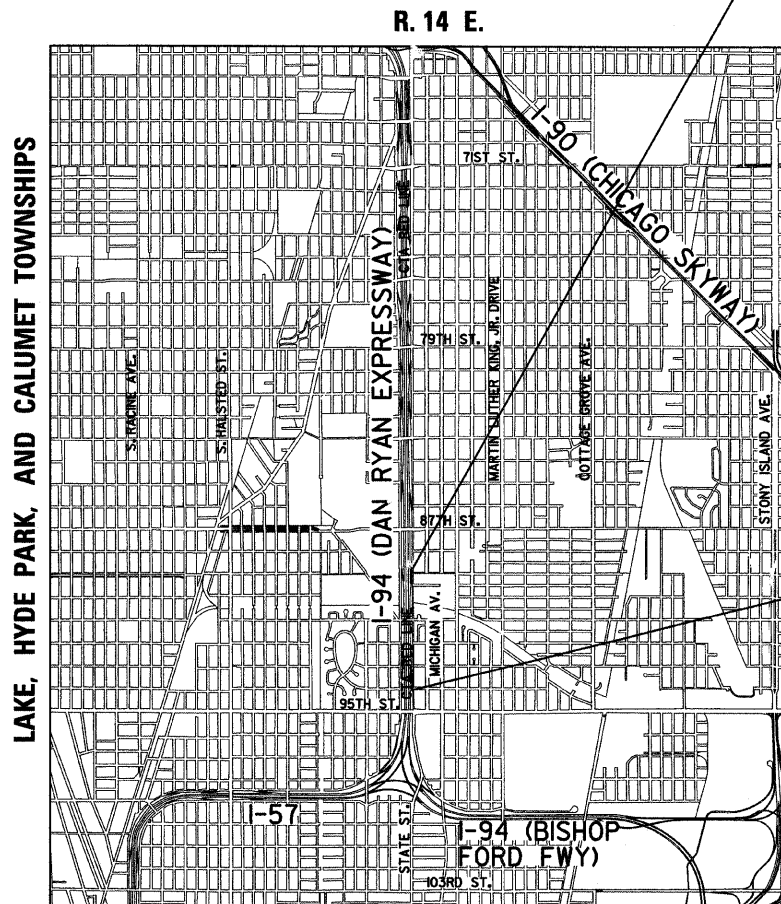


FULL SIZE PLANS HAVE BEEN PREPARED USING STANDARD ENGINEERING SCALES; REDUCED SIZED PLANS WILL NOT CONFORM TO STANDARD SCALES. IN MAKING MEASUREMENTS ON REDUCED PLANS, THE ABOVE SCALES MAY BE USED

DIGGER:
CHICAGO UTILITY ALERT NETWORK
(312) 744-7000

CTA CONTACT:
DAVID HEARD,
MANAGER, CONSTRUCTION
MANAGEMENT OVERSIGHT
(312) 681-3862

CONTRACT NO. 62971



F.A.I. 94 (RYAN) PROJECT LIMIT
STA. 2243+03.23 (NB I-94)

F.A.I. 94 (RYAN) PROJECT LIMIT
STA. 2212+06.20 (NB I-94)

LOCATION MAP

0 1/2 MILE 1 MILE
GROSS LENGTH OF PROJECT = 3097.03 FT. = 0.59 MI.
MAP SCALE: 1" = 1/2 MILE
NET LENGTH OF PROJECT = 3097.03 FT. = 0.59 MI.

**STATE OF ILLINOIS
DEPARTMENT OF TRANSPORTATION
DIVISION OF HIGHWAYS**

SUBMITTED October 9, 2008

Devin M. O'Keefe
DEPUTY DIRECTOR OF HIGHWAYS, REGION ENGINEER

June 26, 2009
Charles J. Ingersoll
ENGINEER OF DESIGN AND ENVIRONMENT

June 26, 2009
Christine M. Reed
DIRECTOR OF HIGHWAYS, CHIEF ENGINEER

CONTRACT 25B

Signed Dean A. Kieseling
REGISTERED PROFESSIONAL ENGINEER OF ILLINOIS
Date October 7, 2008
Expires 11-30-2009

TYLIN INTERNATIONAL
PRINTED BY THE AUTHORITY OF THE STATE OF ILLINOIS

DISTRICT ONE DESIGN / PROJECT MANAGER:
BRIAN KUTTAB (847) 705 - 4431