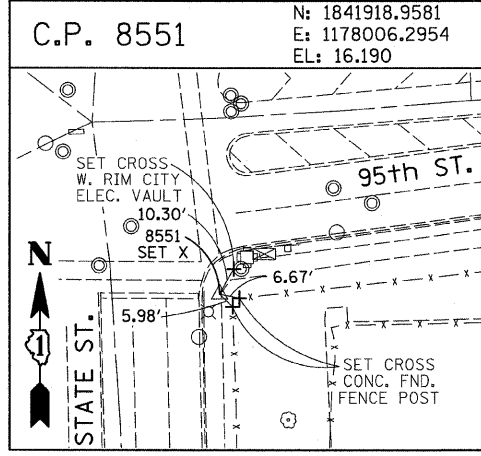
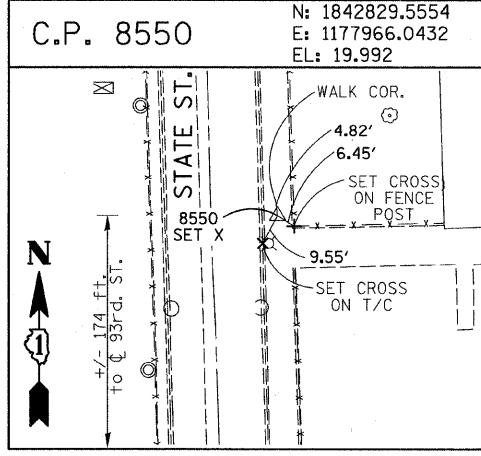
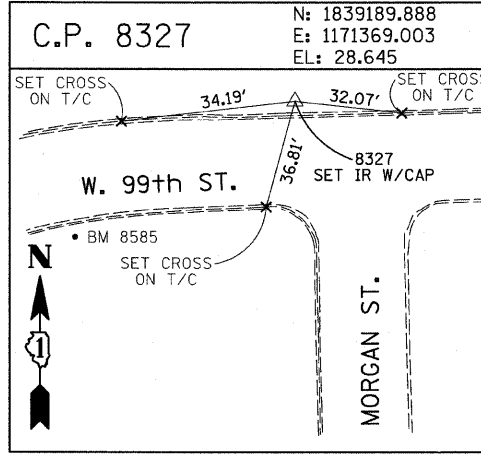
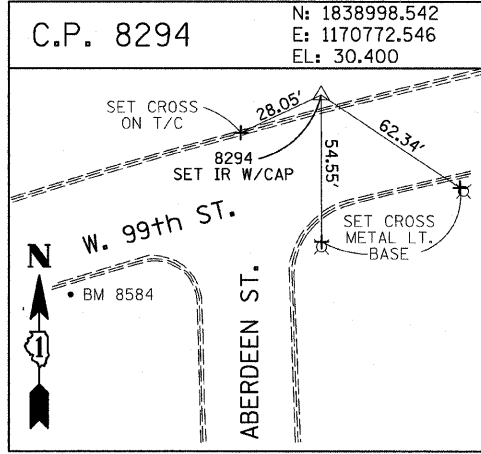
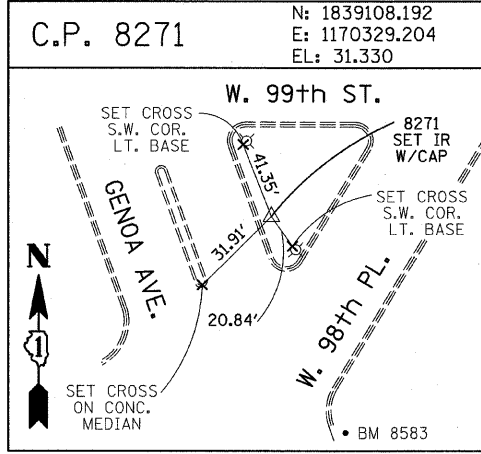
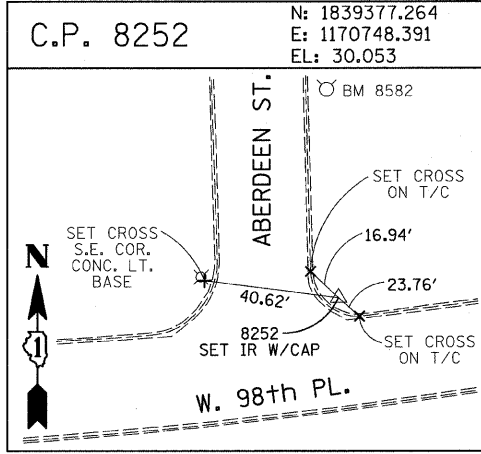
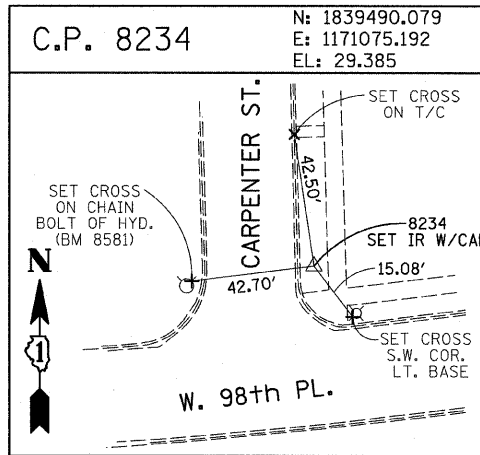
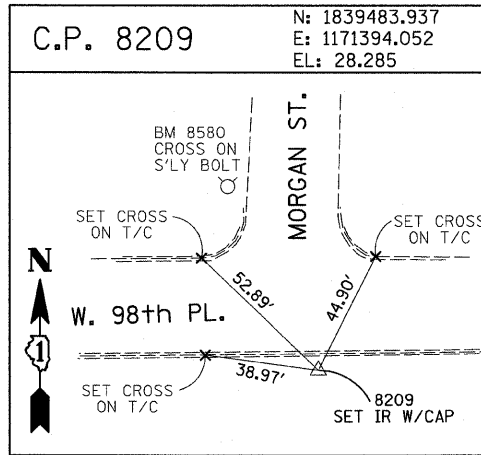
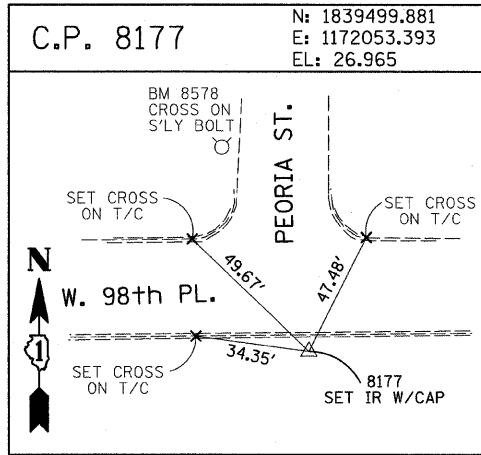
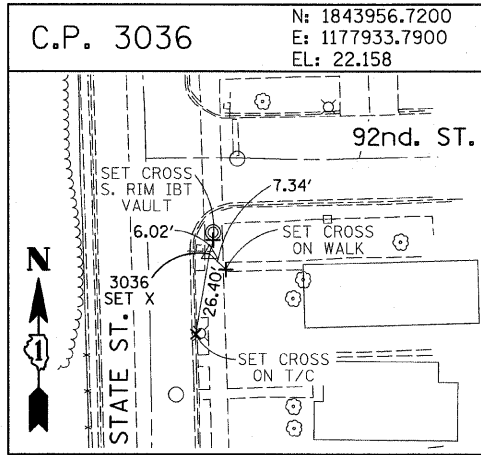
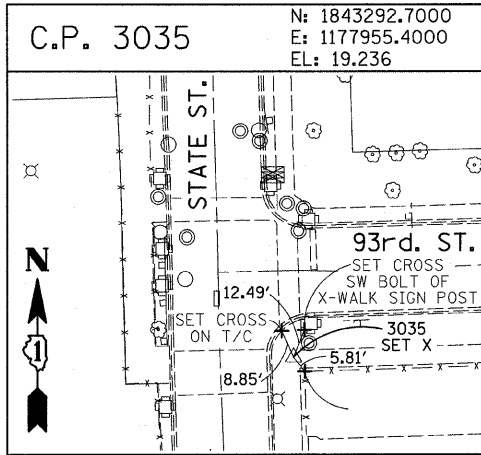
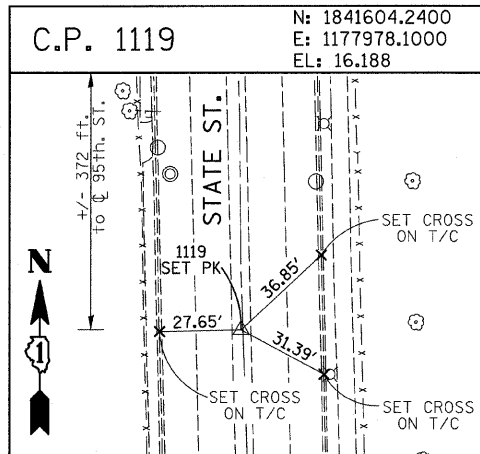
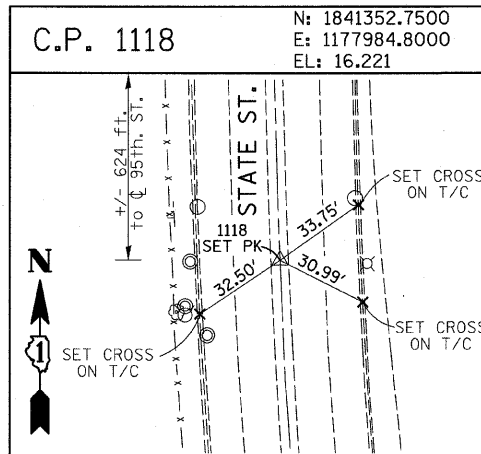
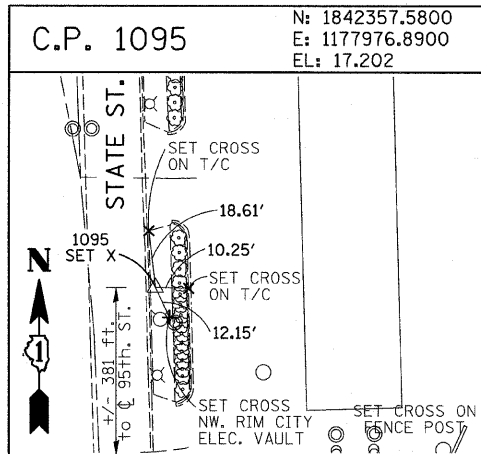
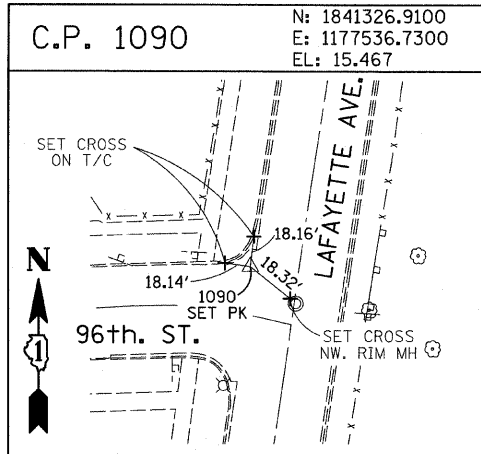
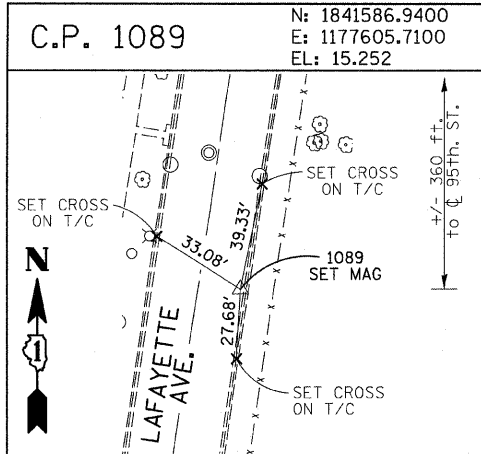


F.A.I. RTE.	SECTION	COUNTY	TOTAL SHEETS	SHEET NO.
94	1516.1 I-7	COOK	58	16
STA. 2212+06.20		TO STA. 2243+03.23		
FED. ROAD DIST. NO.		ILLINOIS FED. AID PROJECT		
62971				



**American Surveying Consultants, P.C.**  
 1827 Plank Rd., Chicago, IL 60611 800 S. Northwest Highway, Elmhurst, IL 60120  
 (708) 421-1111

REVISIONS	
NAME	DATE

ILLINOIS DEPARTMENT OF TRANSPORTATION  
 F.A.I. 94 (DAN RYAN EXPRESSWAY)  
 SURVEY TIES FOR CONTROL POINTS  
 SHEET 6 OF 7  
 SCALE: 1"=30'  
 DATE: OCTOBER 17, 2008  
 DRAWN BY: GSP  
 CHECKED BY: MMW

10/17/2008 10:17:53 AM