

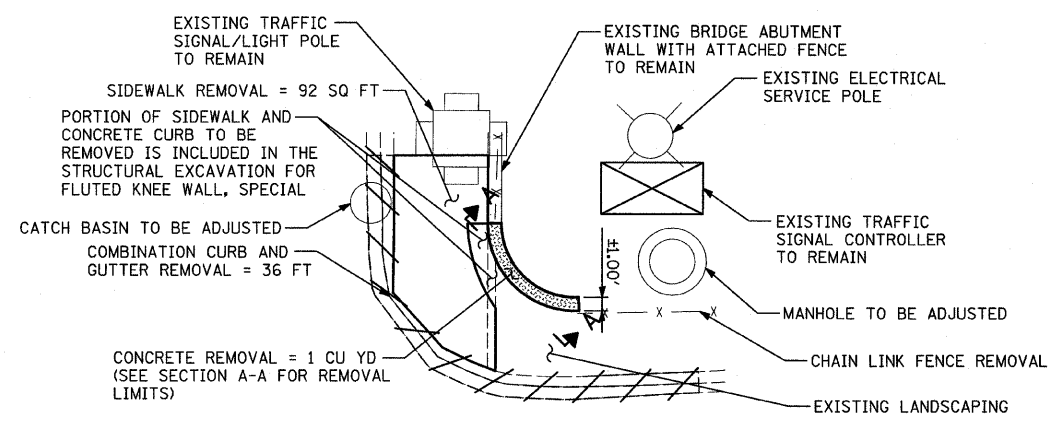
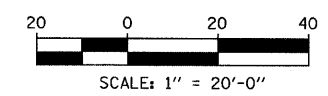
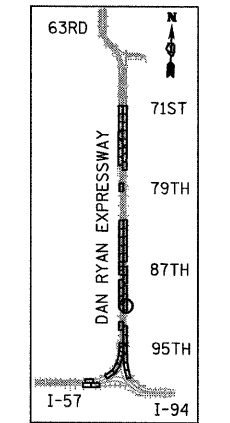
MATCHLINE NB STA. 2235+50.00

LEGEND:

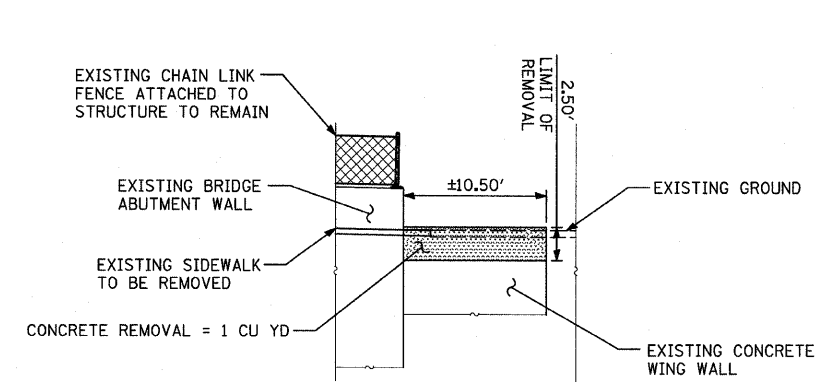
- PAVED SHOULDER REMOVAL
- COMB CONC CURB & GUTTER REMOVAL
- CHAIN LINK FENCE REMOVAL
- CONCRETE BARRIER/GUARDRAIL REMOVAL
- TREE REMOVAL (UNITS) (NO UNIT SHOWN = <6)

NOTE:

SIGNS SHALL BE RELOCATED AT A MINIMUM OF 3 FEET FROM THE FRONT FACE OF THE PROPOSED KNEE WALL OR MOUNTED TO THE FRONT FACE OF THE RECONSTRUCTED PARAPET. EXACT PLACEMENT SHALL BE DETERMINED BY THE ENGINEER, PAID FOR AS "RELOCATED EXISTING SIGN PANEL, SPECIAL".



DETAIL 1: INTERSECTION CORNER REMOVAL PLAN



SECTION A-A: EXPANDED CROSS SECTION - EXISTING WALL CONCRETE REMOVAL PLAN

TYLIN INTERNATIONAL

REVISIONS	
NAME	DATE

ILLINOIS DEPARTMENT OF TRANSPORTATION
F.A.I. 94 (DAN RYAN EXPRESSWAY)
REMOVAL PLAN
NB I-94 (DAN RYAN EXPRESSWAY)
STA. 2230+00.00 TO 2235+50.00
 SCALE: 1"=20'
 DATE: OCTOBER 17, 2008
 DRAWN BY: AMB, MAF, TB
 CHECKED BY: TGB, MI