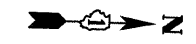


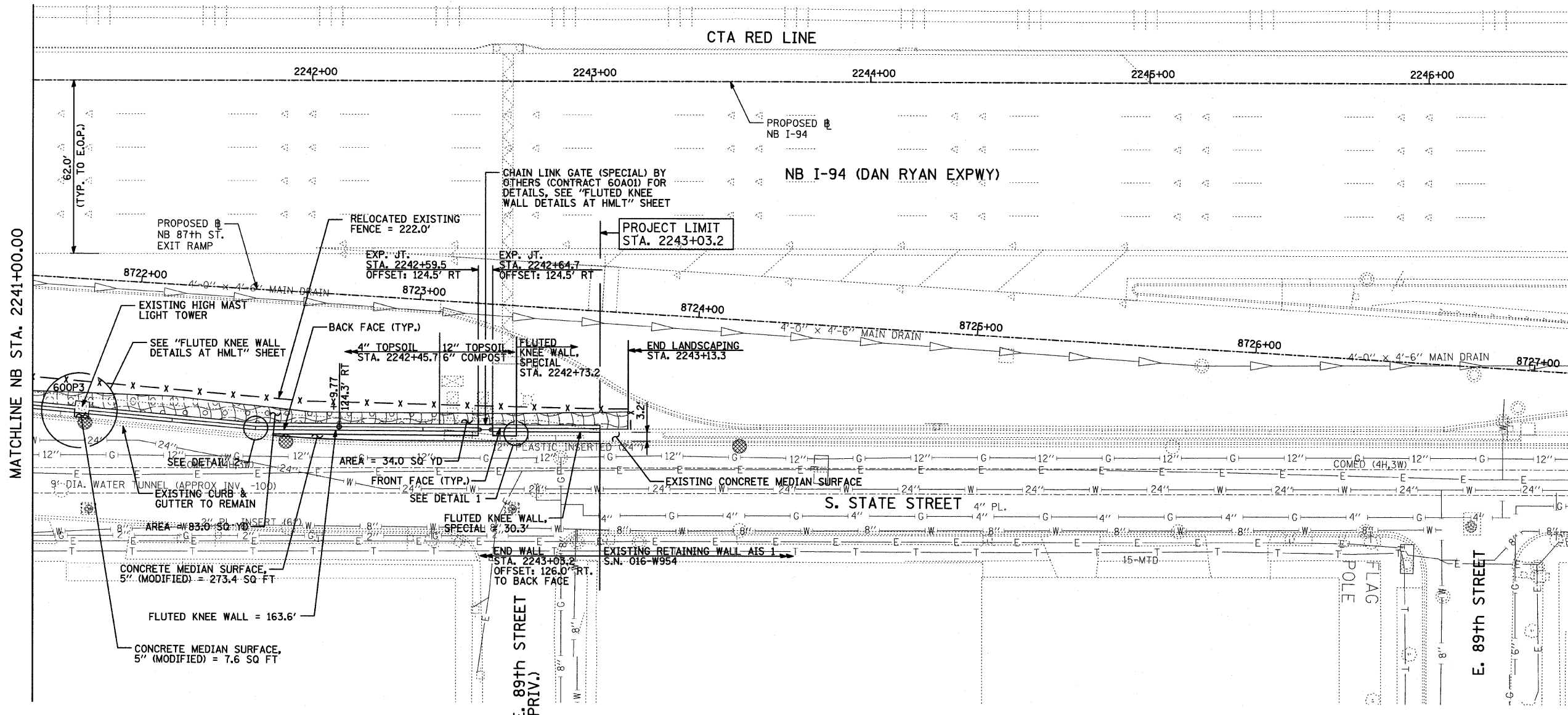
F.A.I. RTE.	SECTION	COUNTY	TOTAL SHEETS	SHEET NO.
94	1516.1 I-7	COOK	58	27
STA. 2212+06.20		TO STA. 2243+03.23		
FED. ROAD DIST. NO.	ILLINOIS	FED. AID PROJECT		

62971

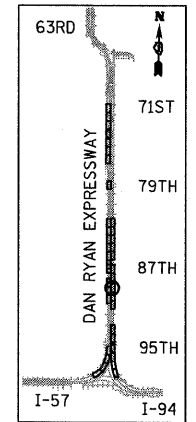


**LEGEND:**

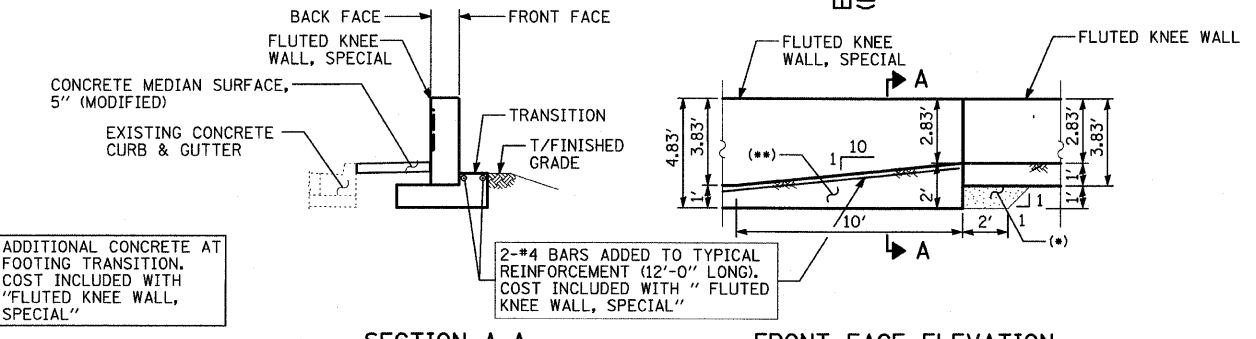
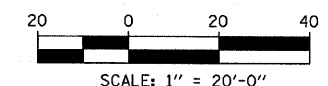
- EROSION CONTROL BLANKET, SEEDING, CLASS 2A, NITROGEN, PHOSPHORUS, AND POTASSIUM FERTILIZER NUTRIENTS, TOPSOIL FURNISH AND PLACE, 4"
- EROSION CONTROL BLANKET, SEEDING, CLASS 2A, NITROGEN, PHOSPHORUS, AND POTASSIUM FERTILIZER NUTRIENTS, TOPSOIL FURNISH AND PLACE, 12" COMPOST FURNISH AND PLACE, 6"
- INLET FILTER, TO BE INSTALLED IN OFF PROJECT DRAINAGE STRUCTURES ACCEPTING STORMWATER RUNOFF



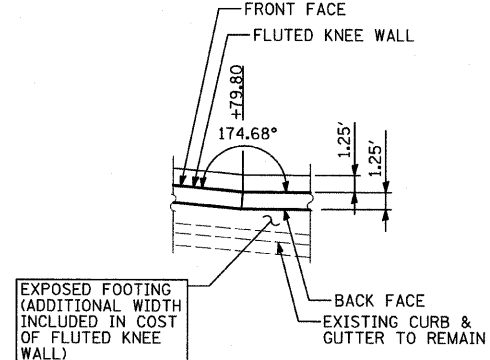
MATCHLINE NB STA. 2241+00.00



LOCATION MAP



**SECTION A-A**  
**FOOTING TRANSITION - DETAIL 1**  
(FROM FLUTED KNEE WALL, SPECIAL TO FLUTED KNEE WALL)



**DETAIL 2**

- ADDITIONAL CONCRETE AT FOOTING TRANSITION. COST INCLUDED WITH "FLUTED KNEE WALL, SPECIAL"
- CA-6 AGGREGATE FILL. COST INCLUDED WITH "FLUTED KNEE WALL"

**NOTES:**

1. STATION AND OFFSET CALLOUTS ALONG THE LENGTH OF EITHER FLUTED KNEE WALL OR FLUTED KNEE WALL, SPECIAL ARE TAKEN FROM THE FRONT FACE SIDE AT PROPOSED EXPANSION JOINT LOCATIONS.
2. THE CONTRACTOR SHALL PROTECT AND USE CAUTION DURING CONSTRUCTION OPERATIONS AROUND ALL EXISTING PUBLIC OR PRIVATE UTILITY FACILITIES.

REVISIONS	
NAME	DATE

ILLINOIS DEPARTMENT OF TRANSPORTATION  
F.A.I. 94 (DAN RYAN EXPRESSWAY)

**PROPOSED PLAN**  
NB I-94 (DAN RYAN EXPRESSWAY)  
STA. 2241+00.00 TO 2246+50.00

SCALE: 1"=20'  
DATE: OCTOBER 17, 2008

DRAWN BY: AMB, MAF  
CHECKED BY: TGB, MI

**TYLIN** INTERNATIONAL

10/17/2008 10:59:01 AM