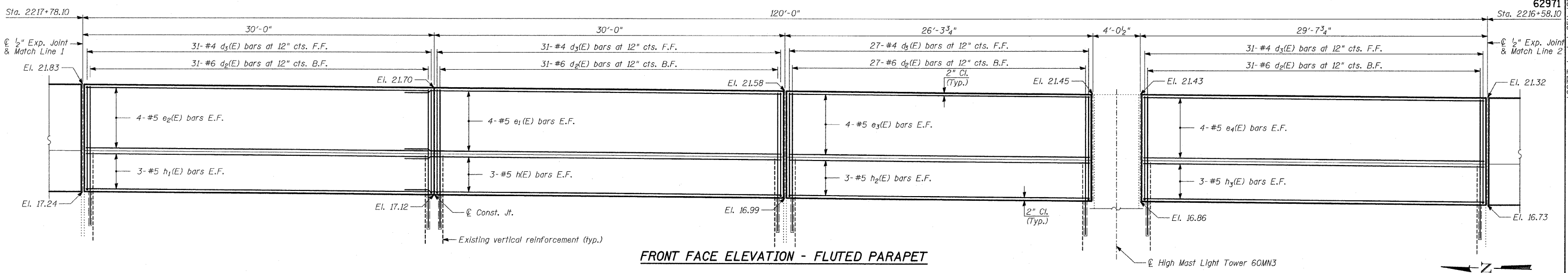
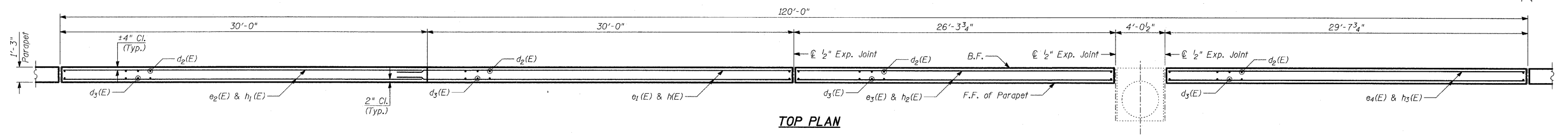


F.A.I. RTE.	SECTION	COUNTY	TOTAL SHEETS	SHEET NO.
94	1516.1 I-7	COOK	58	38
STA. 2212+06.20	TO STA. 2243+03.23			
FED. ROAD DIST. NO.	ILLINOIS	FED. AID PROJECT		

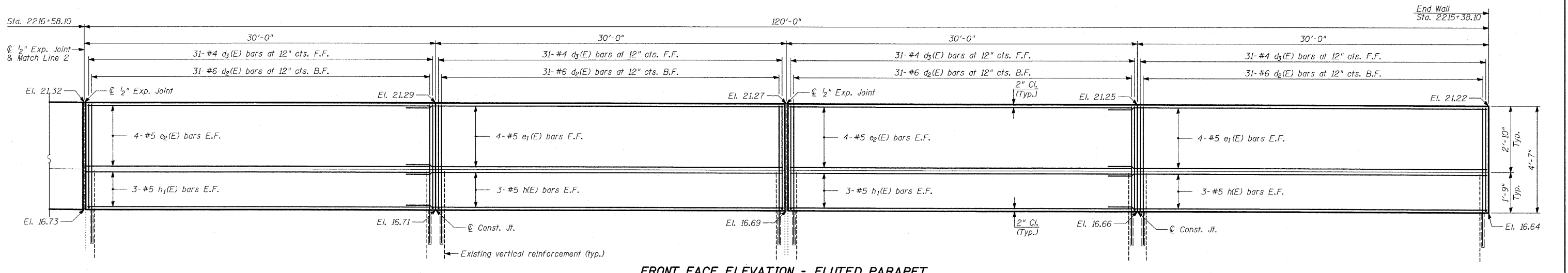
62971  
Sta. 2216+58.10



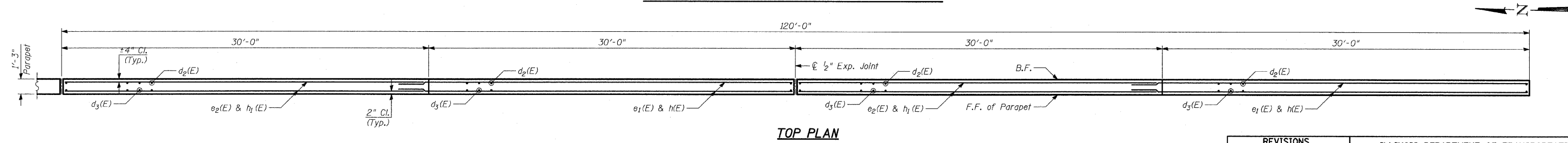
FRONT FACE ELEVATION - FLUTED PARAPET



TOP PLAN



FRONT FACE ELEVATION - FLUTED PARAPET



TOP PLAN

LAP SPLICES

Bar	Lap
#4	1'-8"
#5	2'-2"
#6	2'-7"

NOTES:

1. B.F. - denotes Back Face.
2. E.F. - denotes Each Face.
3. F.F. - denotes Front Face.
4. Work this sheet with Sheet 37.
5. For Construction and Expansion Joint Details, see "Fluted Knee Wall Standard Details".
6. For Bill of Material and Notes, see Sheet 37.

TYLIN INTERNATIONAL

REVISIONS	
NAME	DATE

ILLINOIS DEPARTMENT OF TRANSPORTATION  
 F.A.I. 94 (DAN RYAN EXPRESSWAY)  
 94TH ST. TO N. OF 89TH ST. (PRIVATE)  
 PARAPET RECONSTRUCTION  
 PLAN AND ELEVATION  
 STA. 2217+78.10 TO STA. 2215+38.10  
 S.N. DESIGNED BY: MI, TB  
 SCALE: N.T.S. DRAWN BY: TB  
 DATE: OCTOBER 17, 2008 CHECKED BY: MI

10/17/2008 11:33:51 AM