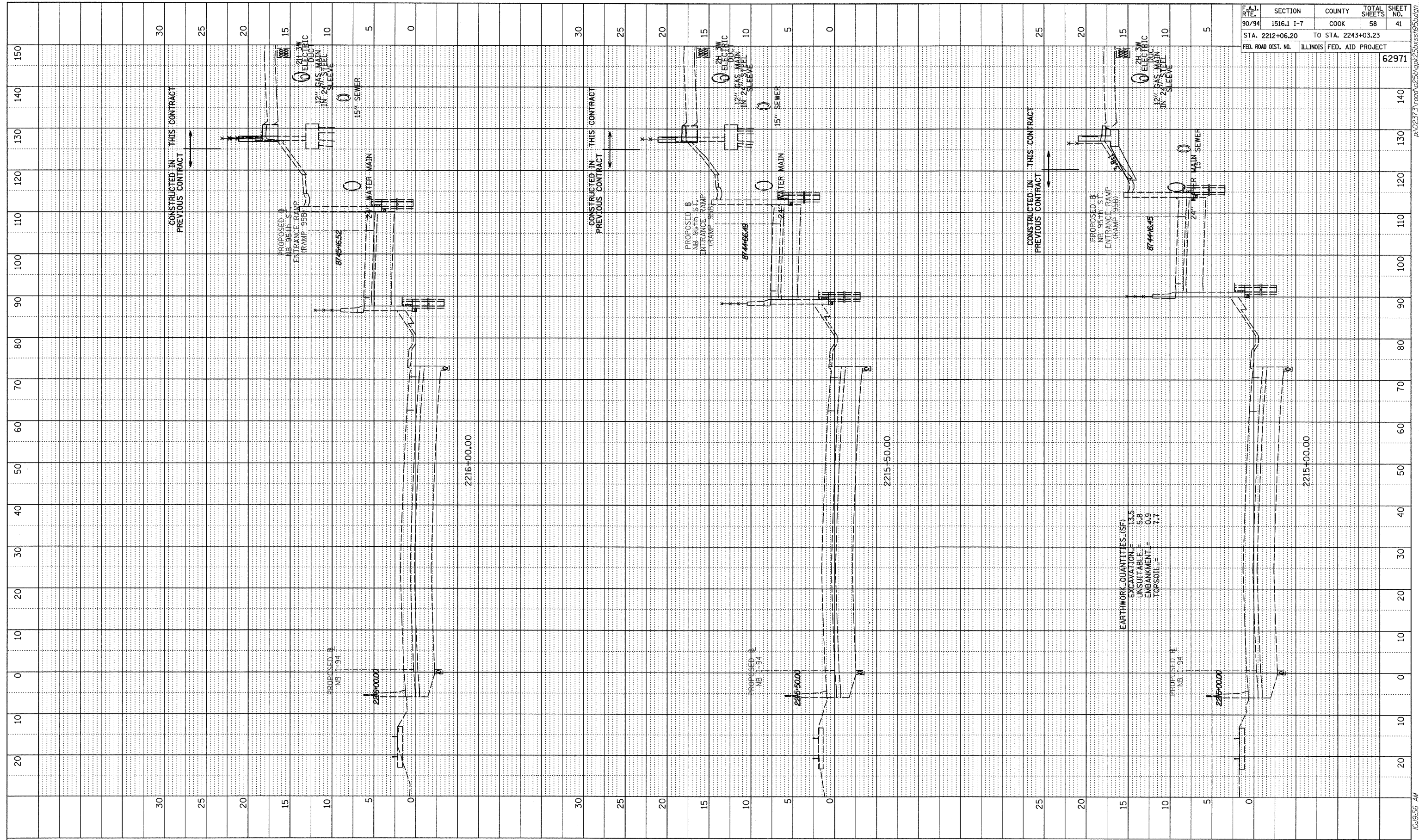
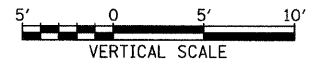
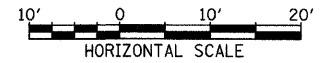


PROFILE SURVEYED BY DATE  
 GRADES CHECKED  
 NOTE BOOK NO. DATE  
 E.M. NOTED  
 STRUCTURE NOTATIONS CHECKED



F.A.I. RTE.	SECTION	COUNTY	TOTAL SHEETS	SHEET NO.
90/94	1516.1 I-7	COOK	58	41
STA. 2212+06.20		TO STA. 2243+03.23		
FED. ROAD DIST. NO.	ILLINOIS	FED. AID PROJECT		62971

TYLIN INTERNATIONAL



NB I-94 (DAN RYAN EXPRESSWAY)  
 STA. 2215+00 TO STA. 2216+00

10/17/2008 10:19:56 AM P:\02\27\3\road\25\p\pk25\ss\95b.dgn