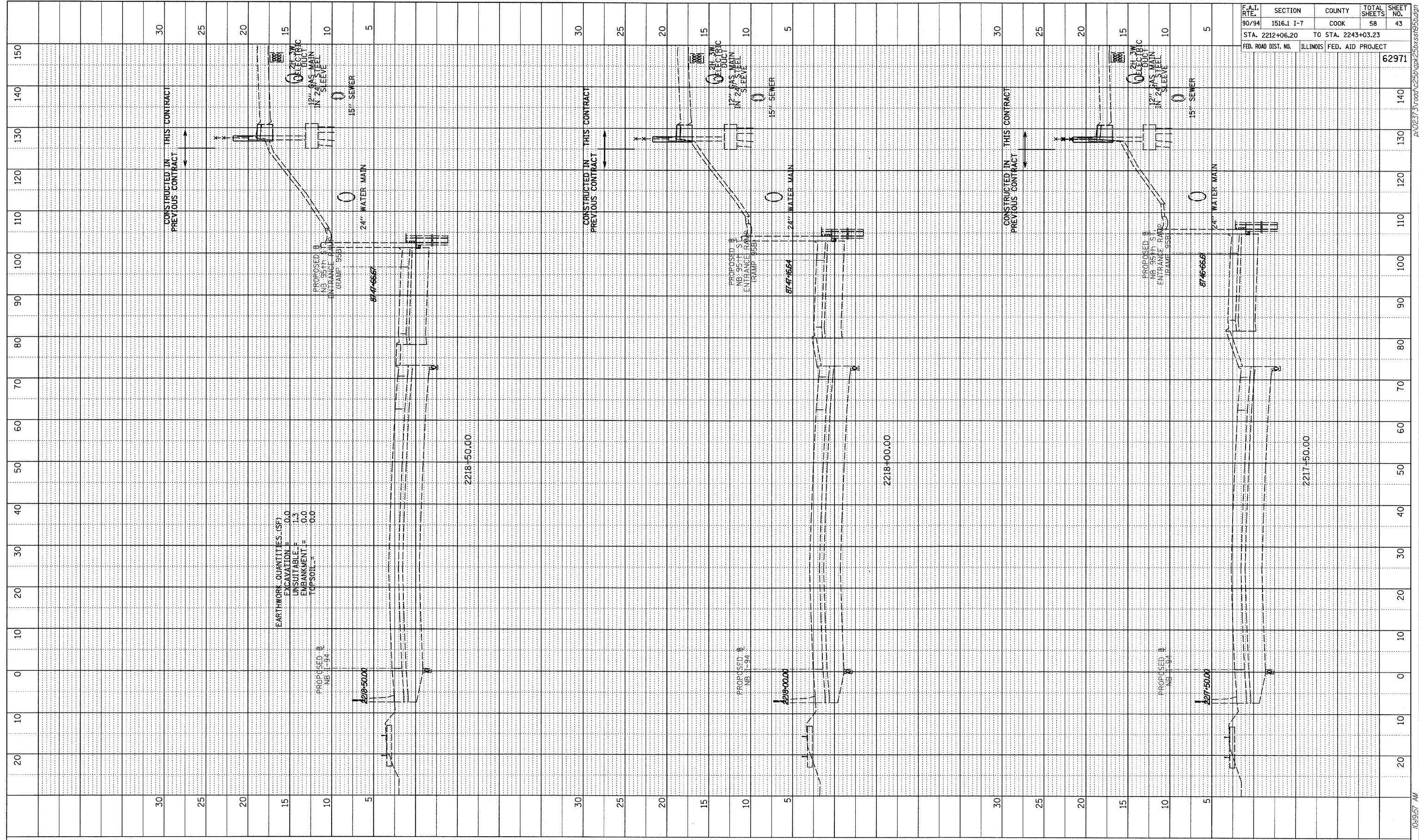
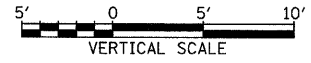


PROFILE	SURVEYED	BY	DATE
NOTE BOOK	GRADES CHECKED		
NO.	PLANS NOTED		
	DISCREPANCY NOTED		



EARTHWORK QUANTITIES (SF)
 EXCAVATION = 0.0
 UNSUITABLE = 1.3
 EMBANKMENT = 0.0
 TOPSOIL = 0.0

TYLIN INTERNATIONAL



NB I-94 (DAN RYAN EXPRESSWAY)
 STA. 2217+50 TO STA. 2218+50

F.A.I. RTE.	SECTION	COUNTY	TOTAL SHEETS	SHEET NO.
90/94	1516.1 I-7	COOK	58	43
STA. 2212+06.20	TO STA. 2243+03.23			
FED. ROAD DIST. NO.	ILLINOIS	FED. AID PROJECT	62971	

10/17/2008 10:57 AM P:\02373\road\225b\pk25\ss\95b.dgn