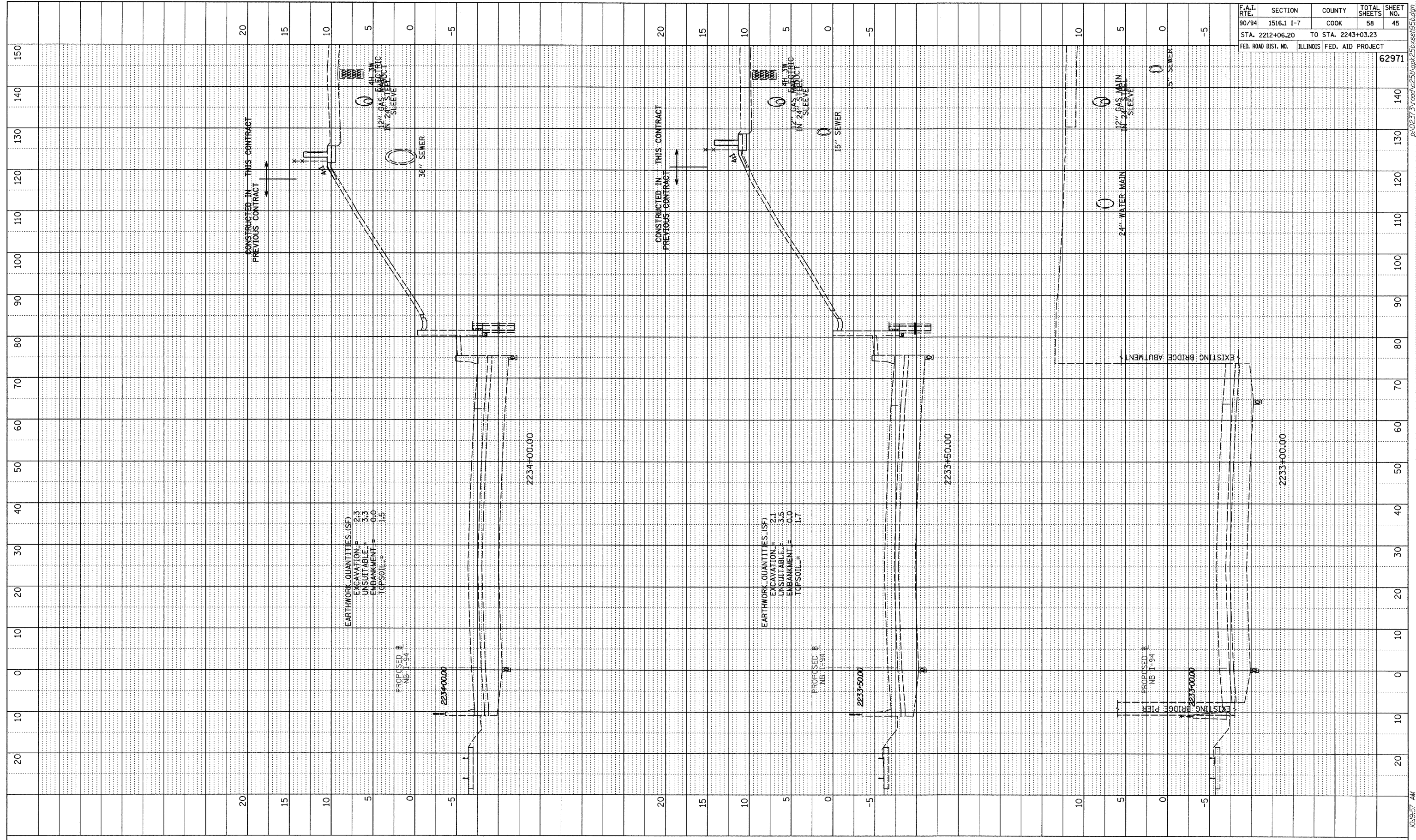


PROFILE	SURVEYED	BY	DATE
NOTE BOOK	GRADES CHECKED		
NO.	BLK. NOTED		
	STRUCTURE NOTATION CHGD		

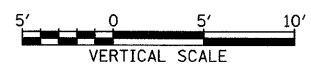
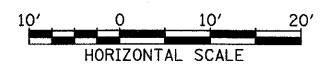


F.A.I. RTE.	SECTION	COUNTY	TOTAL SHEETS	SHEET NO.
90/94	1516.1 I-7	COOK	58	45
STA. 2212+06.20		TO STA. 2243+03.23		
FED. ROAD DIST. NO.	ILLINOIS	FED. AID PROJECT		
				62971

EARTHWORK QUANTITIES (SF)  
 EXCAVATION = 2.3  
 UNSUITABLE = 3.3  
 EMBANKMENT = 0.0  
 TOPSOIL = 1.5

EARTHWORK QUANTITIES (SF)  
 EXCAVATION = 2.1  
 UNSUITABLE = 3.5  
 EMBANKMENT = 0.0  
 TOPSOIL = 1.7

TYLIN INTERNATIONAL



NB I-94 (DAN RYAN EXPRESSWAY)  
 STA. 2233+00 TO STA. 2234+00

10/17/2008 10:49:57 AM