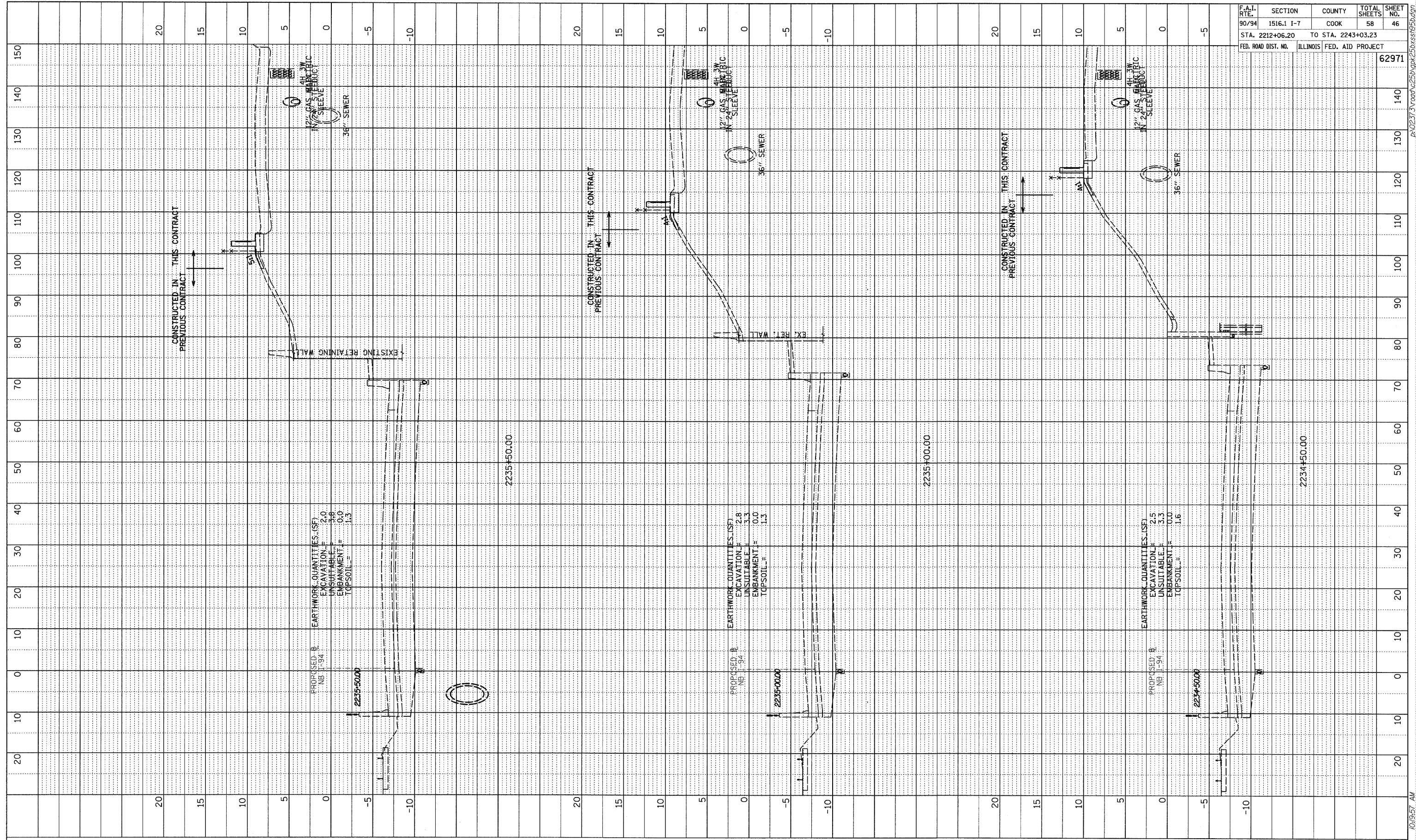
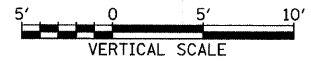
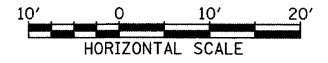


PROFILE SURVEYED BY DATE
 NOTE BOOK GRADES CHECKED
 NO. SIGNATURE NOTATION EPHD



F.A.I. RTE.	SECTION	COUNTY	TOTAL SHEETS	SHEET NO.
90/94	1516.1 I-7	COOK	58	46
STA. 2212+06.20		TO STA. 2243+03.23		
FED. ROAD DIST. NO.	ILLINOIS FED. AID PROJECT		62971	

TYLIN INTERNATIONAL



NB I-94 (DAN RYAN EXPRESSWAY)
 STA. 2234+50 TO STA. 2235+50

10/19/08 10:19:57 AM P:\0237\3\road\2250\pk25\bxss195.dwg