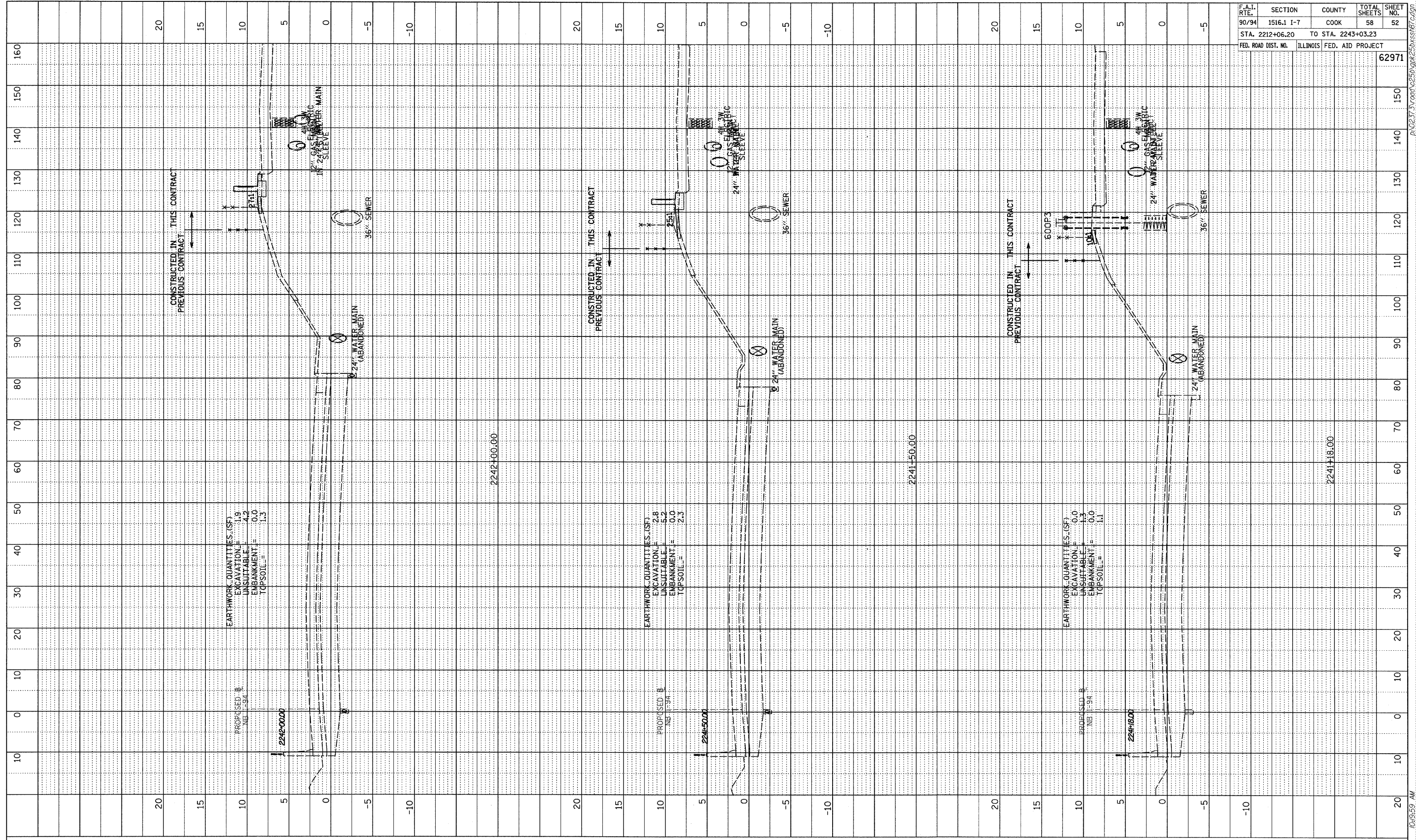
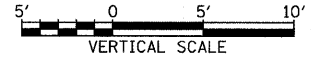
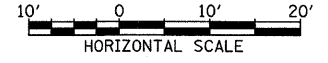


DATE	BY
PROFILE SURVEYED NOTE BOOK GRADES CHECKED NO. _____ DRAWING NOTATION CHNG	



F.A.I. RTE.	SECTION	COUNTY	TOTAL SHEETS	SHEET NO.
90/94	1516.1 I-7	COOK	58	52
STA. 2212+06.20		TO STA. 2243+03.23		
FED. ROAD DIST. NO.	ILLINOIS	FED. AID PROJECT		62971

TYLIN INTERNATIONAL



NB I-94 (DAN RYAN EXPRESSWAY)
 STA. 2241+18 TO STA. 2242+00

10/17/2008 10:59:59 AM