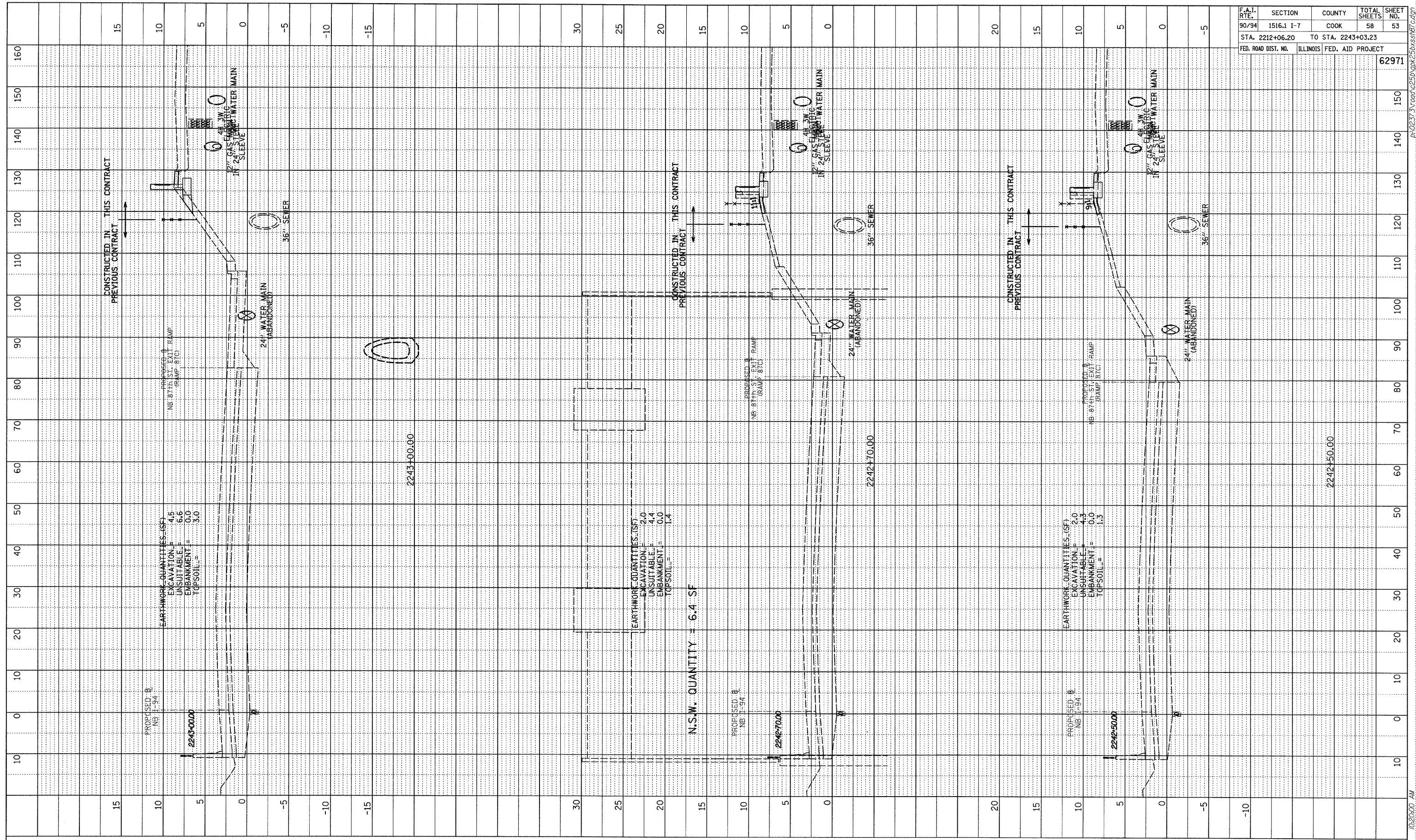
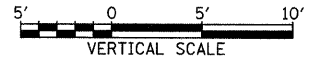
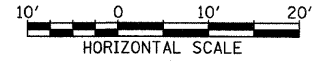


PROFILE	STARTED	DATE
NOTE BOOK	GRADES CHECKED	
NO.	BY	
	NO.	
	NO.	



F.A.I. RTE.	SECTION	COUNTY	TOTAL SHEETS	SHEET NO.
90/94	1516.1 I-7	COOK	58	53
STA. 2212+06.20		TO STA. 2243+03.23		
FED. ROAD DIST. NO.	ILLINOIS	FED. AID PROJECT		62971

TYLIN INTERNATIONAL



NB I-94 (DAN RYAN EXPRESSWAY)  
 STA. 2242+50 TO STA. 2243+00

10/17/2008 10:20:00 AM P:\0237\3\road\c255p\pk55xss187.c.dgn