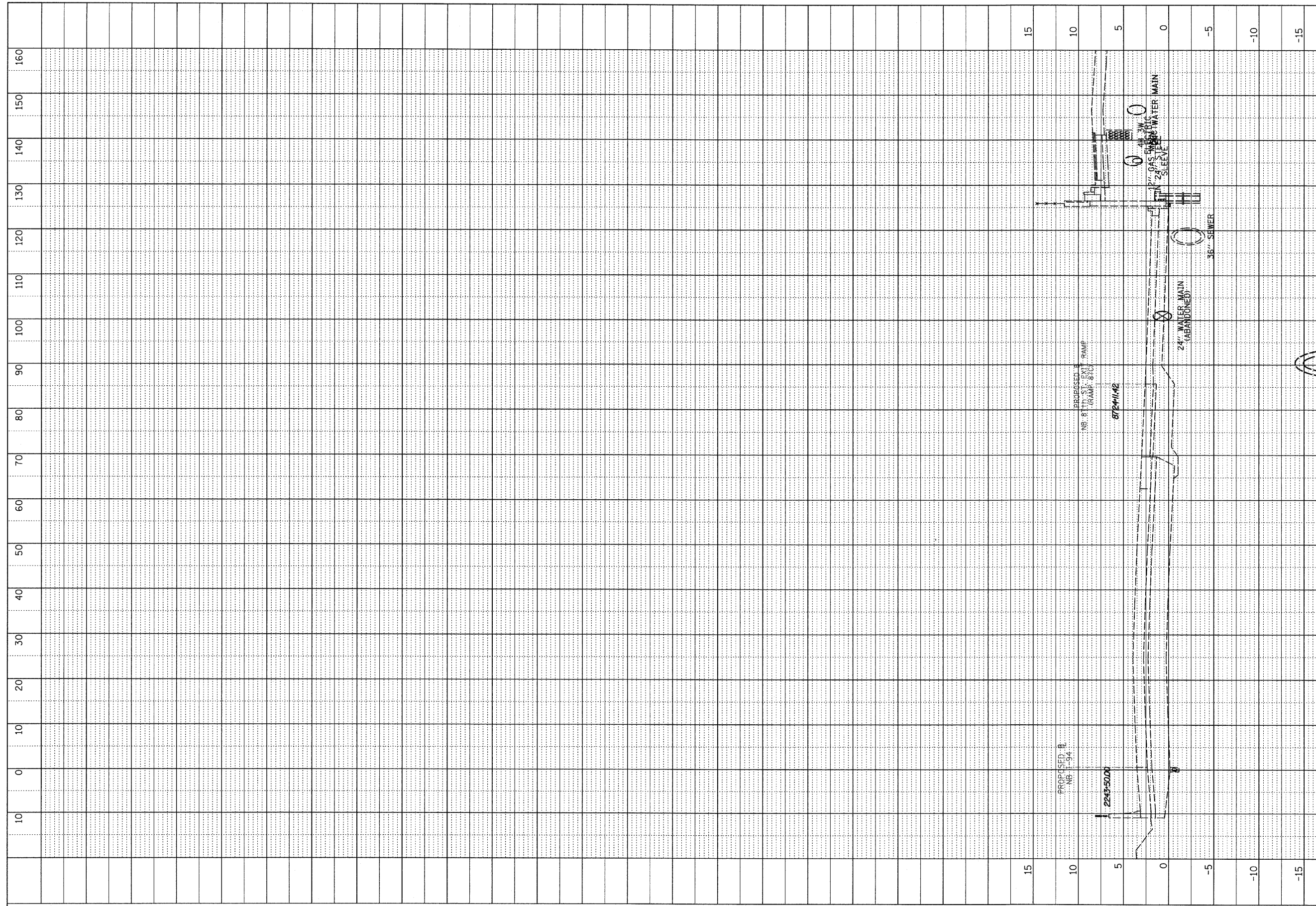
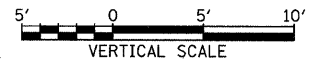
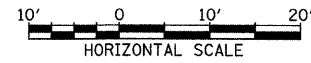


PROFILE	SURVEYED	BY	DATE
NOTE BOOK	GRADES CHECKED		
	E.M. NOTED		
	NO. OF		
	STAKE		
	NOTATIONS		



F.A.I. RTE.	SECTION	COUNTY	TOTAL SHEETS	SHEET NO.
90/94	1516.1 I-7	COOK	58	54
STA. 2212+06.20		TO STA. 2243+03.23		
FED. ROAD DIST. NO.	ILLINOIS	FED. AID PROJECT		
		62971		

TYLIN INTERNATIONAL



NB I-94 (DAN RYAN EXPRESSWAY)
STA. 2243+50

10/17/2008 10:20:00 AM P:\02373\road\2556\gk\2556xss187.cad