

INDEX OF SHEETS

FOR INDEX OF SHEETS, SEE SHEET NO. 2

DAN RYAN EXPRESSWAY:	ADT (2010)	DESIGN SPEED	POSTED SPEED
NB I-94 (DAN RYAN)	151,866	60 MPH	55 MPH
NB 75TH STREET C-D ENTRANCE RAMP	11,300	45 MPH	40 MPH
NB 71ST STREET C-D EXIT RAMP	6,600	45 MPH	40 MPH

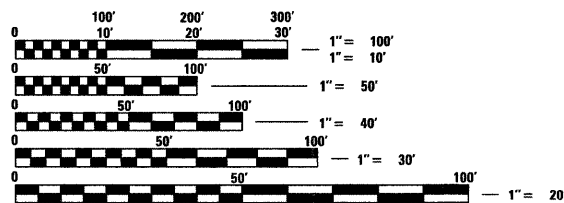
MAJOR CROSS STREETS AND FRONTAGE ROADS:

	ADT	POSTED SPEED
75TH STREET	17,700	30 MPH
71ST STREET	10,500	30 MPH
S. STATE STREET	15,100	30 MPH

DESCRIPTION OF PROJECT

CONSTRUCTION OF FLUTED KNEE WALLS LOCATED WITHIN THE PROJECT LIMITS.

PROJECT LOCATED IN THE CITY OF CHICAGO



FULL SIZE PLANS HAVE BEEN PREPARED USING STANDARD ENGINEERING SCALES; REDUCED SIZED PLANS WILL NOT CONFORM TO STANDARD SCALES. IN MAKING MEASUREMENTS ON REDUCED PLANS, THE ABOVE SCALES MAY BE USED

DIGGER:
CHICAGO UTILITY ALERT NETWORK
(312) 744-7000

CTA CONTACT:
DAVID HEARD,
MANAGER, CONSTRUCTION
MANAGEMENT OVERSIGHT
(312) 681-3862

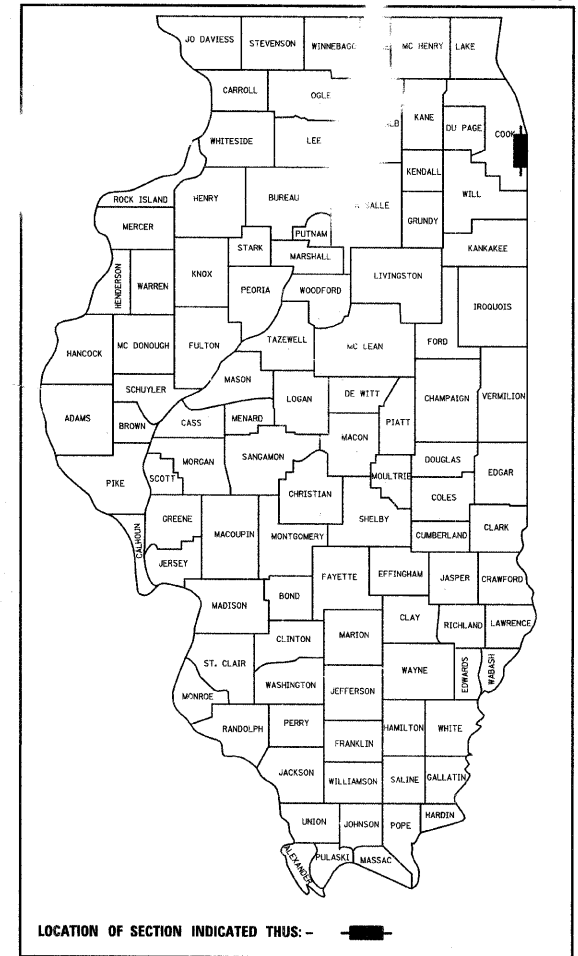
CONTRACT NO. 62975

STATE OF ILLINOIS
DEPARTMENT OF TRANSPORTATION
DIVISION OF HIGHWAYS

PROPOSED HIGHWAY PLANS

F.A.I. ROUTE 94 (DAN RYAN EXPRESSWAY)
SECTION 1818 I-7
FLUTED KNEE WALL CONSTRUCTION
ALONG STATE STREET FROM 75TH STREET TO 71ST STREET
COOK COUNTY
C-91-233-05

F.A.I. RTE.	SECTION	COUNTY	TOTAL SHEETS	SHEET NO.
94	1818 I-7	COOK	58	1
FED. ROAD DIST. NO.			ILLINOIS FED. AID PROJECT	
D-91-233-05			62975	



STATE OF ILLINOIS
DEPARTMENT OF TRANSPORTATION
DIVISION OF HIGHWAYS

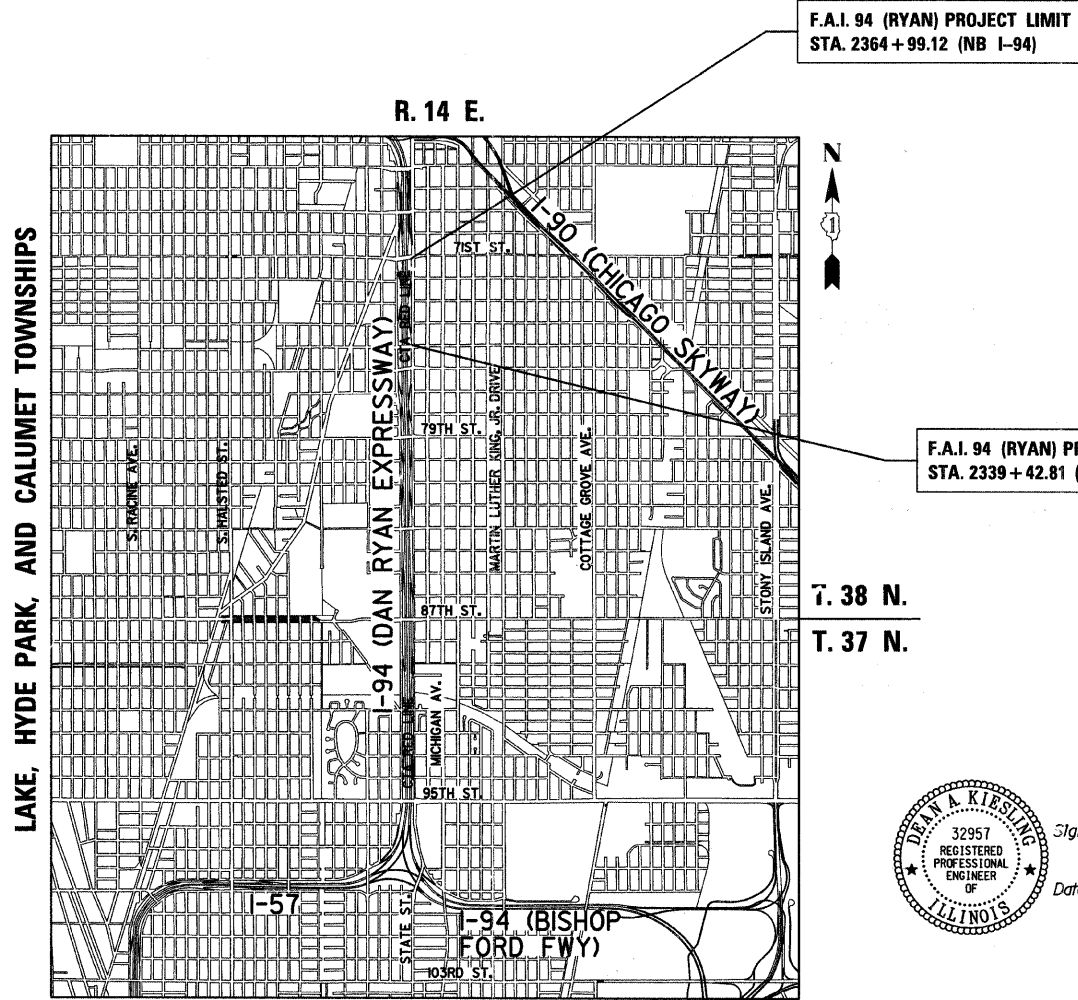
SUBMITTED FEBRUARY 11, 2009

Diane M. O'Keefe
DEPUTY DIRECTOR OF HIGHWAYS, REGION ENGINEER

June 26, 2009
Charles J. Ingersoll
ENGINEER OF DESIGN AND ENVIRONMENT

June 26, 2009
Christine M. Reed
DIRECTOR OF HIGHWAYS, CHIEF ENGINEER

CONTRACT 25F



LOCATION MAP

GROSS LENGTH OF PROJECT = 2556.31 FT. = 0.48 MI.
NET LENGTH OF PROJECT = 2556.31 FT. = 0.48 MI.
MAP SCALE: 1" = 1/2 MILE

32957
REGISTERED PROFESSIONAL ENGINEER OF ILLINOIS

Signed Dean A. Klesling
Dean A. Klesling, P.E., Ill. Lic. No. 32957
Expires 11-30-2009
Date FEBRUARY 10, 2009

DISTRICT ONE DESIGN / PROJECT MANAGER:
BRIAN KUTTAB (847) 705 - 4431