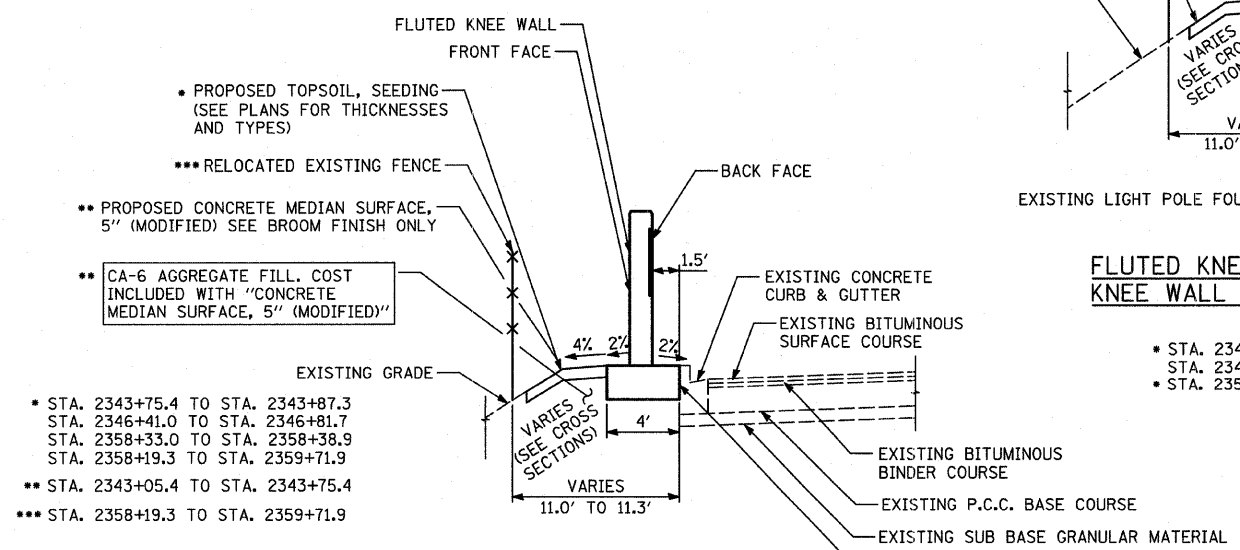
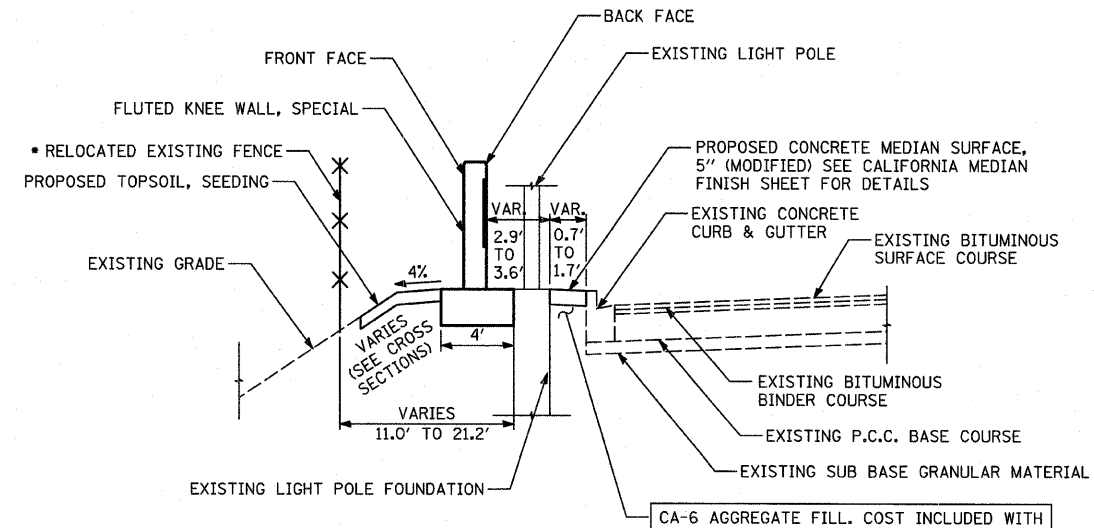
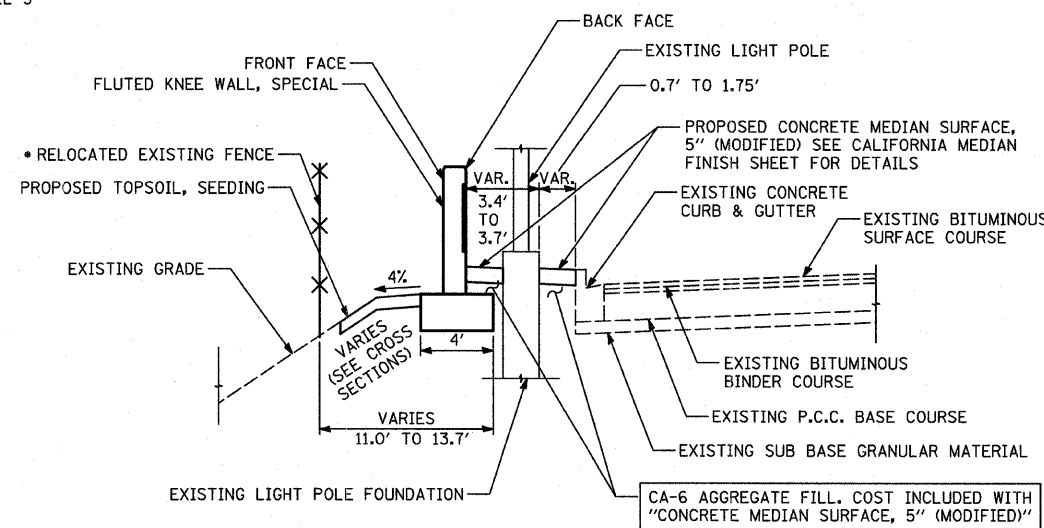


**PROPOSED NB STATE ST.**  
 STA. 2342+98.2 TO STA. 2343+87.3  
 STA. 2346+41.0 TO STA. 2346+81.7  
 STA. 2358+33.0 TO STA. 2358+38.9  
 STA. 2358+19.3 TO STA. 2359+71.9



1/2" PERFORMED JOINT FILLER (INCLUDED IN THE COST OF FLUTED KNEE WALL)

REVISIONS	
NAME	DATE

ILLINOIS DEPARTMENT OF TRANSPORTATION  
 F.A.I. 94 (DAN RYAN EXPRESSWAY)

**EXISTING AND PROPOSED TYPICAL SECTIONS**  
 NB STATE ST.  
 SHEET 2 OF 2

SCALE: NONE  
 DATE: FEBRUARY 13, 2009

DRAWN BY: TB  
 CHECKED BY: TGB, MI