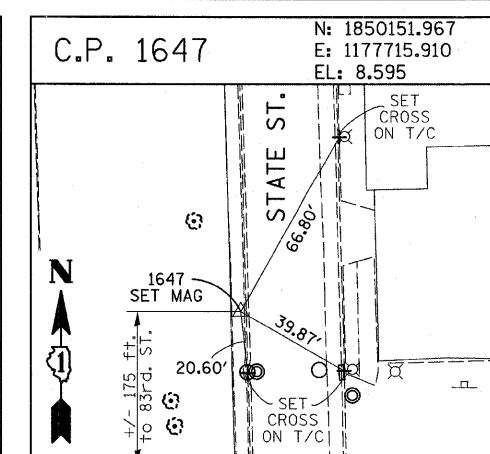
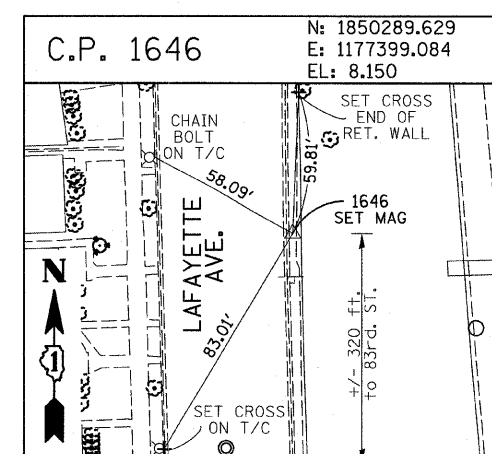
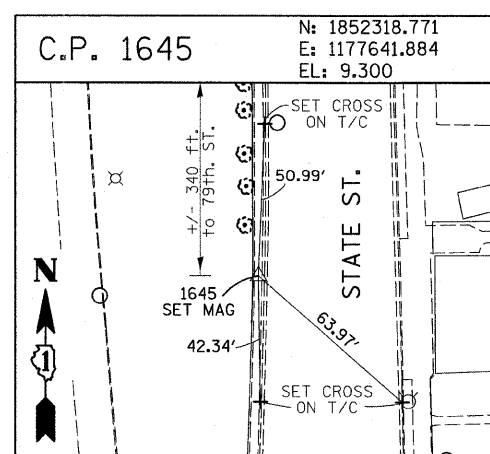
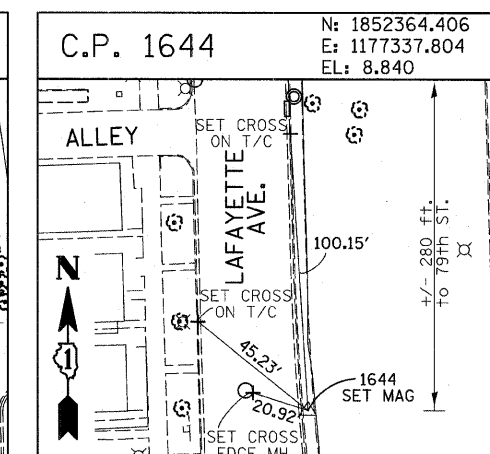
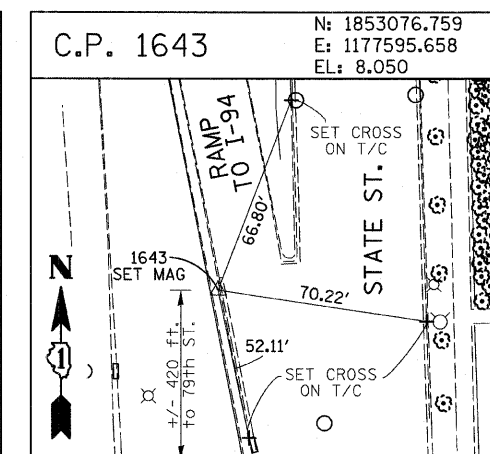
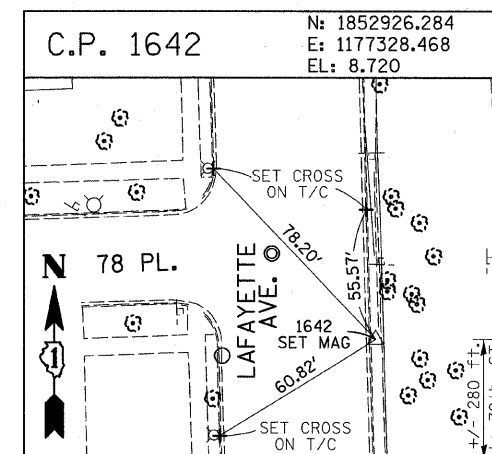
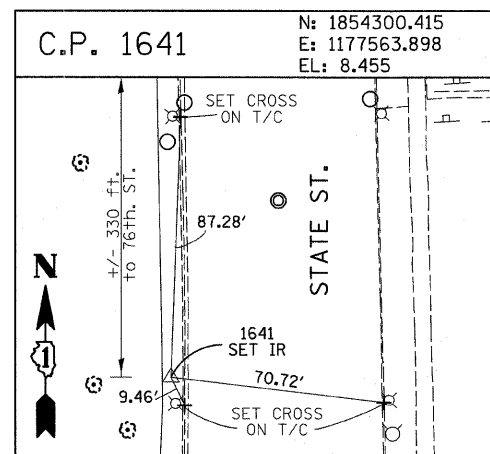
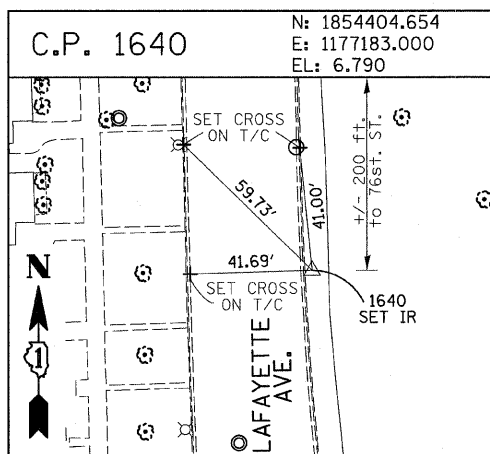
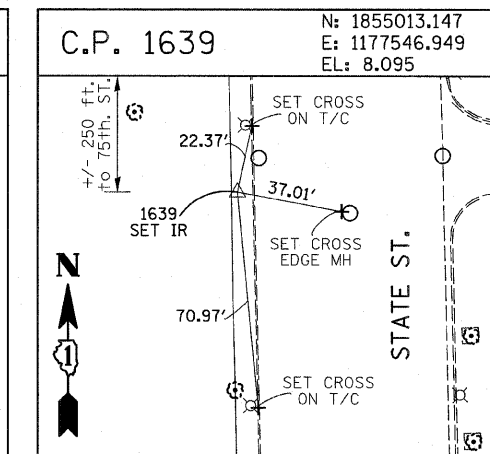
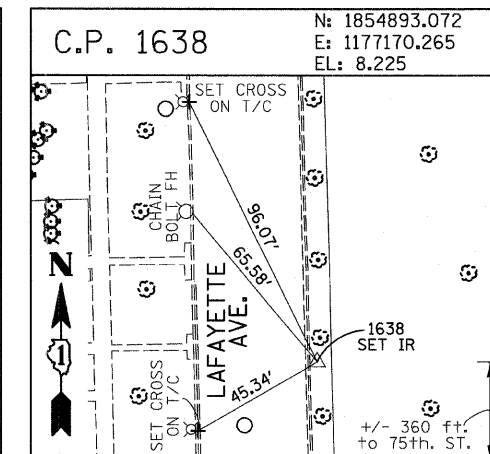
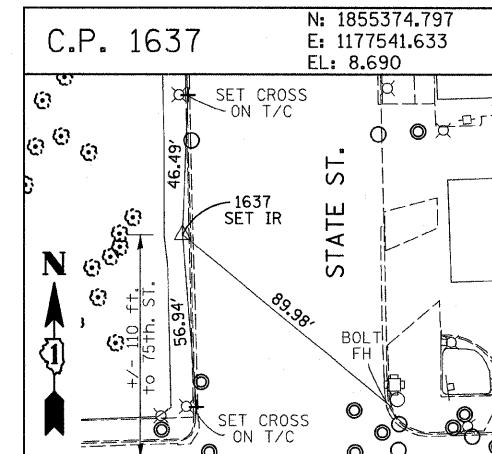
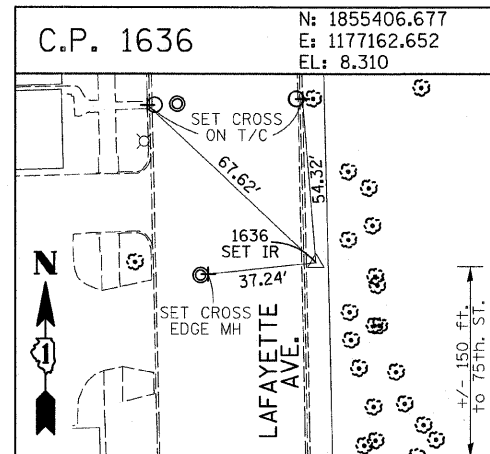
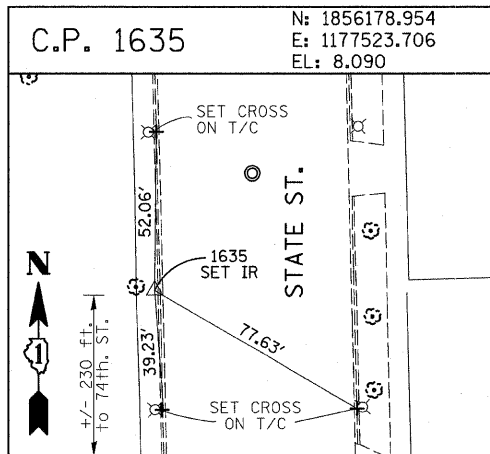
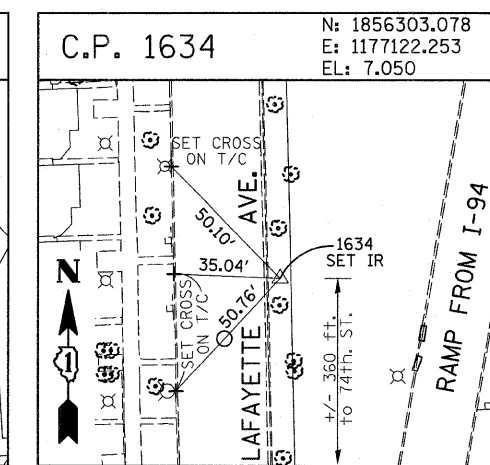
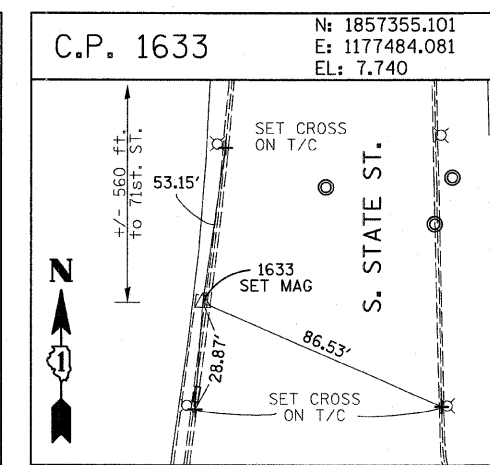
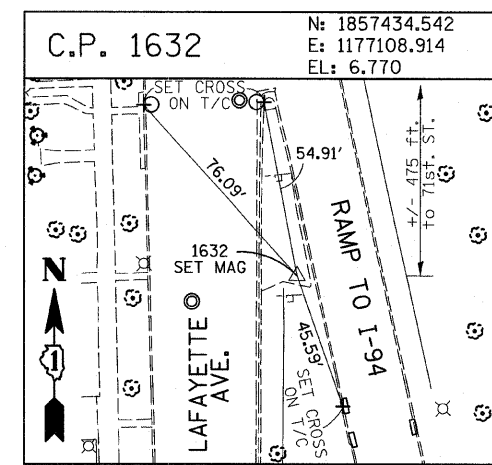
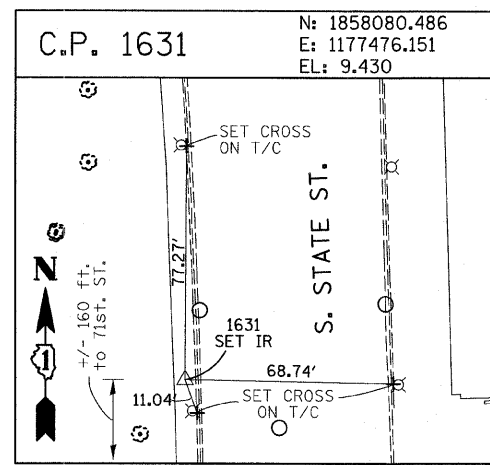
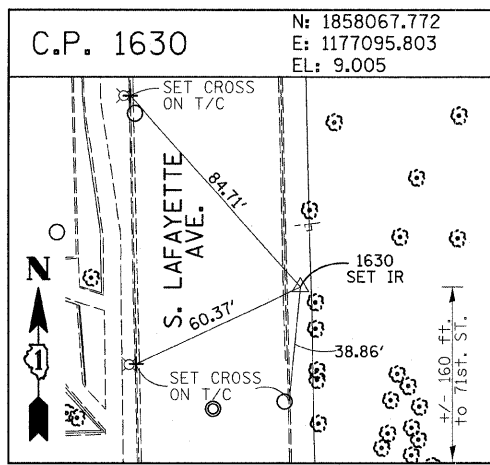


F.A.I. RTE.	SECTION	COUNTY	TOTAL SHEETS	SHEET NO.
94	1818 I-7	COOK	58	12
STA. 2339+42.81		TO STA. 2364+99.12		
FED. ROAD DIST. NO.		ILLINOIS FED. AID PROJECT		
		62975		



American Surveying Consultants, P.C.
 SURVEYORS-ENGINEERS-ROCKETS-SCIENTISTS
 1927 Plum St., Chicago, IL 60611 606 N. Northbrook Rd., Northbrook, IL 60062

REVISIONS	
NAME	DATE

ILLINOIS DEPARTMENT OF TRANSPORTATION
 F.A.I. 94 (DAN RYAN EXPRESSWAY)
 SURVEY TIES FOR CONTROL POINTS
 SHEET 3 OF 7

SCALE: 1"=30'
 DATE: FEBRUARY 13, 2009
 DRAWN BY: GSP
 CHECKED BY: MMW

3/19/2009 2:43:32 PM