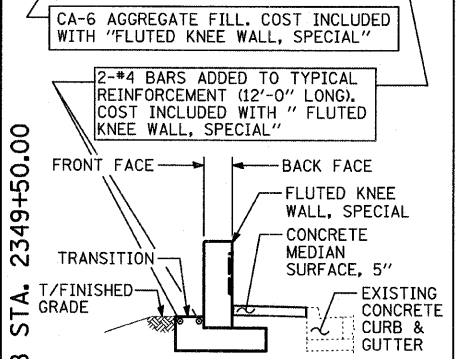
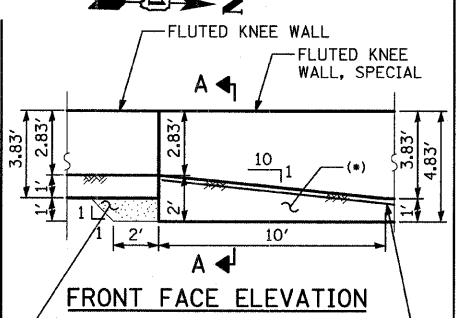
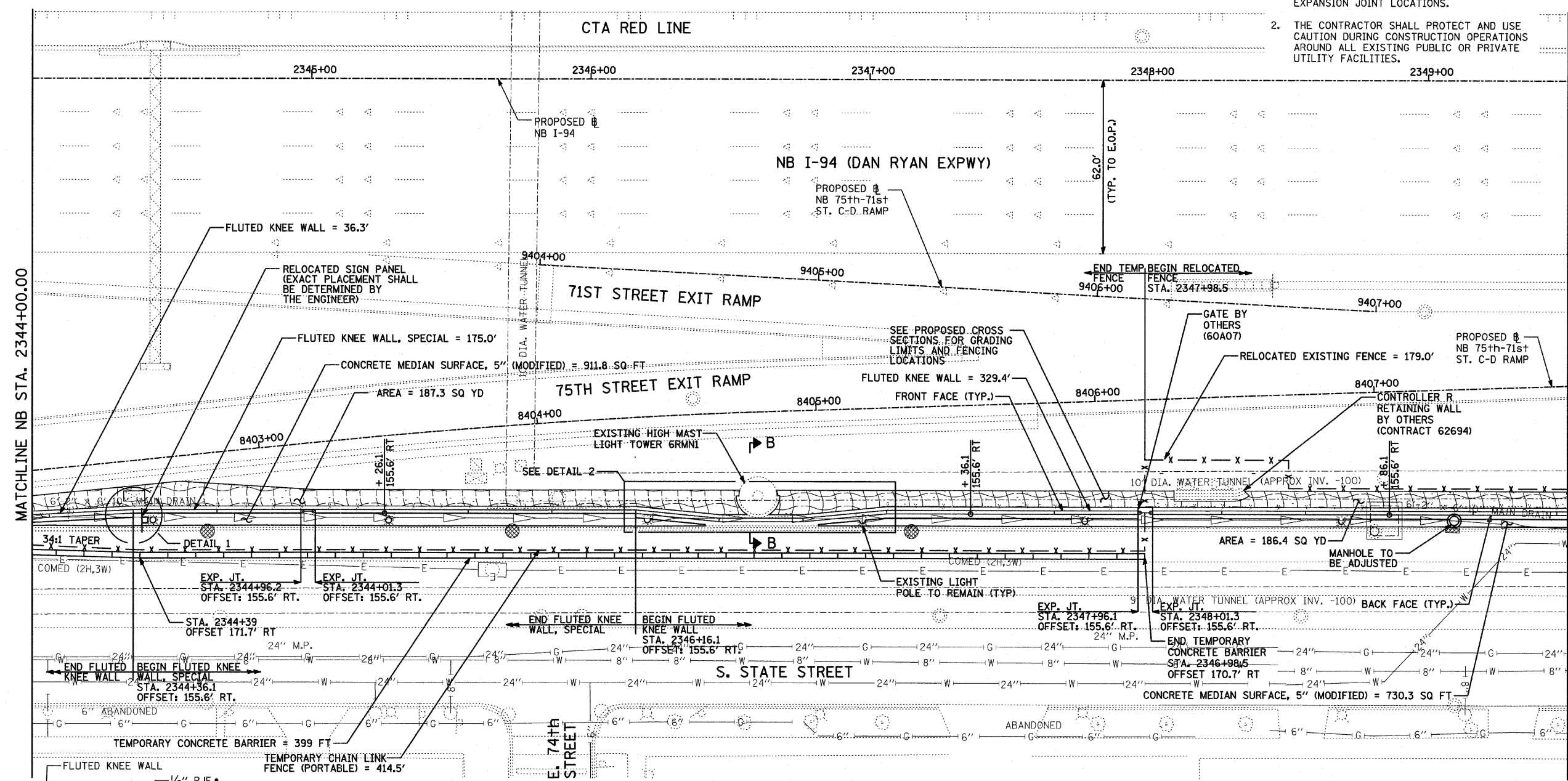


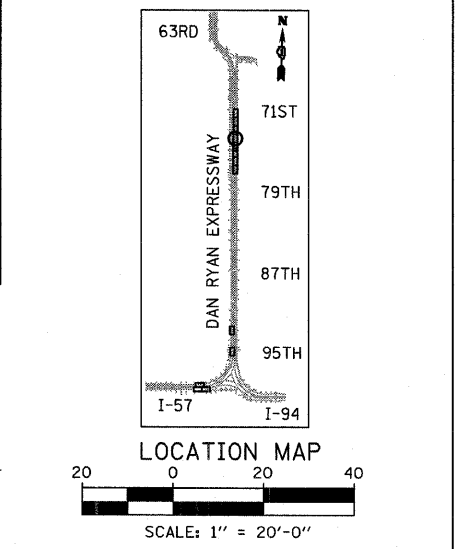
F.A.I. RTE.	SECTION	COUNTY	TOTAL SHEETS	SHEET NO.
94	1818 I-7	COOK	58	20
STA. 2339+42.81		TO STA. 2364+99.12		
FED. ROAD DIST. NO.		ILLINOIS FED. AID PROJECT		62975

NOTES:

- STATION AND OFFSET CALLOUTS ALONG THE LENGTH OF EITHER FLUTED KNEE WALL OR FLUTED KNEE WALL, SPECIAL ARE TAKEN FROM THE BACK FACE SIDE AT PROPOSED EXPANSION JOINT LOCATIONS.
- THE CONTRACTOR SHALL PROTECT AND USE CAUTION DURING CONSTRUCTION OPERATIONS AROUND ALL EXISTING PUBLIC OR PRIVATE UTILITY FACILITIES.



SECTION A-A
FOOTING TRANSITION
 (FROM FLUTED KNEE WALL, SPECIAL TO FLUTED KNEE WALL)
DETAIL - 3



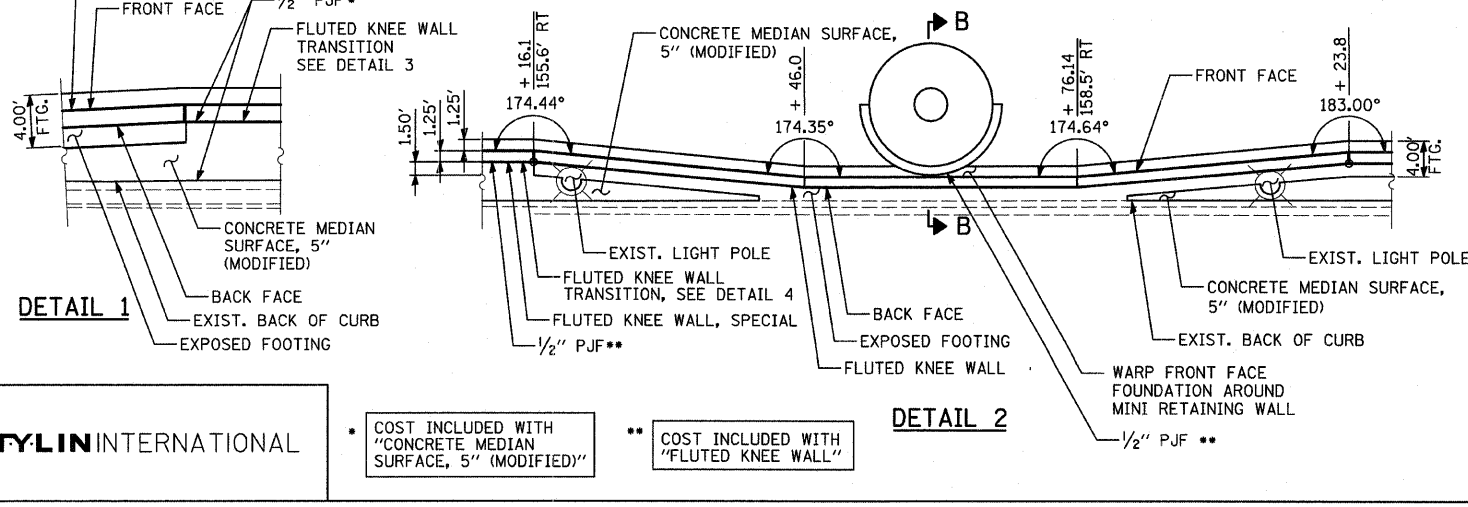
REVISIONS	
NAME	DATE

ILLINOIS DEPARTMENT OF TRANSPORTATION
 F.A.I. 94 (DAN RYAN EXPRESSWAY)

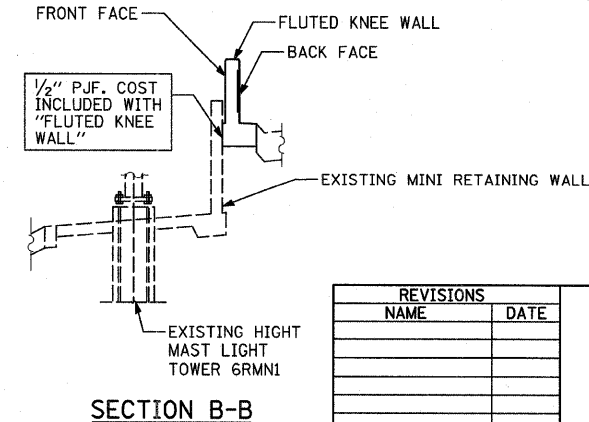
PROPOSED PLAN
 NB I-94 (DAN RYAN EXPRESSWAY)
 STA. 2344+00.00 TO 2349+50.00

SCALE: 1"=20'
 DATE: FEBRUARY 13, 2009

DRAWN BY: AMB, MAF, TB
 CHECKED BY: TGB, MI



- LEGEND:**
- EROSION CONTROL BLANKET, SEEDING, CLASS 2A, NITROGEN, PHOSPHORUS, AND POTASSIUM FERTILIZER NUTRIENTS, TOPSOIL FURNISH AND PLACE, 4"
 - EROSION CONTROL BLANKET, SEEDING, CLASS 2A, NITROGEN, PHOSPHORUS, AND POTASSIUM FERTILIZER NUTRIENTS, TOPSOIL FURNISH AND PLACE, 12"
 - EROSION CONTROL BLANKET, SEEDING, CLASS 4 (MODIFIED), SEEDING, CLASS 5A (MODIFIED), TOPSOIL FURNISH AND PLACE, 12"
 - EROSION CONTROL BLANKET, SEEDING, CLASS 5A (MODIFIED), TOPSOIL FURNISH AND PLACE, 6"
 - INLET FILTER



SECTION B-B

TYLIN INTERNATIONAL

• COST INCLUDED WITH "CONCRETE MEDIAN SURFACE, 5" (MODIFIED)"

** COST INCLUDED WITH "FLUTED KNEE WALL"