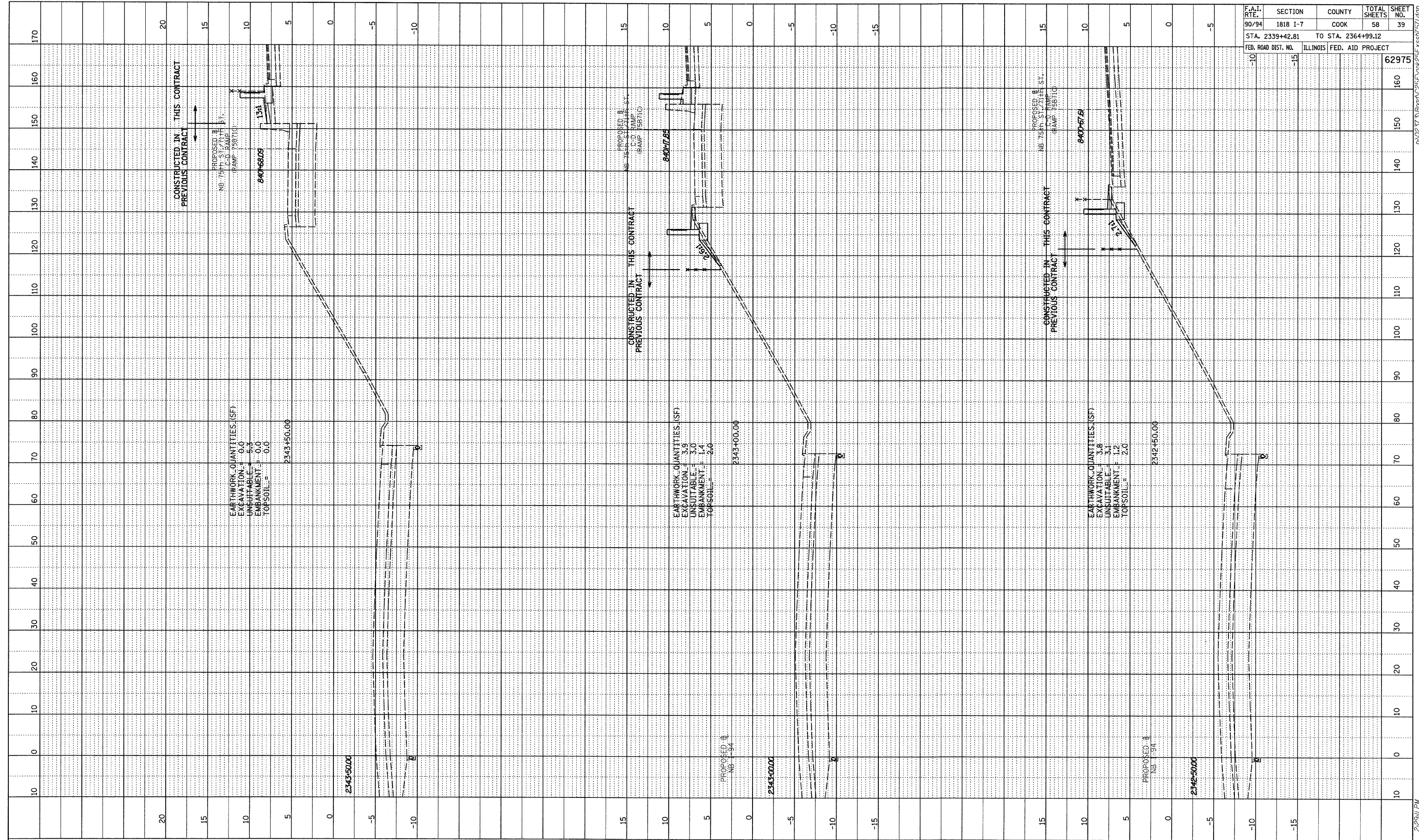
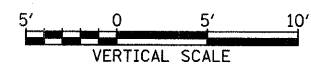
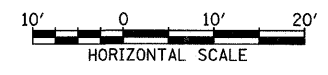


PROFILE	SURVEYED	BY	DATE
NOTE BOOK	DESIGNED		
NO.	BY		
	STRUCTURE		
	NOTATIONS		
	CHKD		



F.A.I. RTE.	SECTION	COUNTY	TOTAL SHEETS	SHEET NO.
90/94	1818 I-7	COOK	58	39
STA. 2339+42.81		TO STA. 2364+99.12		
FED. ROAD DIST. NO.	ILLINOIS FED. AID PROJECT		62975	

TYLIN INTERNATIONAL



NB I-94 (DAN RYAN EXPRESSWAY)  
 STA. 2342+50 TO STA. 2343+50

3/19/2009 2:29:11 PM P:\02373\Road\025\Fig\25Figs\25Figs.dwg