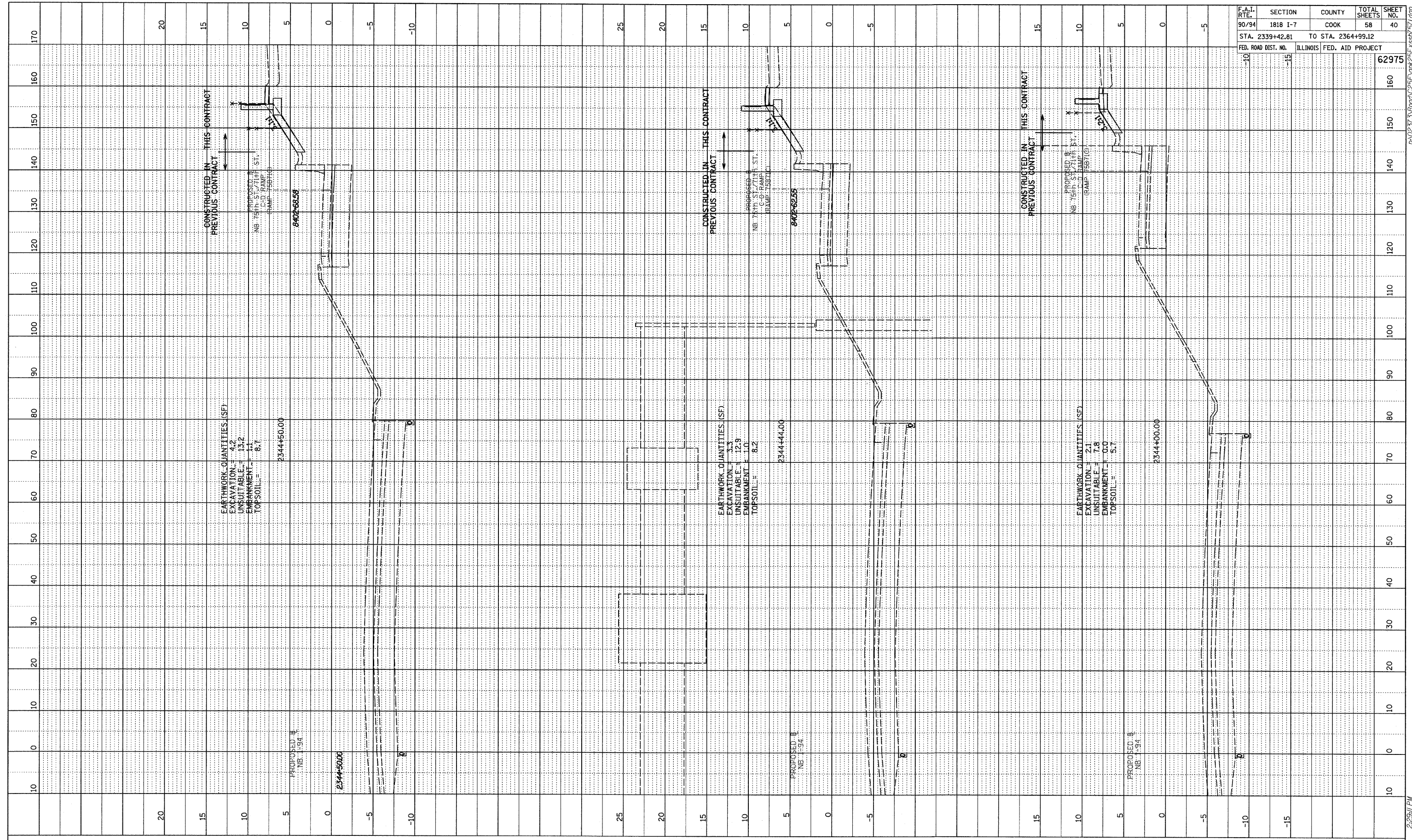
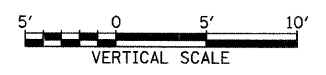
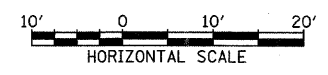


PROFILE SURVEYED BY _____ DATE _____
 GRADES CHECKED BY _____
 NOTE BOOK NO. _____
 STRUCTURE NOTATIONS DFD



F.A.I. RTE.	SECTION	COUNTY	TOTAL SHEETS	SHEET NO.
90/94	1818 I-7	COOK	58	40
STA. 2339+42.81		TO STA. 2364+99.12		
FED. ROAD DIST. NO.		ILLINOIS FED. AID PROJECT		
				62975

TYLIN INTERNATIONAL



NB I-94 (DAN RYAN EXPRESSWAY)
 STA. 2344+00 TO STA. 2344+50

3/19/2009 2:29:11 PM P:\02313\Road\025\Fig\025F ASSY 57.dgn