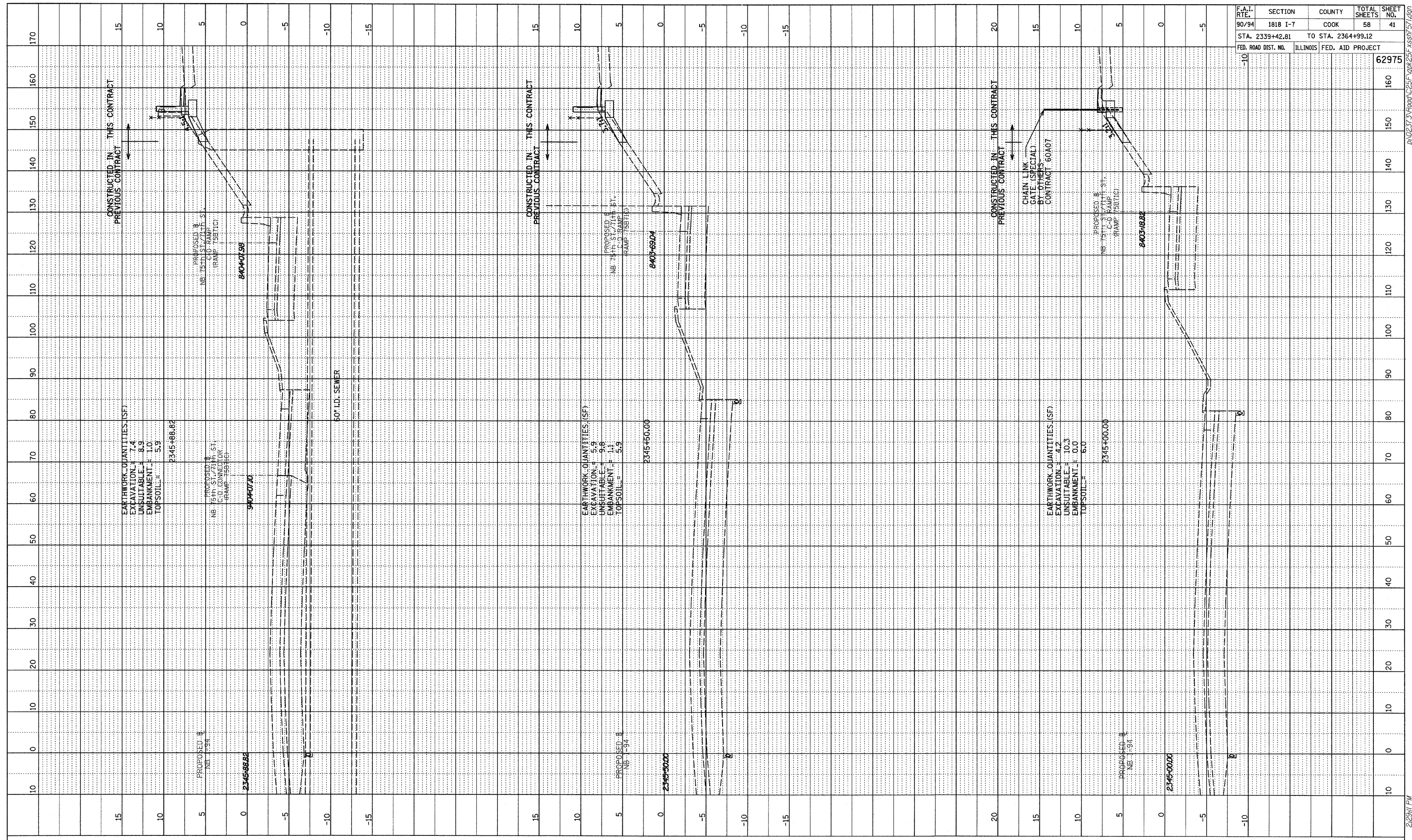
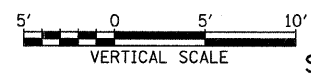
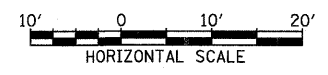


PROFILE	REVIEWED	DATE
NOTE BOOK	GRADES CHECKED	
	BY	
	NO.	
	STRUCTURE	
	NOTATION	
	CHRD	



F.A.I. RTE.	SECTION	COUNTY	TOTAL SHEETS	SHEET NO.
90/94	1818 I-7	COOK	58	41
STA. 2339+42.81		TO STA. 2364+99.12		
FED. ROAD DIST. NO.	ILLINOIS	FED. AID PROJECT		
				62975

TYLIN INTERNATIONAL



NB I-94 (DAN RYAN EXPRESSWAY)
STA. 2345+00 TO STA. 2345+88.82

3/19/2009 2:29:11 PM