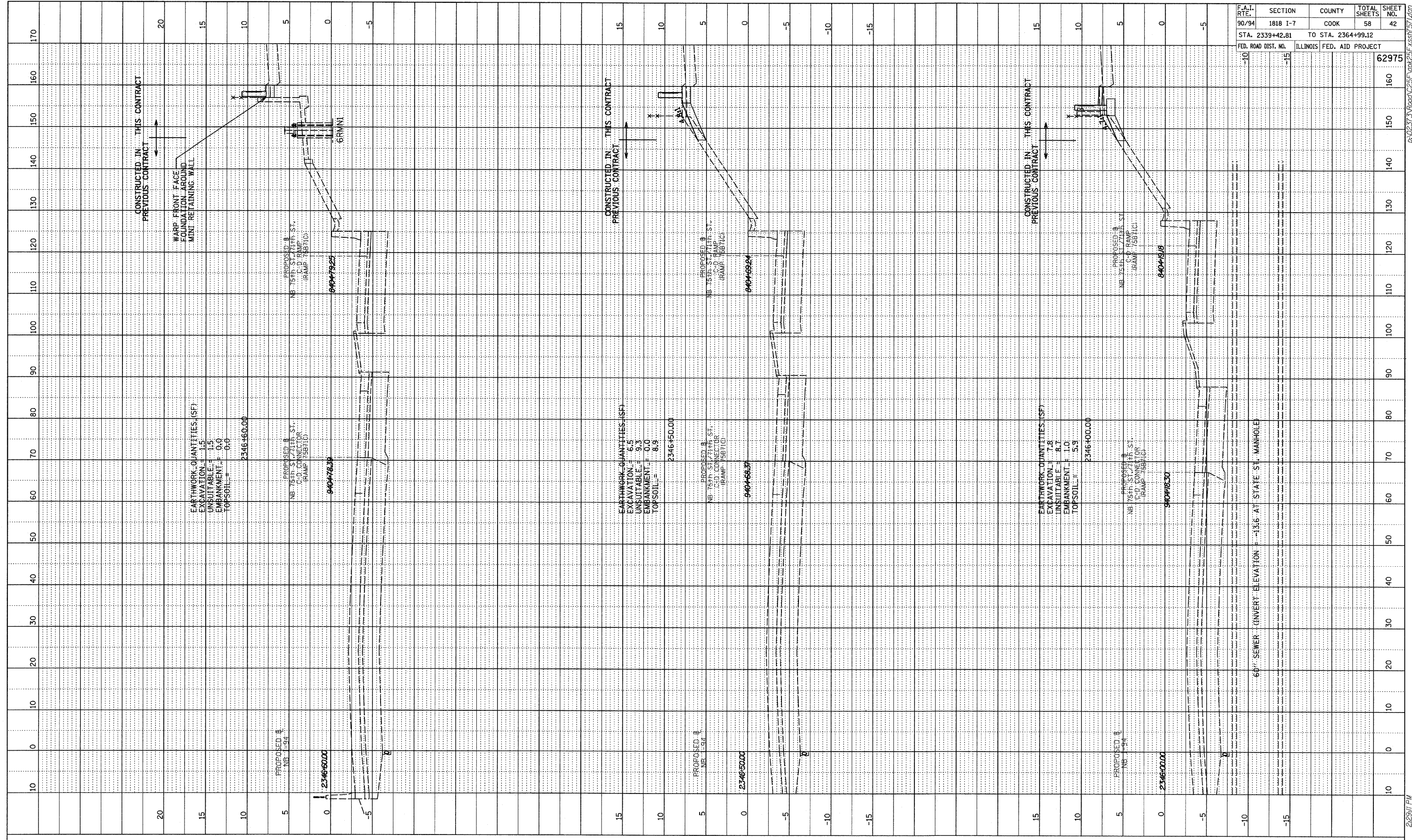
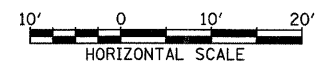


PROFILE SURVEYED BY DATE
 GRADES CHECKED
 E.M. NOTED
 STRUCTURE NOTATIONS CH/CD



TYLIN INTERNATIONAL



NB I-94 (DAN RYAN EXPRESSWAY)
 STA. 2346+00 TO STA. 2346+60

F.A.I. RTE.	SECTION	COUNTY	TOTAL SHEETS	SHEET NO.
90/94	1818 I-7	COOK	58	42
STA. 2339+42.81		TO STA. 2364+99.12		
FED. ROAD DIST. NO.	ILLINOIS FED. AID PROJECT		62975	

3/19/2009 2:29:11 PM P:\02313\Road\2346\2346-60.dwg KSS/ST/AGP