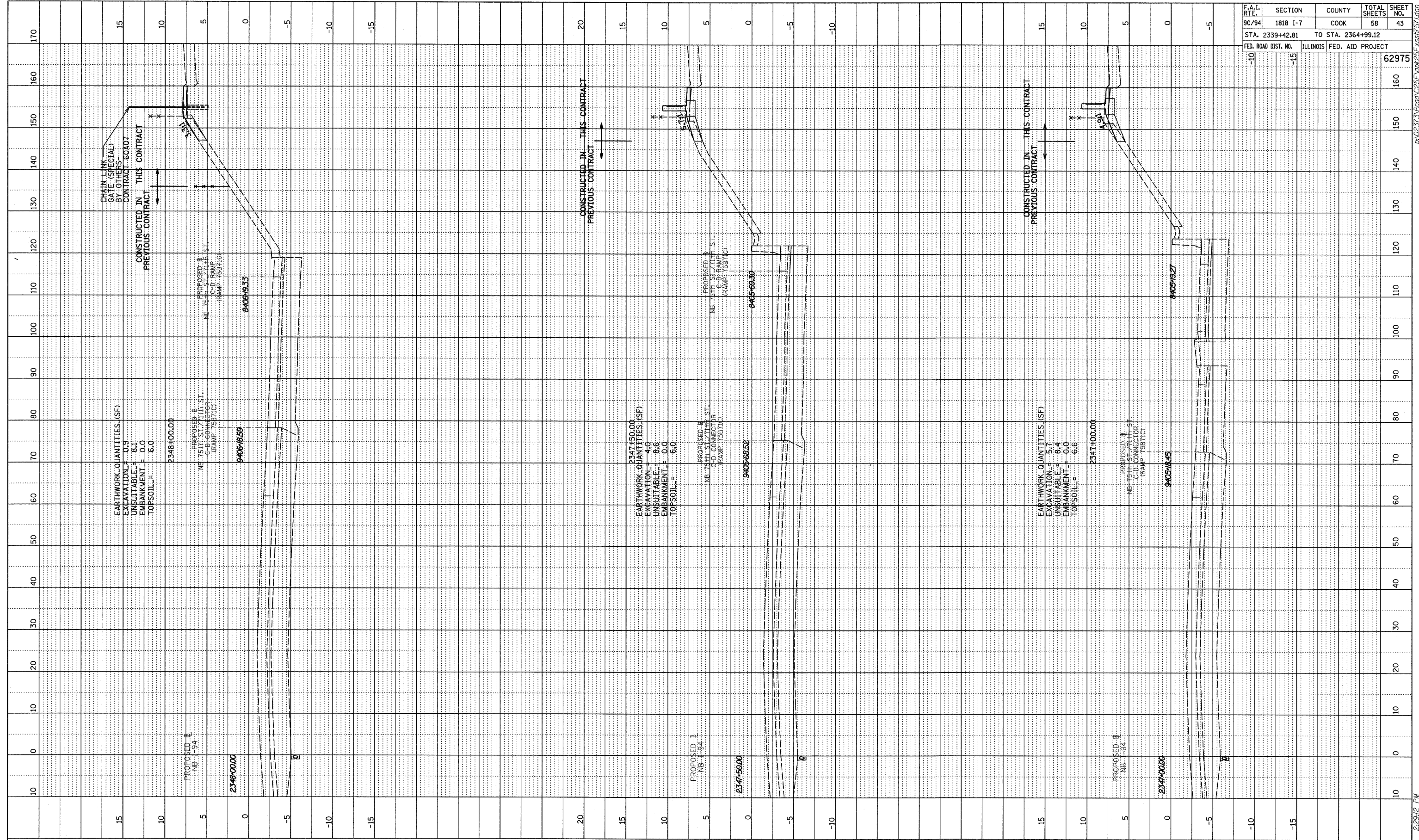
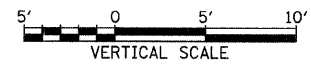


PROFILE SURVEYED BY DATE  
 GRADES CHECKED  
 ELM. NOTED  
 STRUCTURE NOTATIONS C/P/R/D



F.A.I. RTE.	SECTION	COUNTY	TOTAL SHEETS	SHEET NO.
90/94	1818 I-7	COOK	58	43
STA. 2339+42.81		TO STA. 2364+99.12		
FED. ROAD DIST. NO.	ILLINOIS FED. AID PROJECT		62975	

TYLIN INTERNATIONAL



NB I-94 (DAN RYAN EXPRESSWAY)  
 STA. 2347+00 TO STA. 2348+00

3/19/2009 2:29:42 PM P:\02373\Road\251\904251.dwg KSS/ST/1400