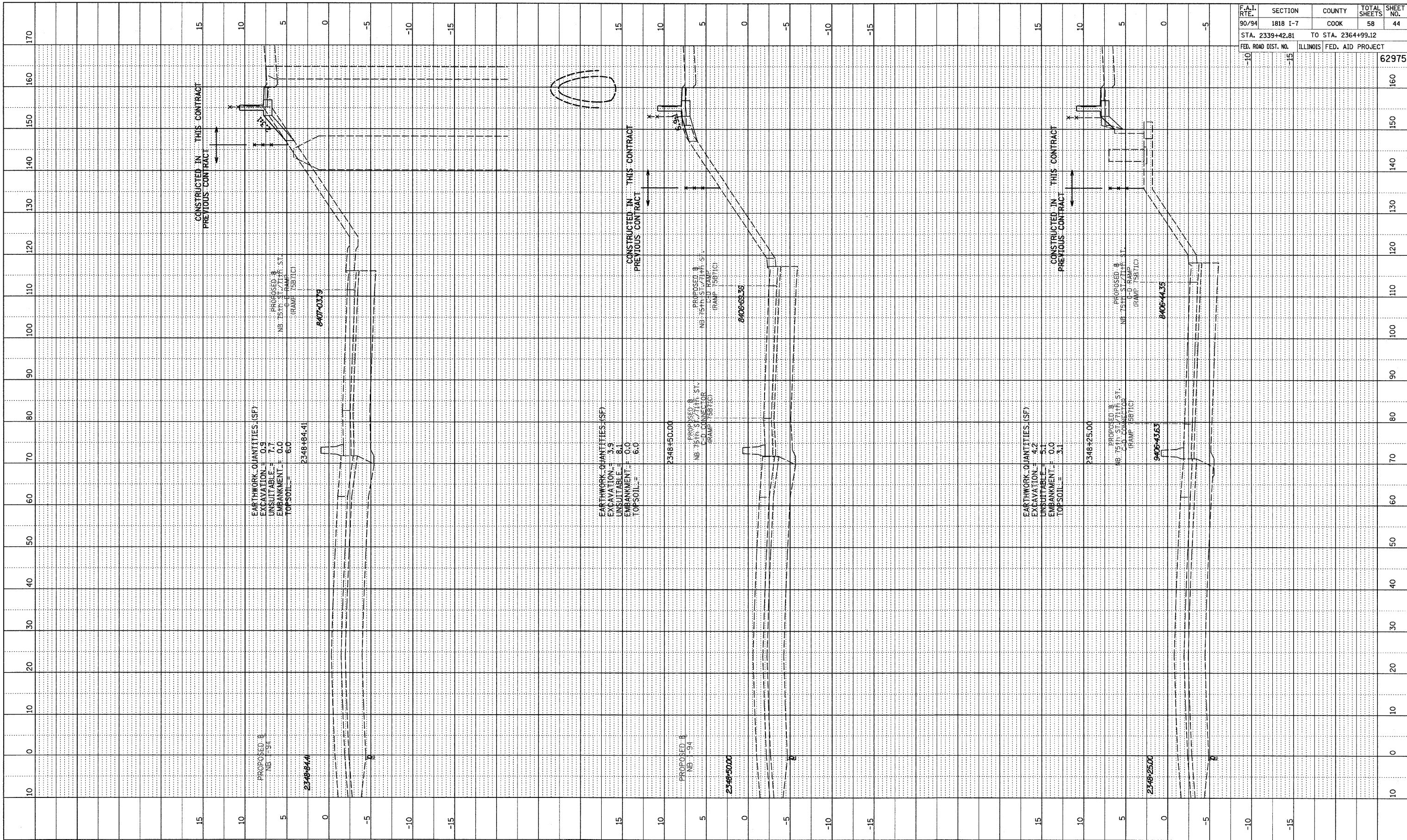
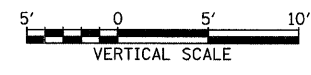
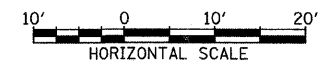


PROFILE SURVEYED BY DATE
 (REVISED) CHECKED
 NOTE BOOK (E.M., NOTED)
 NO. STRUCTURE NOTATIONS (P.R.D.)



F.A.I. RTE.	SECTION	COUNTY	TOTAL SHEETS	SHEET NO.
90/94	1818 I-7	COOK	58	44
STA. 2339+42.81		TO STA. 2364+99.12		
FED. ROAD DIST. NO.		ILLINOIS FED. AID PROJECT		
-10	-15			62975

TYLIN INTERNATIONAL



NB I-94 (DAN RYAN EXPRESSWAY)
 STA. 2348+25 TO STA. 2348+84.41

3/19/2009 2:29:12 PM P:\02373\Road\25F\02425F.dwg 25F.kss/ST/1407