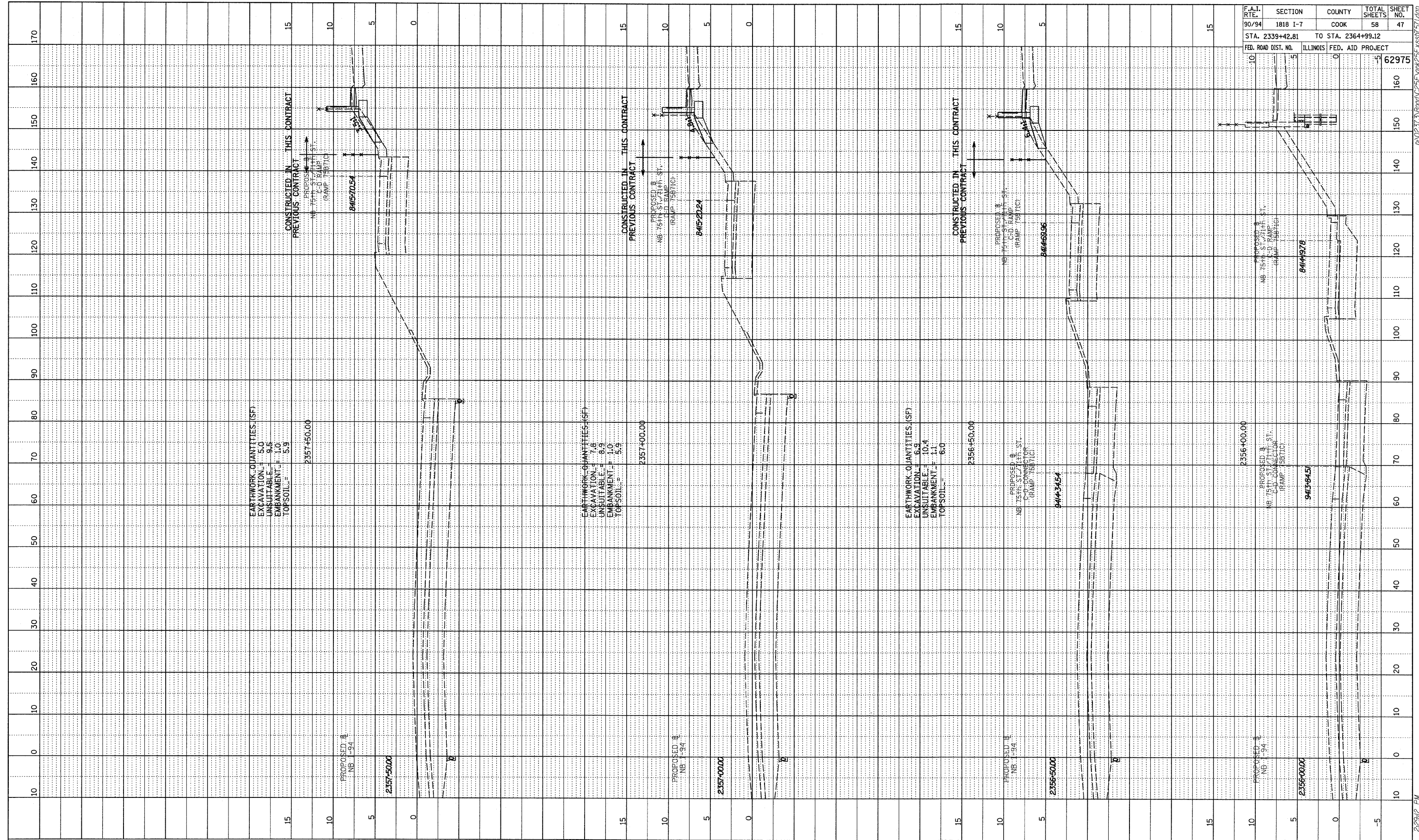
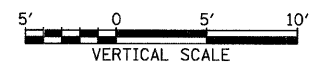
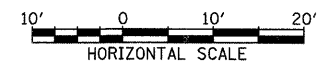


PROFILE SURVEYED BY _____ DATE _____
 DRAFTER _____
 CHECKED _____
 NOTE BOOK NO. _____
 STRUCTURE NOTATION CARD NO. _____



TYLINT INTERNATIONAL



NB I-94 (DAN RYAN EXPRESSWAY)
 STA. 2356+00 TO STA. 2357+50

| F.A.I. RTE. | SECTION | COUNTY | TOTAL SHEETS | SHEET NO. |
|---------------------|---------------------------|--------------------|--------------|-----------|
| 90/94 | 1818 I-7 | COOK | 58 | 47 |
| STA. 2339+42.81 | | TO STA. 2364+99.12 | | |
| FED. ROAD DIST. NO. | ILLINOIS FED. AID PROJECT | | 62975 | |

3/19/2009 2:29:42 PM P:\02313\Road\025\Fig\025F_90M25F_48S17.491