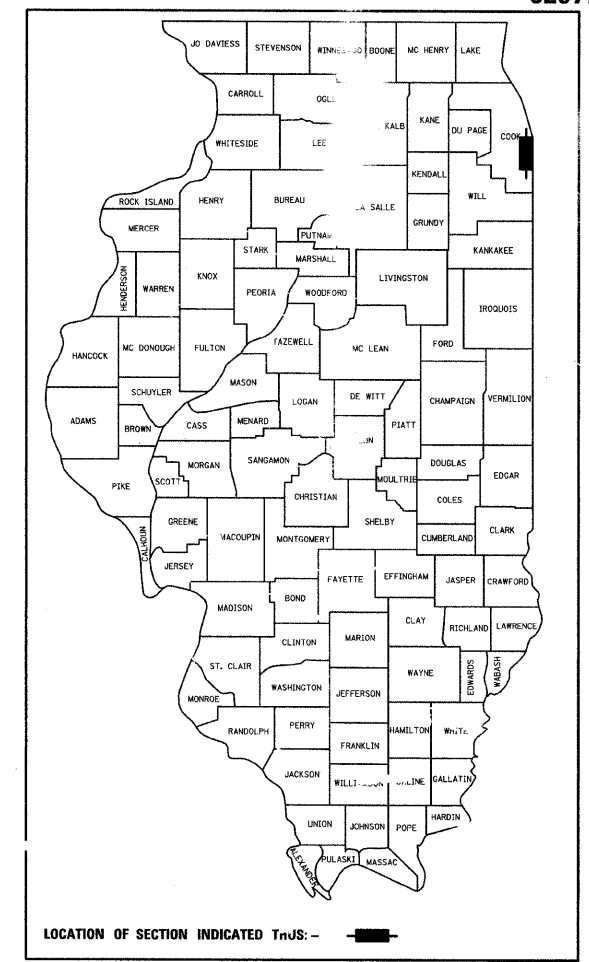


F.A.I. RTE.	SECTION	COUNTY	TOTAL SHEETS	SHEET NO.
94	1516.1-9	COOK	59	1
FED. ROAD DIST. NO.	ILLINOIS FED. AID PROJECT			
D-91-235-05			62977	



STATE OF ILLINOIS
DEPARTMENT OF TRANSPORTATION
DIVISION OF HIGHWAYS

SUBMITTED JANUARY 8, 2009

Diane M. O'Keefe
DEPUTY DIRECTOR OF HIGHWAYS, REGION ENGINEER

June 26, 2009
Charles G. Ingersoll
ENGINEER OF DESIGN AND ENVIRONMENT

June 26, 2009
Christine M. Reed
DIRECTOR OF HIGHWAYS, CHIEF ENGINEER

CONTRACT 26A

Dean A. Klesling
32957 REGISTERED PROFESSIONAL ENGINEER OF ILLINOIS
Signed *Dean A. Klesling, P.E.* Ill. Lic. No. 32957 Expires 11-30-2009.
Date 01-07-09

INDEX OF SHEETS
FOR INDEX OF SHEETS, SEE SHEET NO. 2

DAN RYAN EXPRESSWAY:	ADT (2010)	DESIGN SPEED	POSTED SPEED
SB I-94 (DAN RYAN)	140,500	60 MPH	55 MPH
SB I-57	65,800	60 MPH	55 MPH
SB 95TH STREET EXIT RAMP	11,900	45 MPH	40 MPH
SB WENDELL AVENUE EXIT RAMP	4,800	45 MPH	40 MPH
NB I-57	58,000	60 MPH	55 MPH

MAJOR CROSS STREETS AND FRONTAGE ROADS:	ADT	POSTED SPEED
95TH STREET	23,800	30 MPH
S. LAFAYETTE STREET	6,800	30 MPH

DESCRIPTION OF PROJECT
CONSTRUCTION OF FLUTED KNEE WALLS AND THREE HIGH MAST LIGHT TOWER SERVICE PADS WITH MINI RETAINING WALLS ALONG NB AND SB I-57.

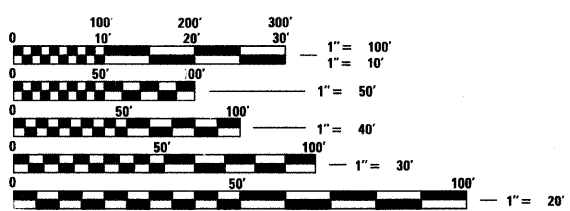
STATE OF ILLINOIS
DEPARTMENT OF TRANSPORTATION
DIVISION OF HIGHWAYS

PROPOSED HIGHWAY PLANS

F.A.I. ROUTE 94 (DAN RYAN EXPRESSWAY)
SECTION (1516.1 I-9)
FLUTED KNEE WALL CONSTRUCTION ALONG LAFAYETTE AVENUE
FROM S. LASALLE STREET TO 95TH STREET
COOK COUNTY
C-91-235-05

~~PROJECT: EOP 091 3(115)063~~

PROJECT LOCATED IN THE CITY OF CHICAGO

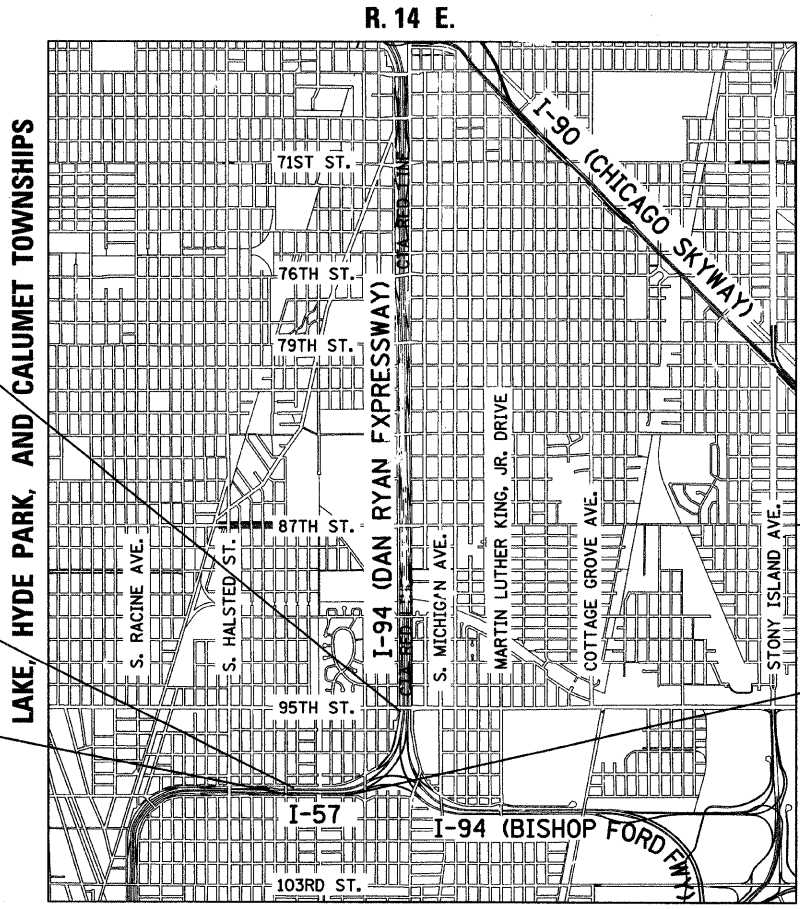


FULL SIZE PLANS HAVE BEEN PREPARED USING STANDARD ENGINEERING SCALES; REDUCED SIZED PLANS WILL NOT CONFORM TO STANDARD SCALES. IN MAKING MEASUREMENTS ON REDUCED PLANS, THE ABOVE SCALES MAY BE USED

DIGGER:
CHICAGO UTILITY ALERT NETWORK
(312) 744-7000

CTA CONTACT:
DAVID HEARD,
MANAGER, CONSTRUCTION
MANAGEMENT OVERSIGHT
(312) 681-3862

CONTRACT NO. 62977



F.A.I. 57 PROJECT LIMIT
STA. 154 + 09.94 (SB I-57)

F.A.I. 57 PROJECT LIMIT
STA. 117 + 38.11 (SB I-57)

F.A.I. 57 PROJECT LIMIT
STA. 218 + 95.72 (NB I-57)

F.A.I. 57 PROJECT LIMIT
STA. 225 + 79.12 (NB I-57)

LOCATION MAP
GROSS LENGTH OF PROJECT = 4355.2 FT. = 0.82 MI.
NET LENGTH OF PROJECT = 4355.2 FT. = 0.82 MI.
MAP SCALE: 1" = 1/2 MILE

DISTRICT ONE DESIGN / PROJECT MANAGER:
BRIAN KUTTAB (847) 705 - 4431