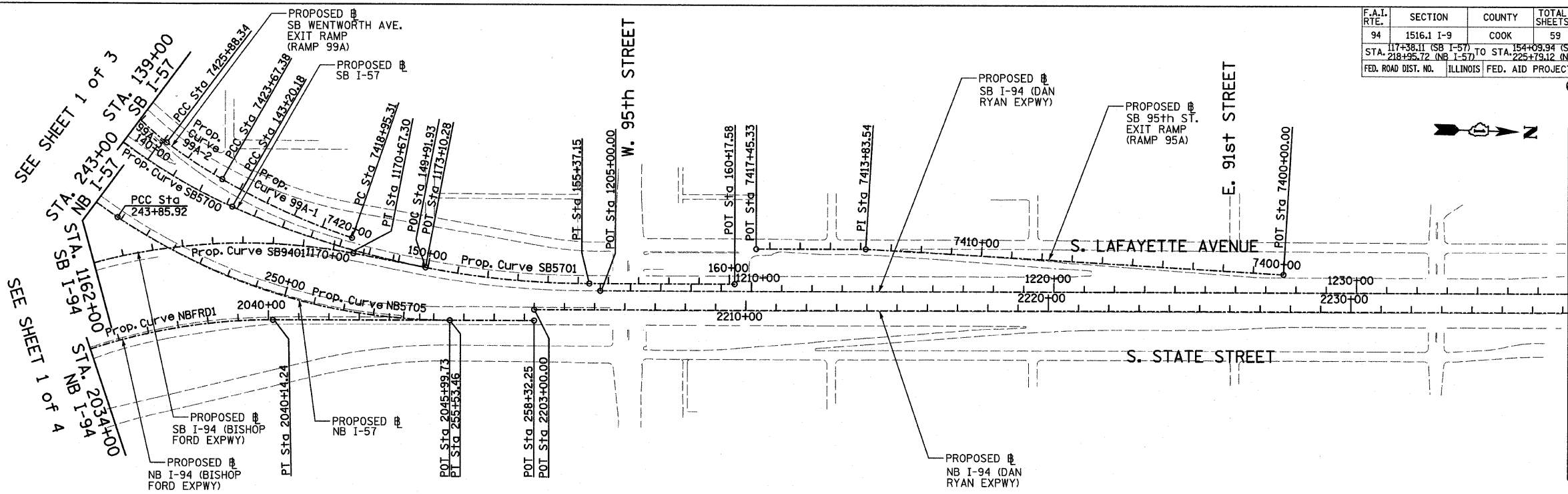
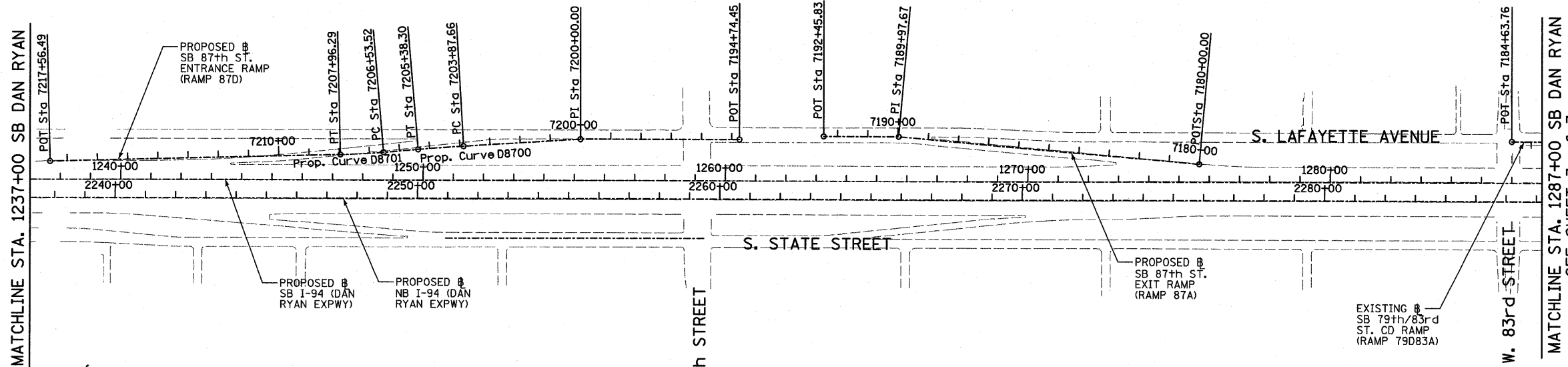


F.A.I. RTE.	SECTION	COUNTY	TOTAL SHEETS	SHEET NO.
94	1516.1 I-9	COOK	59	6
117+38.11 (SB I-57) TO STA. 154+09.94 (SB I-57)				
STA. 218+55.72 (NB I-57) TO STA. 225+79.12 (NB I-57)				
FED. ROAD DIST. NO. ILLINOIS FED. AID PROJECT				

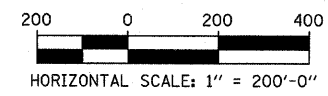
62977



<p><b>Prop. Curve SB5700</b>  P.I. STA = 133+70.06  N = 1,839,521.70  E = 1,177,054.03  Δ = 66° 11' 55.15" (LT)  D = 3° 02' 10.83"  R = 1,887.00  L = 2,180.21  E = 365.53  T = 1,230.09  P.C. STA = 121+39.97  N = 1,839,491.52  E = 1,175,824.31  P.T. STA = 143+20.18  N = 1,840,659.02  E = 1,177,522.68</p>	<p><b>Prop. Curve SB5701</b>  P.I. STA = 149+37.75  N = 1,841,230.00  E = 1,177,757.97  Δ = 24° 02' 07.49" (LT)  D = 1° 58' 30.13"  R = 2,901.00  L = 1,216.96  E = 65.01  T = 617.56  P.C. STA = 143+20.18  N = 1,840,659.02  E = 1,177,522.68  P.T. STA = 155+37.15  N = 1,841,847.31  E = 1,177,740.29</p>	<p><b>Prop. Curve NB5705</b>  P.I. STA = 249+87.51  N = 1,840,788.31  E = 1,177,892.02  Δ = 34° 03' 37.98" (LT)  D = 2° 55' 02.28"  R = 1,964.00  L = 1,167.54  E = 90.07  T = 601.59  P.C. STA = 243+85.92  N = 1,840,280.48  E = 1,177,569.49  P.T. STA = 255+53.46  N = 1,841,389.65  E = 1,177,874.80</p>	<p><b>Prop. Curve SB9401</b>  P.I. STA = 1160+15.97  N = 1,838,783.95  E = 1,177,299.83  Δ = 100° 48' 58.07" (RT)  D = 2° 59' 59.20"  R = 1,910.00  L = 3,360.79  E = 1,086.95  T = 2,309.46  P.C. STA = 1137+06.52  N = 1,838,851.99  E = 1,179,608.28  P.T. STA = 1170+67.30  N = 1,841,064.16  E = 1,177,666.20</p>	<p><b>SB I-94 (DAN RYAN EXPWY)</b>  POT STA = 1205+00.00  N = 1,841,884.04  E = 1,177,763.25</p>	<p><b>SB I-57</b>  POT STA = 160+17.58  N = 1,842,327.55  E = 1,177,726.54</p>	<p><b>SB I-94 (BISHOP FORD EXPWY)</b>  POT STA = 1173+10.28  N = 1,841,304.06  E = 1,177,704.74</p>	<p><b>NB I-57</b>  POT STA = 258+32.25  N = 1,841,668.33  E = 1,177,866.82</p>	<p><b>NB I-94 (BISHOP FORD EXPWY)</b>  POT STA = 2045+99.73  N = 1,841,389.65  E = 1,177,874.80</p>	<p><b>NB I-94 (DAN RYAN EXPWY)</b>  POT STA = 2203+00.00  N = 1,841,667.31  E = 1,177,830.83</p>
--	---	---	--	--	--	---	--	---	--



**TYLIN INTERNATIONAL**



REVISIONS	
NAME	DATE

ILLINOIS DEPARTMENT OF TRANSPORTATION  
**F.A.I. 94 (DAN RYAN EXPRESSWAY)**  
**ALIGNMENT PLAN**  
**SHEET 2 OF 4**  
SCALE: 1"=200'  
DATE: JANUARY 16, 2009  
DRAWN BY: JPM  
CHECKED BY: DAK

1/15/2009 10:55:51 AM