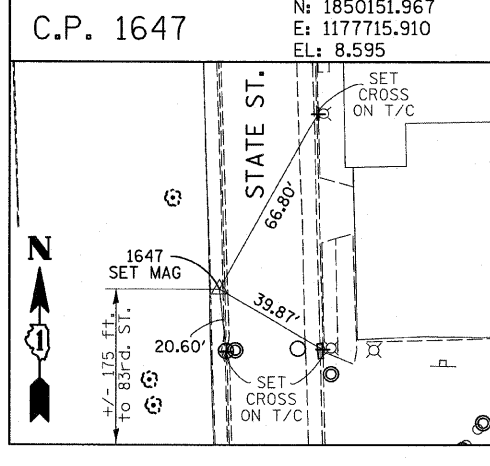
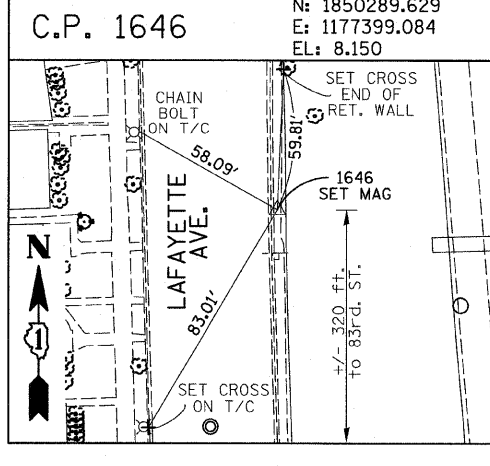
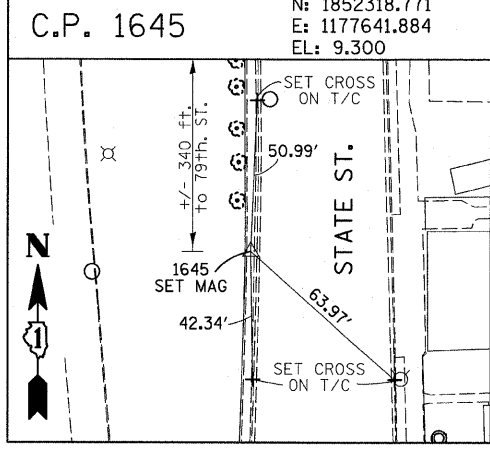
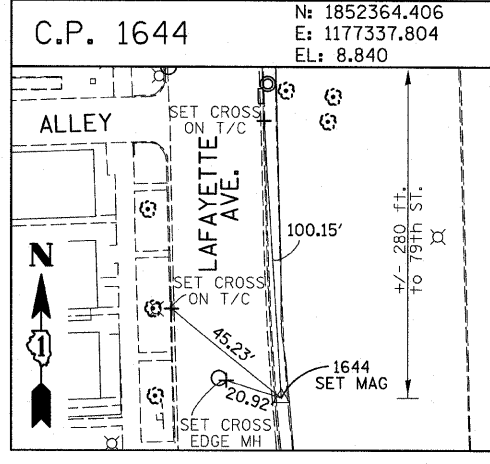
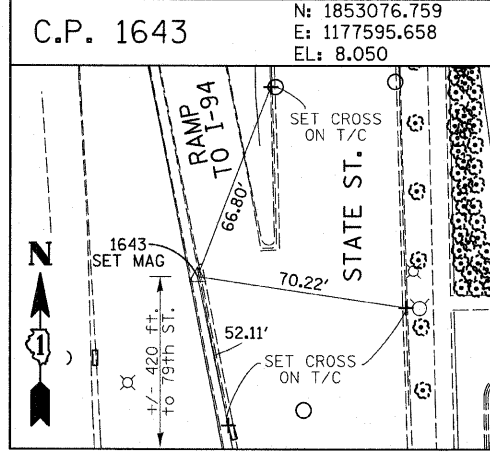
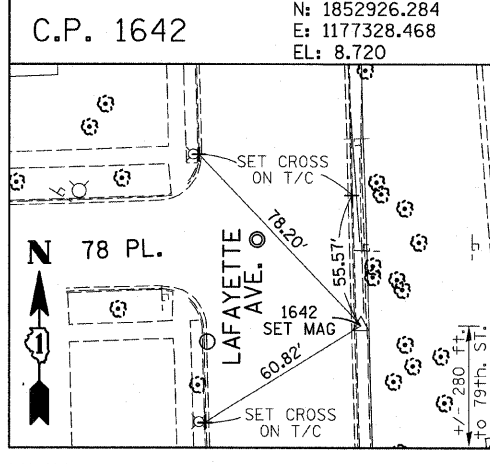
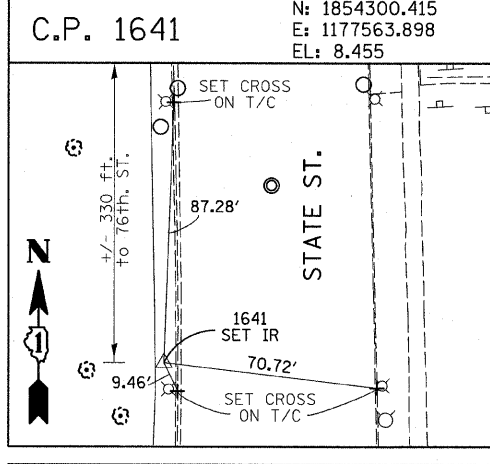
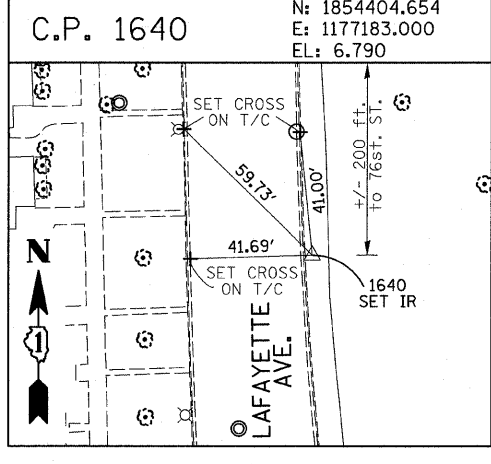
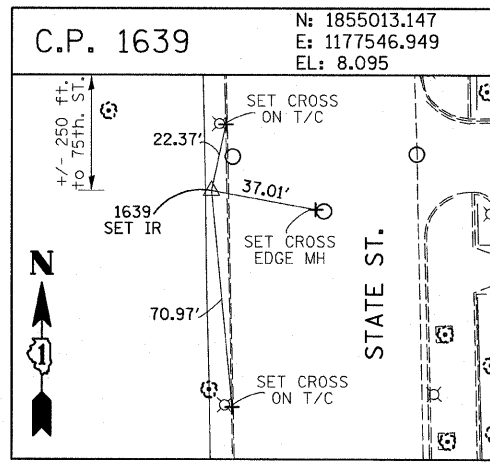
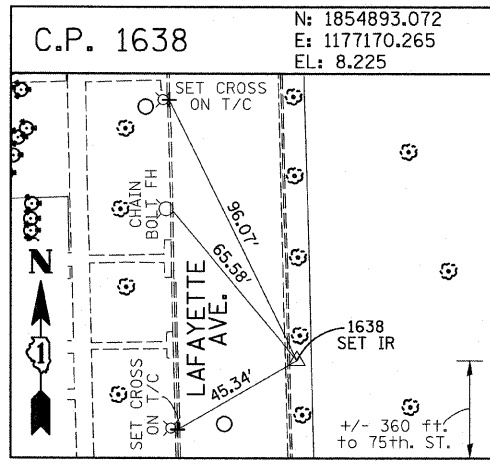
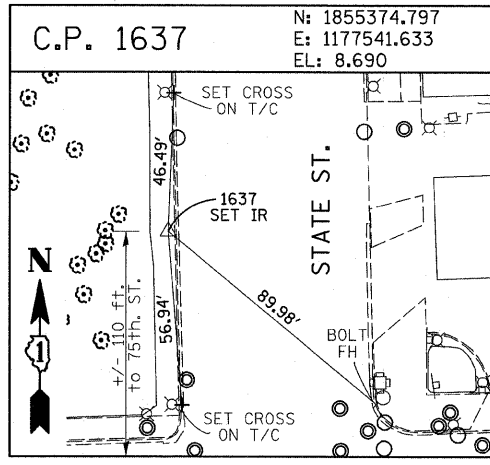
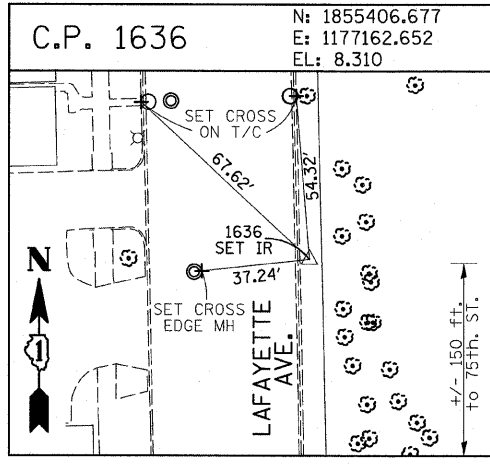
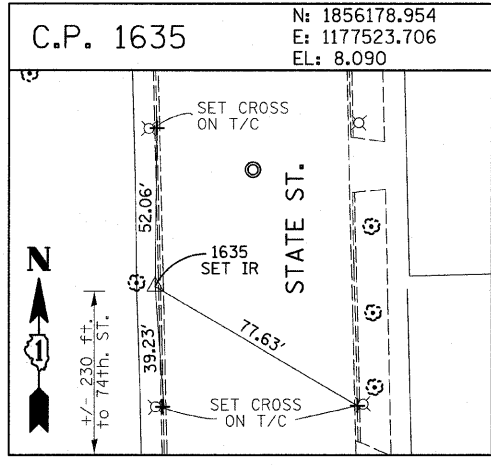
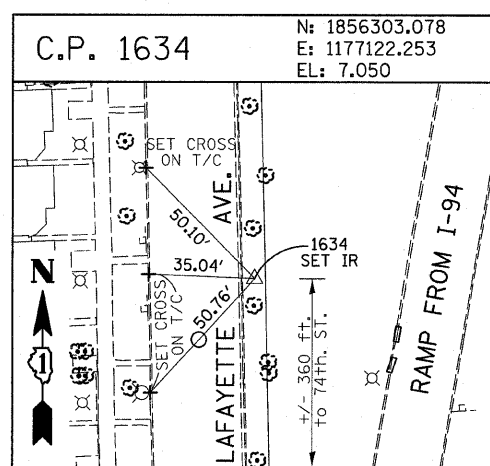
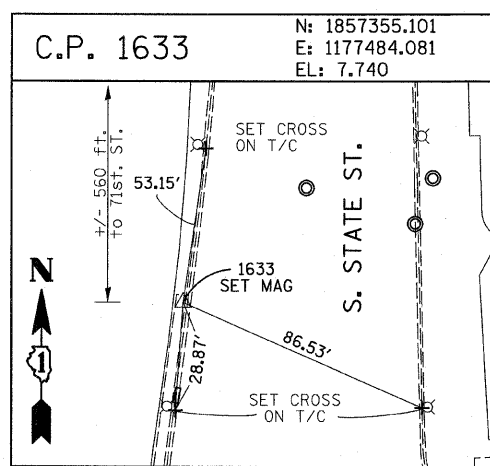
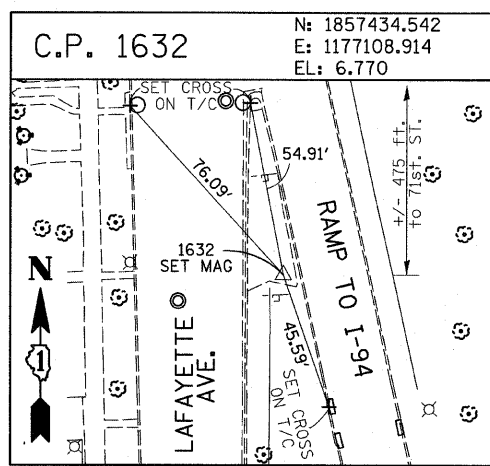
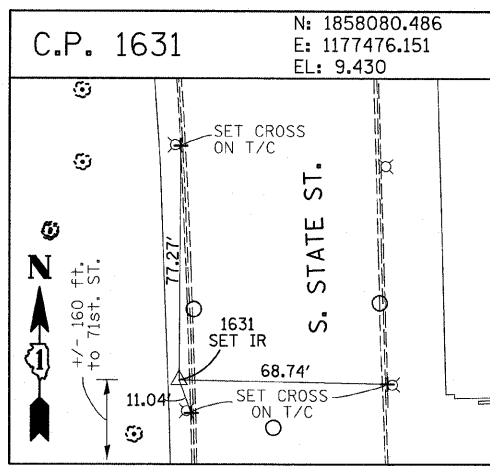
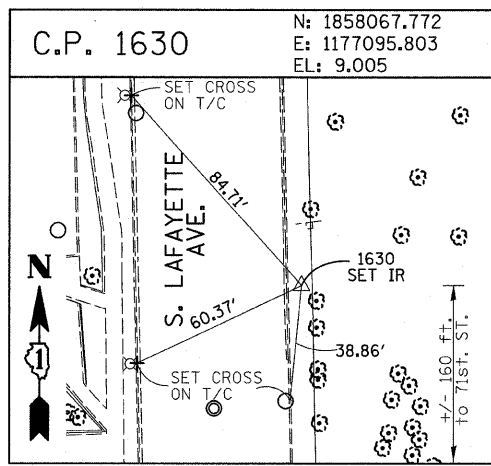


F.A.I. RTE.	SECTION	COUNTY	TOTAL SHEETS	SHEET NO.
94	1516.1 I-9	COOK	59	11
STA. 117+38.11 (SB I-57) TO STA. 154+09.94 (SB I-57)				
STA. 219+35.72 (NB I-57)				
FED. ROAD DIST. NO. ILLINOIS FED. AID PROJECT				

62977



American Surveying Consultants, P.C.
 1157 First St. Suite 1111, Chicago, IL 60602
 312-224-2221

REVISIONS	
NAME	DATE

ILLINOIS DEPARTMENT OF TRANSPORTATION
 F.A.I. 94 (DAN RYAN EXPRESSWAY)
 SURVEY TIES FOR CONTROL POINTS
 SHEET 3 OF 7

SCALE: 1"=30'
 DATE: JANUARY 16, 2009

DRAWN BY: GSP
 CHECKED BY: MMW

1/15/2009 11:40 AM