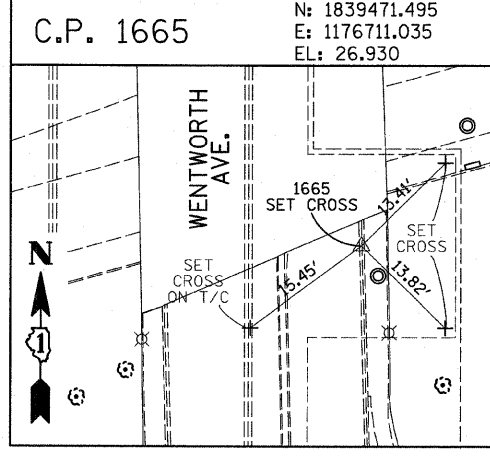
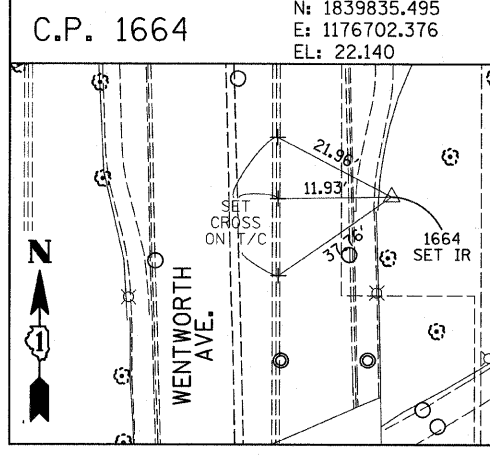
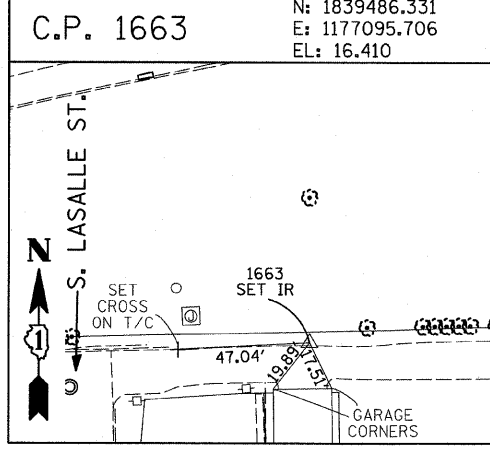
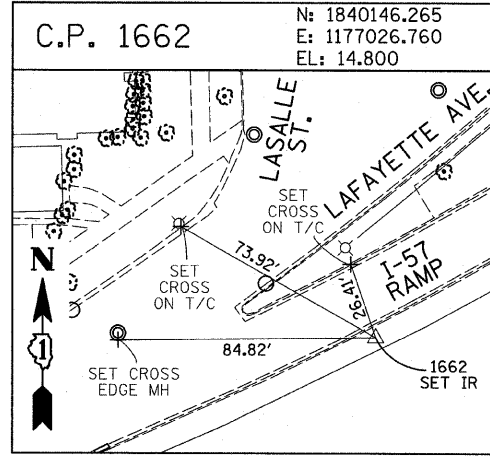
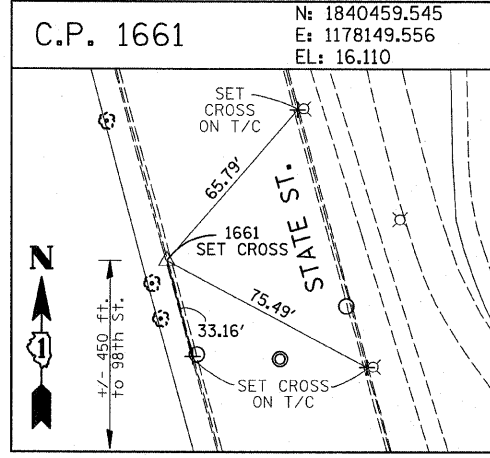
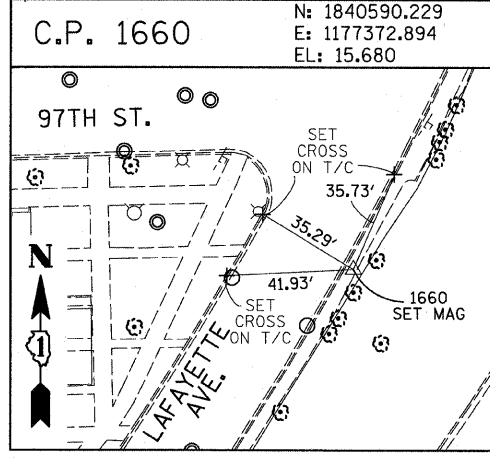
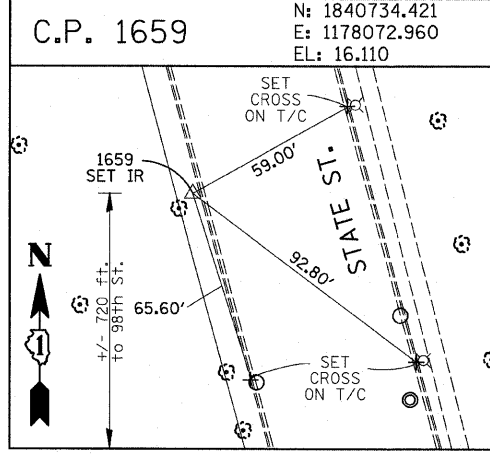
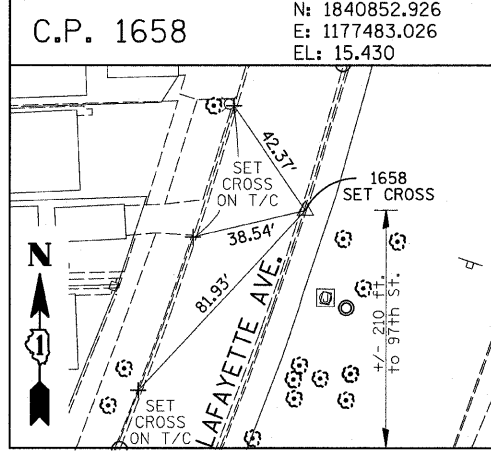
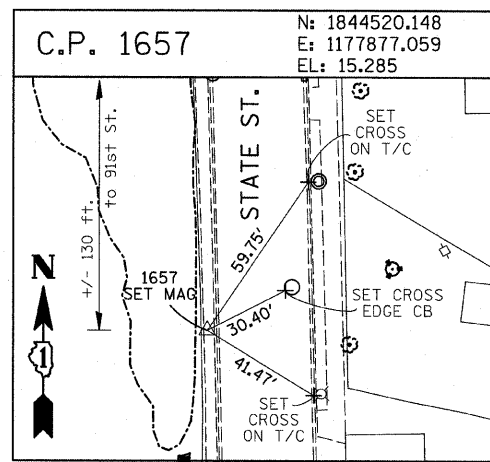
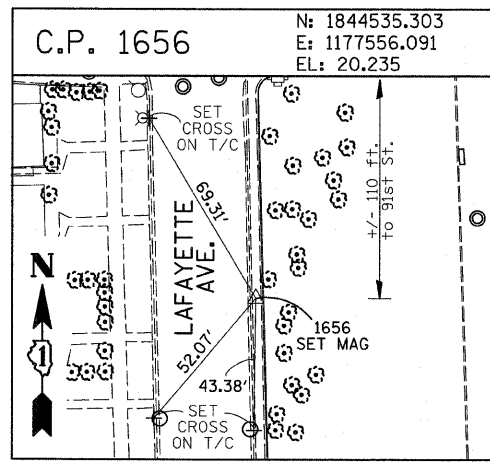
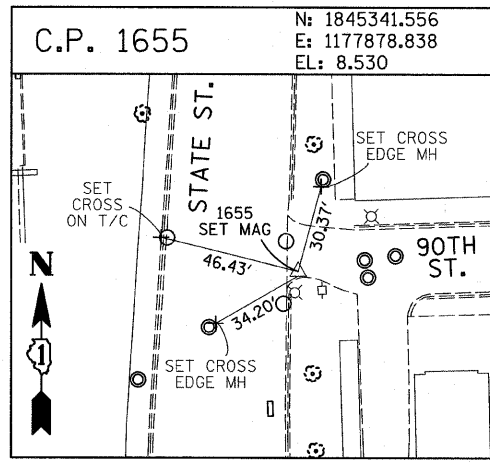
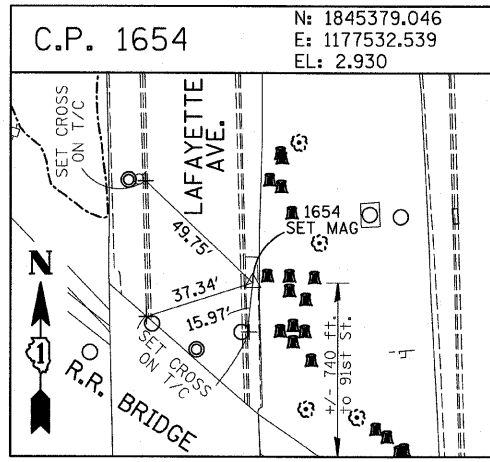
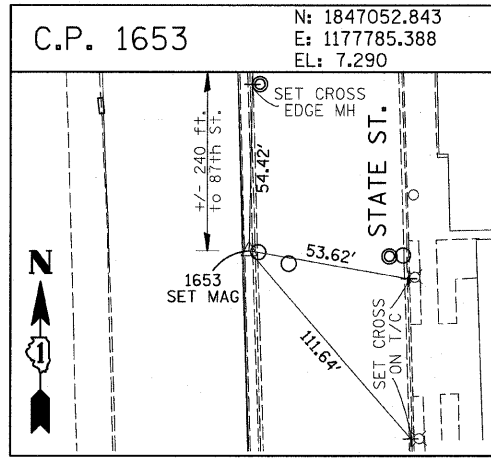
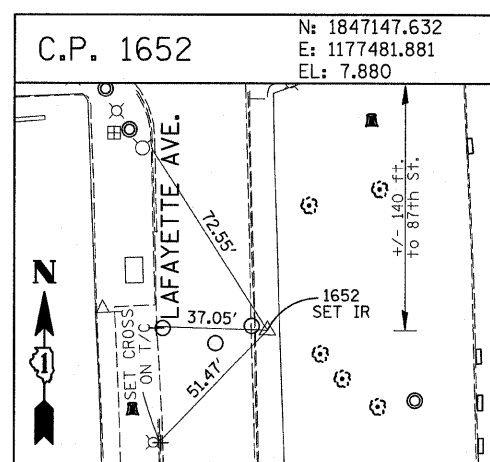
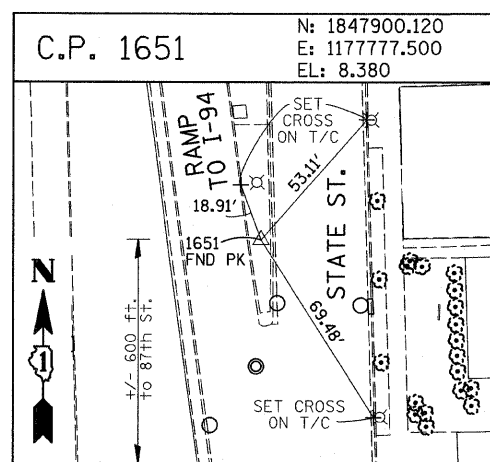
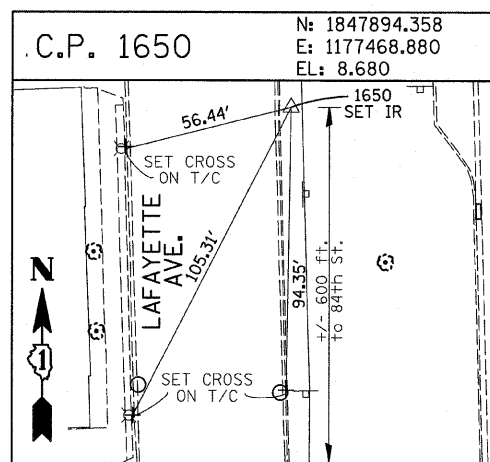
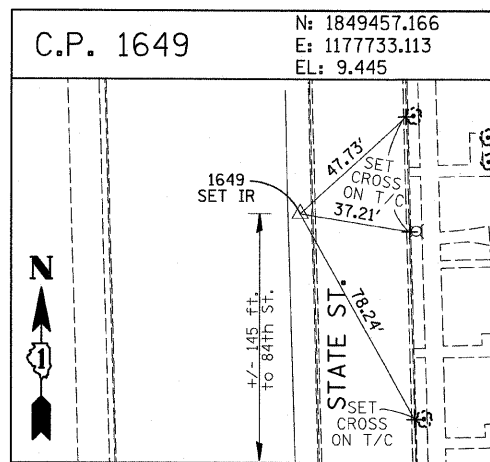
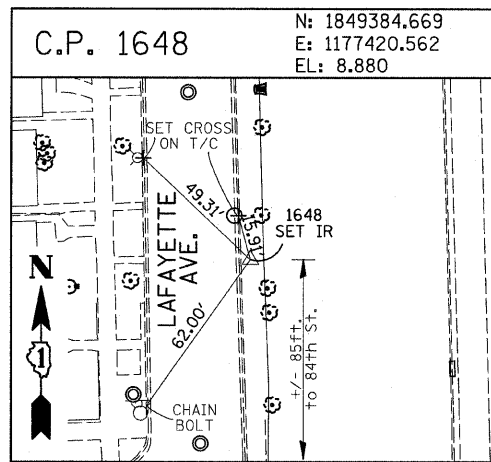


F.A.I. RTE.	SECTION	COUNTY	TOTAL SHEETS	SHEET NO.
94	1516.1 I-9	COOK	59	12
STA. 218+35.72 (NB I-57) TO STA. 154+09.94 (SB I-57)				
FED. ROAD DIST. NO. ILLINOIS FED. AID PROJECT				

62977



American Surveying Consultants, P.C.
 1037 Plank Rd., Ste. 111, Chicago, IL 60641
 773-462-4433

REVISIONS	
NAME	DATE

ILLINOIS DEPARTMENT OF TRANSPORTATION
 F.A.I. 94 (DAN RYAN EXPRESSWAY)
 SURVEY TIES FOR CONTROL POINTS
 SHEET 4 OF 7

SCALE: 1"=30'
 DATE: JANUARY 16, 2009
 DRAWN BY: GSP
 CHECKED BY: MMW

P:\02373\road\260\fig\260s09b.dgn 7/15/2009 11:41:42 AM