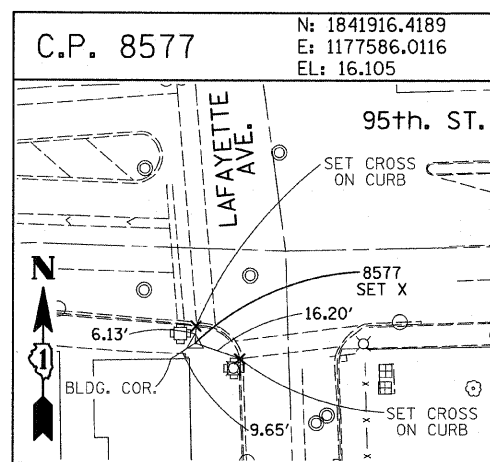
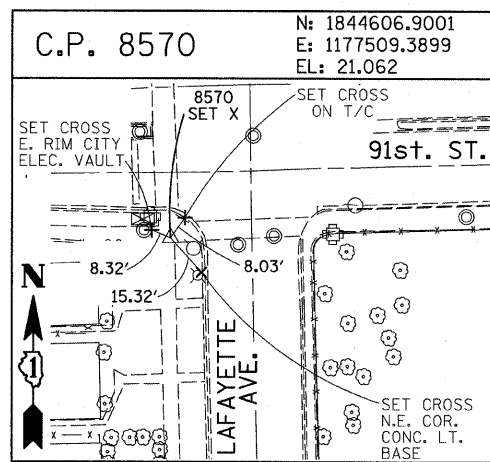
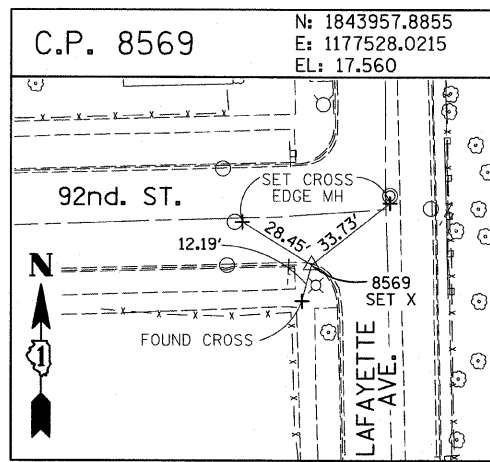
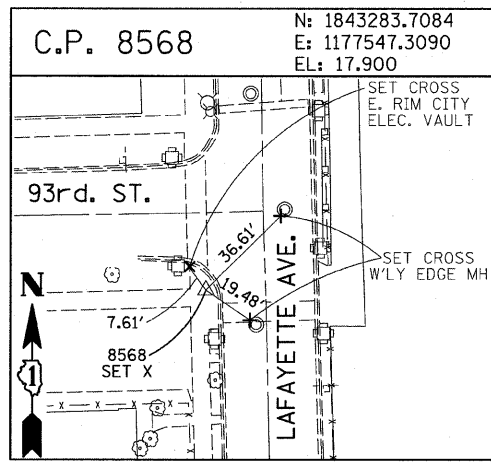
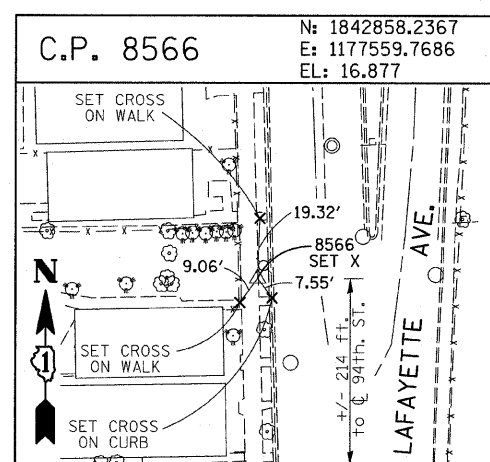
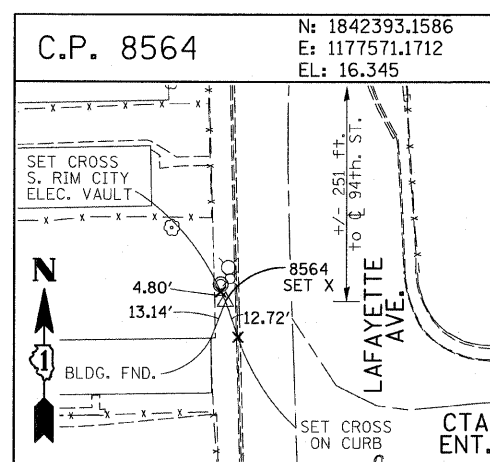
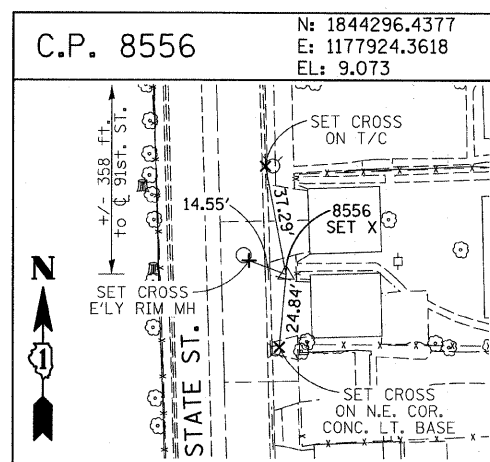
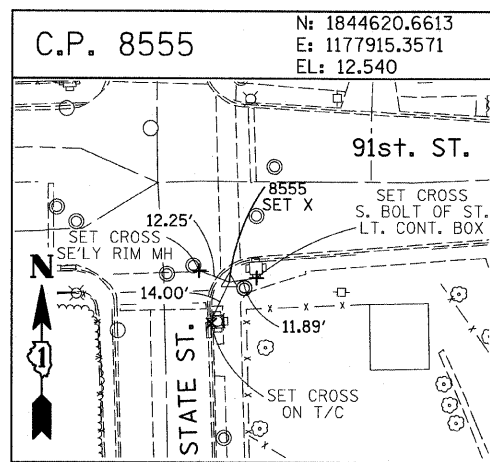
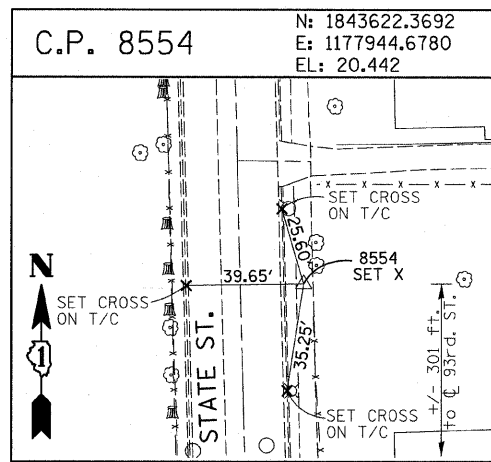


F.A.I. RTE.	SECTION	COUNTY	TOTAL SHEETS	SHEET NO.
94	1516.1 I-9	COOK	59	15
STA. 117+38.11 (SB I-57) TO STA. 154+09.94 (SB I-57)		STA. 218+55.72 (NB I-57) TO STA. 225+79.12 (NB I-57)		
FED. ROAD DIST. NO.		ILLINOIS	FED. AID PROJECT	

62977



PROJECT BENCHMARKS

- BM 101 ELEVATION= 24.89 FEET
SET SQUARE CUT ON SOUTHERLY CURB OF WEST 98TH PLACE, APPROXIMATELY 70 FEET EAST OF THE CENTERLINE OF GREEN STREET.
- BM 102 ELEVATION= 27.36 FEET
SET CROSS ON SOUTHERLY FLANGE BOLT OF FIRE HYDRANT AT THE SOUTHWEST CORNER OF WEST 99TH STREET AND GREEN STREET.
- BM 8558 ELEVATION= 17.73 FEET
SET SQUARE CUT ON SOUTHEAST CORNER OF FOURTH LIGHT BASE SOUTH OF 95TH STREET, ON THE EAST SIDE OF STATE STREET.
- BM 8559 ELEVATION= 17.10 FEET
SET SQUARE CUT ON SOUTHWEST CORNER OF CONCRETE SIGN BASE AT THE NORTHWEST CORNER OF THE MOBIL GAS STATION PROPERTY AT THE NORTHEAST CORNER OF 95TH STREET AND STATE STREET.
- BM 8560 ELEVATION= 17.50 FEET
SET SQUARE CUT ON SOUTHEAST CORNER OF CONCRETE BUS SLAB ON THE EAST SIDE OF STATE STREET, APPROXIMATELY 50 FEET SOUTH OF THE CENTERLINE OF 94TH STREET.
- BM 8561 ELEVATION= 19.77 FEET
SET CROSS ON SOUTHEASTERLY FLANGE BOLT OF FIRST FIRE HYDRANT SOUTH OF 93RD STREET, ON THE EAST SIDE OF STATE STREET.
- BM 8562 ELEVATION= 22.29 FEET
SET CROSS ON SOUTHEASTERLY FLANGE BOLT OF FIRST FIRE HYDRANT NORTH OF 93RD STREET, ON THE EAST SIDE OF STATE STREET.
- BM 8563 ELEVATION= 20.47 FEET
SET CROSS ON SOUTHEASTERLY FLANGE BOLT OF FIRST FIRE HYDRANT SOUTH OF 91ST STREET, ON THE EAST SIDE OF STATE STREET.
- BM 8573 ELEVATION= 19.89 FEET
SET SQUARE CUT ON EAST SIDE OF SIDEWALK OPPOSITE TO THE SECOND FIRE HYDRANT SOUTH OF 91ST STREET, ON THE WEST SIDE OF LAFAYETTE AVENUE.
- BM 8574 ELEVATION= 18.90 FEET
SET CROSS ON THE WESTERLY FLANGE BOLT OF FIRE HYDRANT APPROXIMATELY AT 9224 S. LAFAYETTE AVENUE, ON THE WEST SIDE OF LAFAYETTE AVENUE.
- BM 8575 ELEVATION= 17.77 FEET
SET CROSS ON THE WESTERLY FLANGE BOLT OF FIRE HYDRANT APPROXIMATELY AT 9326 S. LAFAYETTE AVENUE, ON THE WEST SIDE OF LAFAYETTE AVENUE.

- BM 8576 ELEVATION= 17.43 FEET
SET CROSS ON THE WESTERLY FLANGE BOLT OF FIRE HYDRANT AT THE VACANT LOT BETWEEN 9416 AND 9422 S. LAFAYETTE AVENUE, ON THE WEST SIDE OF LAFAYETTE AVENUE.
- BM 8578 ELEVATION= 27.92 FEET
SET CROSS ON SOUTHERLY FLANGE BOLT OF FIRE HYDRANT AT THE NORTHWEST CORNER OF WEST 98TH PLACE AND PEORIA STREET.
- BM 8579 ELEVATION= 28.59 FEET
SET CROSS ON SOUTHERLY FLANGE BOLT OF FIRE HYDRANT AT THE NORTHWEST CORNER OF WEST 98TH PLACE AND SANGAMON STREET.
- BM 8580 ELEVATION= 29.24 FEET
SET CROSS ON SOUTHERLY FLANGE BOLT OF FIRE HYDRANT AT THE NORTHWEST CORNER OF WEST 98TH PLACE AND MORGAN STREET.
- BM 8581 ELEVATION= 30.82 FEET
SET CROSS ON CHAIN BOLT OF FIRE HYDRANT ON THE NORTHWEST CORNER OF CARPENTER STREET AND WEST 98TH PLACE.
- BM 8582 ELEVATION= 30.69 FEET
SET CROSS ON CHAIN BOLT OF FIRST FIRE HYDRANT NORTH OF WEST 98TH PLACE, ON THE EAST SIDE OF ABERDEEN STREET.
- BM 8583 ELEVATION= 33.14 FEET
SET SQUARE CUT ON CONCRETE BRIDGE WALL AT THE SOUTHEASTERLY CORNER OF GENOA AVENUE AND 99TH STREET.
- BM 8584 ELEVATION= 32.36 FEET
SET CROSS ON CHAIN BOLT OF FIRST FIRE HYDRANT WEST OF ABERDEEN STREET, ON THE SOUTHERLY SIDE OF 99TH STREET.
- BM 8585 ELEVATION= 30.28 FEET
SET CROSS ON SOUTHERLY FLANGE BOLT OF FIRST FIRE HYDRANT WEST OF MORGAN STREET, ON THE SOUTH SIDE OF 99TH STREET.
- BM 8586 ELEVATION= 28.75 FEET
SET CROSS ON NORTHERLY FLANGE BOLT OF FIRE HYDRANT AT THE SOUTHWEST CORNER OF 99TH STREET AND SANGAMON STREET.
- BM 8587 ELEVATION= 31.19 FEET
SET CROSS ON SOUTHERLY FLANGE BOLT OF FIRE HYDRANT AT THE SOUTHWEST CORNER OF 99TH STREET AND CARPENTER STREET.

- BM 3514 ELEVATION= 17.56 FEET
SET CROSS ON CHAIN BOLT OF HYDRANT AT SOUTHWEST INTERSECTION OF LASALLE ST. AND 97TH ST.
- BM 3522 ELEVATION= 18.06 FEET
SET CROSS ON SOUTH SOUTHEAST FLANGE BOLT OF HYDRANT ± HALFWAY BETWEEN NORTH AND SOUTH ENTRANCE TO CITGO, EAST SIDE OF STATE ST. AND NORTH OF 95TH ST.
- BM 3549 ELEVATION= 9.49 FEET
SET CROSS WESTERLY FLANGE BOLT OF HYDRANT AT SOUTHWEST INTERSECTION OF 87TH ST. AND LAFAYETTE AVE.
- BM 3550 ELEVATION= 22.88 FEET
SET CROSS WESTERLY FLANGE BOLT OF HYDRANT AT SOUTHWEST INTERSECTION OF 91ST ST. AND LAFAYETTE AVE.
- BM 3551 ELEVATION= 17.50 FEET
SET CROSS NORTHERLY FLANGE BOLT OF HYDRANT AT SOUTHWEST INTERSECTION OF 95TH ST. AND LAFAYETTE AVE.
- BM 3552 ELEVATION= 14.81 FEET
SET CROSS NORTHEAST BOLT OF TRAFFIC SIGNAL/LIGHT BASE AT SOUTHEAST INTERSECTION OF 91ST ST. AND STATE ST.
- BM 3553 ELEVATION= 8.47 FEET
SET CROSS NORTHWEST BOLT OF TRAFFIC SIGNAL/LIGHT BASE AT NORTHEAST INTERSECTION OF 87TH ST. AND STATE ST.
- BM 3556 ELEVATION= 9.06 FEET
SET CROSS EASTERLY FLANGE BOLT OF HYDRANT AT NORTHEAST CORNER OF 75TH ST. AND STATE ST.
- BM 3558 ELEVATION= 18.15 FEET
SET CROSS SOUTHWESTERLY FLANGE BOLT OF HYDRANT AT NORTHWEST INTERSECTION OF NORMAL ST. AND 98TH PLACE.
- BM 3810 ELEVATION= 0.29 FEET
CUT SQUARE ON SOUTHERLY CORNER OF METAL BASE FOR OVERHEAD SIGN, ON THE WESTERLY SIDE OF SOUTHBOUND DAN RYAN, OPPOSITE OF WEST 77TH PLACE, APPROXIMATELY 1000 FEET NORTH OF 79TH STREET BRIDGE.
- BM 3811 ELEVATION= 1.95 FEET
CUT SQUARE ON SOUTHEASTERLY CORNER OF METAL BASE FOR OVERHEAD SIGN, ON THE WESTERLY SIDE OF SOUTHBOUND DAN RYAN APPROXIMATELY 840 FEET SOUTHERLY OF 83RD STREET.

REVISIONS	
NAME	DATE

ILLINOIS DEPARTMENT OF TRANSPORTATION
F.A.I. 94 (DAN RYAN EXPRESSWAY)
 SURVEY TIES FOR CONTROL POINTS
 SHEET 7 OF 7

SCALE: 1"=30'
 DATE: JANUARY 16, 2009
 DRAWN BY: GSP
 CHECKED BY: MMW