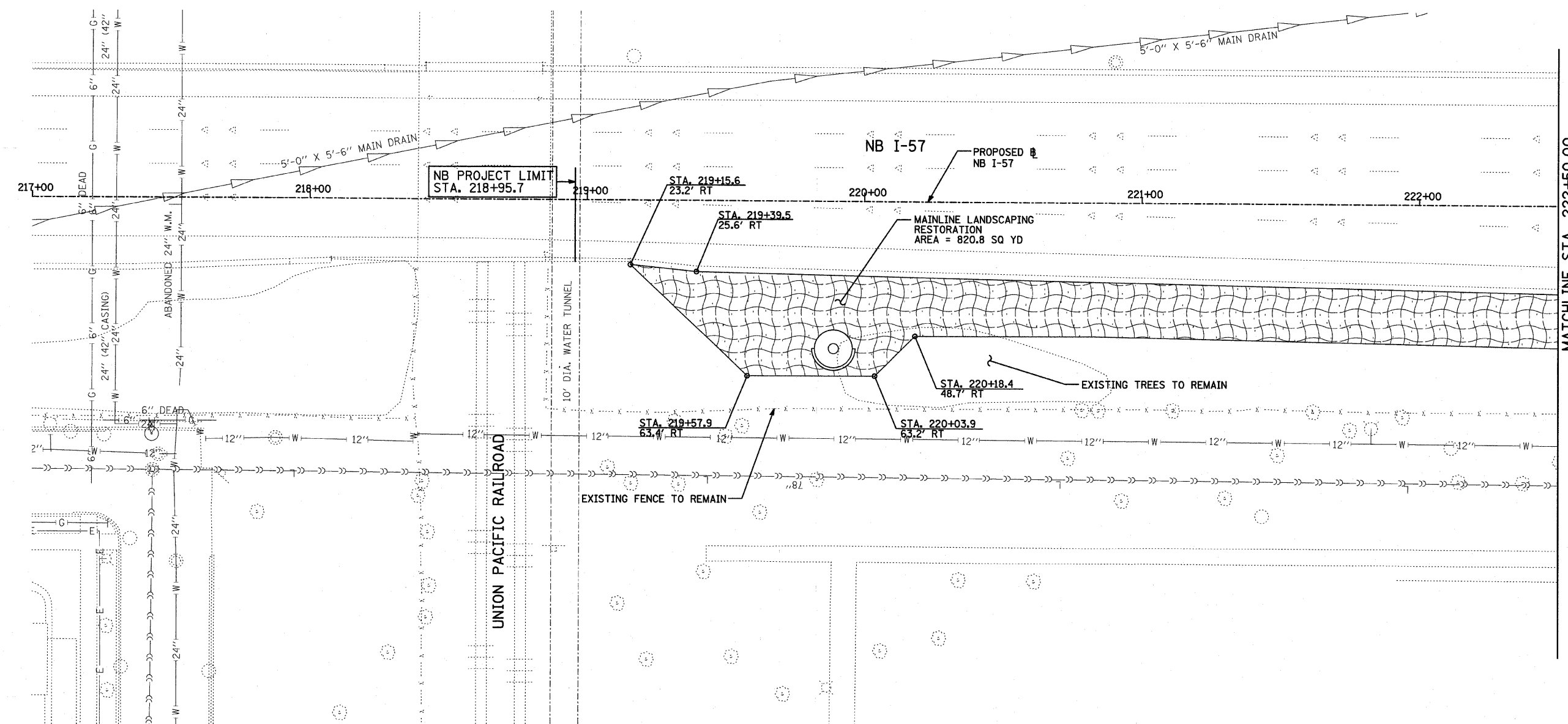


F.A.I. RTE.	SECTION	COUNTY	TOTAL SHEETS	SHEET NO.
94	1516.1 I-9	COOK	59	19
STA. 117+38.11 (SB I-57) TO STA. 154+09.94 (SB I-57)				
STA. 218+95.72 (NB I-57)				
FED. ROAD DIST. NO. ILLINOIS FED. AID PROJECT				

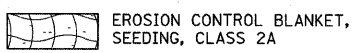
62977



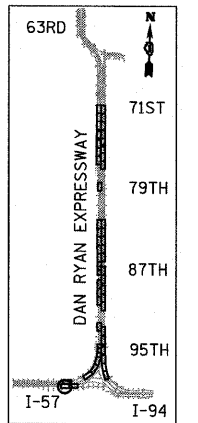
LANDSCAPING GENERAL PLAN NOTES:

1. THE CONTRACTOR SHALL USE CARE IN GRADING OR EXCAVATING NEAR ANY AND ALL EXISTING ITEMS WHICH WILL NOT BE REMOVED. ANY DAMAGE DONE TO EXISTING ITEMS BY THE CONTRACTOR SHALL BE REPAIRED BY THE CONTRACTOR AT THE CONTRACTOR'S EXPENSE.
2. THE SEEDING DATES FOR BARE EARTH SEEDING OF MIXTURE CLASS 2A SHALL BE FROM APRIL 1 TO JUNE 1 AND FROM AUGUST 15 TO SEPTEMBER 30. ALL SEEDING NOT SOWN ACCORDING TO THE SPECIFIED SEASONAL DATE SHALL REQUIRE PRIOR APPROVAL FROM THE ENGINEER. FAILURE TO SECURE SUCH APPROVAL SHALL RESULT IN THE REJECTION OF THE SEEDING AND REPLACEMENT BY THE CONTRACTOR AS HIS/HER EXPENSE.
3. AREAS TO BE SEEDD BETWEEN NOVEMBER 1 AND APRIL 1 SHALL REQUIRE DORMANT SEEDING, WHICH SHALL BE INCLUDED IN THE COST OF SEEDING CLASS 2A.
4. THE SEEDING DATES FOR BARE EARTH SEEDING OF MIXTURE CLASSES 4, 4A (MODIFIED), 5, AND 5(A) MODIFIED SHALL BE FROM APRIL 15 TO JUNE 30 AND FROM OCTOBER 15 TO DECEMBER 1. ALL SEEDING NOT SOWN ACCORDING TO THE SPECIFIED SEASONAL DATE SHALL REQUIRE PRIOR APPROVAL FROM THE ENGINEER. FAILURE TO SECURE SUCH APPROVAL SHALL RESULT IN THE REJECTION OF THE SEEDING AND REPLACEMENT BY THE CONTRACTOR AT HIS/HER EXPENSE.
5. THE CONTRACTOR SHALL TAKE ALL NECESSARY PRECAUTIONS FOR THE PROTECTION OF EXISTING PLANT MATERIAL FOR WHICH THE CONTRACT DOES NOT PROVIDE REMOVAL. THE PROTECTION OF EXISTING PLANT MATERIAL AND THE REPAIR OR REPLACEMENT OF EXISTING PLANT MATERIAL DAMAGED BY THE CONTRACTOR SHALL BE DONE IN ACCORDANCE WITH THE REQUIREMENTS OF SECTION 201 OF THE STANDARD SPECIFICATIONS.
6. LAYOUT OF LANDSCAPED AREAS WILL REQUIRE APPROVAL OF THE ENGINEER PRIOR TO TOPSOIL PLACEMENT, SEEDING, AND PLANTING.
7. THE CONTRACTOR SHALL PROTECT AND USE CAUTION DURING CONSTRUCTION OPERATIONS AROUND ALL EXISTING UTILITY FACILITIES.

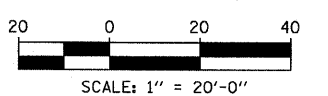
LEGEND:



* ADDITIONAL QUANTITIES FOR TOPSOIL FURNISH AND PLACE 12" AND COMPOST FURNISH AND PLACE, 6" HAVE BEEN PROVIDED FOR THE AREA AROUND THE HMLT SERVICE PAD. A RADIUS OF 20 FT FROM THE EDGE OF THE SERVICE PAD WAS USED TO CALCULATE THIS ADDITIONAL QUANTITY.



LOCATION MAP



SCALE: 1" = 20'-0"

REVISIONS	
NAME	DATE

ILLINOIS DEPARTMENT OF TRANSPORTATION
 F.A.I. 94 (DAN RYAN EXPRESSWAY)
LANDSCAPING PLAN
 HMLT 6AMN2
 NB I-57
 STA. 217+00.00 TO STA. 222+50.00

SCALE: 1"=20'
 DATE: JANUARY 16, 2009

DRAWN BY: AMB
 CHECKED BY: TGB, MI

TYLIN INTERNATIONAL

1/15/2009 10:44:36 AM