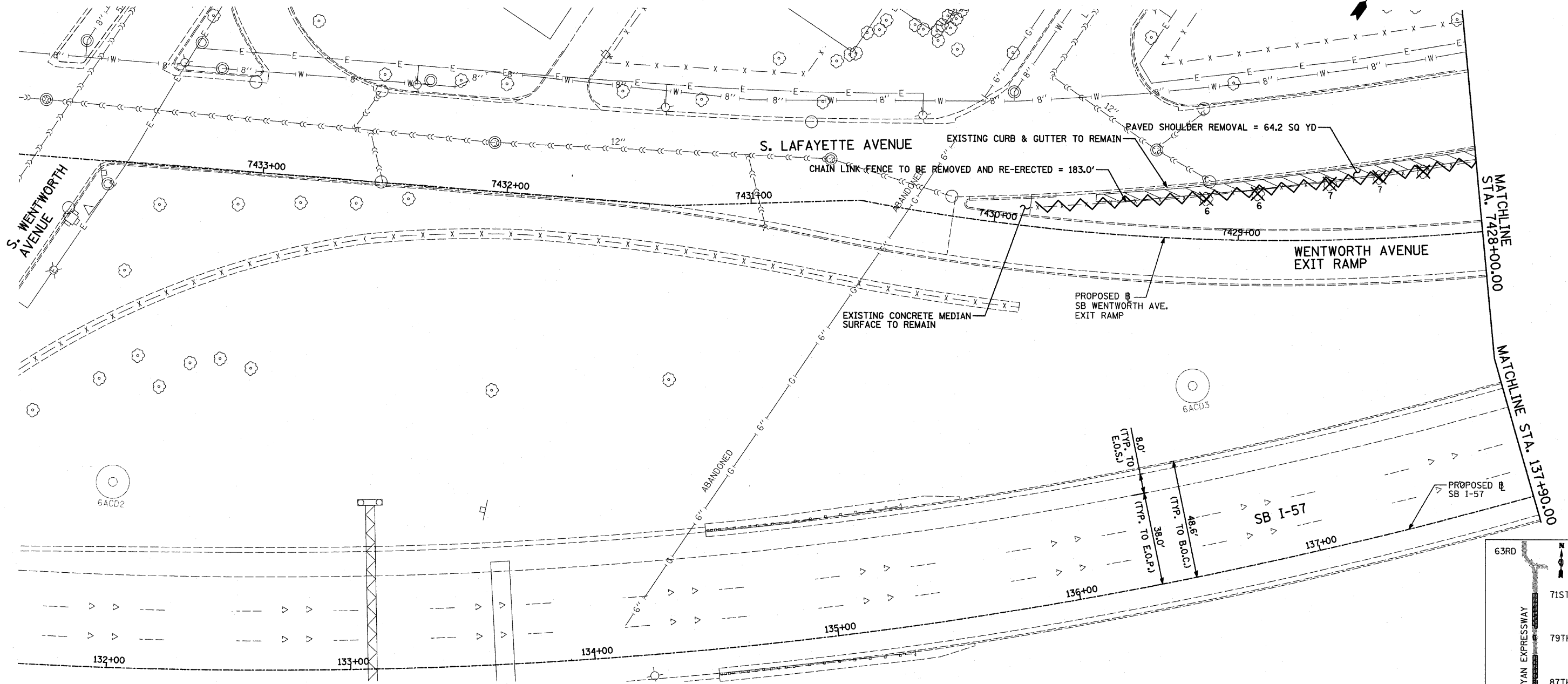


F.A.I. RTE.	SECTION	COUNTY	TOTAL SHEETS	SHEET NO.
94	1516.1 I-9	COOK	59	22
STA. 117+36.11 (SB I-57) TO STA. 154+09.94 (SB I-57)				
STA. 218+55.72 (NB I-57) TO STA. 225+79.12 (NB I-57)				
FED. ROAD DIST. NO. ILLINOIS FED. AID PROJECT				

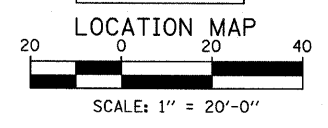
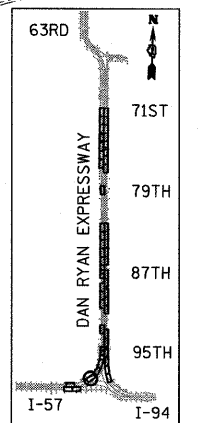
62977



**LEGEND:**

	PAVED SHOULDER REMOVAL
	CHAIN LINK FENCE REMOVAL
	CONCRETE BARRIER/GUARDRAIL REMOVAL
	TREE REMOVAL (UNITS) (NO UNIT SHOWN = <6)

**NOTE:**  
 SIGNS SHALL BE RELOCATED AT A MINIMUM OF 3 FEET FROM THE FRONT FACE OF THE PROPOSED KNEE WALL. EXACT PLACEMENT SHALL BE DETERMINED BY THE ENGINEER. PAID FOR AS "RELOCATE EXISTING SIGN PANEL, SPECIAL".



REVISIONS	
NAME	DATE

ILLINOIS DEPARTMENT OF TRANSPORTATION  
 F.A.I. 94 (DAN RYAN EXPRESSWAY)  
 REMOVAL PLAN  
 SB I-57  
 STA. 131+63.00 TO STA. 137+90.00

SCALE: 1"=20'  
 DATE: JANUARY 16, 2009

DRAWN BY: AMB, MAF  
 CHECKED BY: TGB, MI

**TYLIN** INTERNATIONAL

7/15/2009 10:56:02 AM